

10&11-4 10&11-4-00023
33, 34, 3, 4

COUNTY SURVEY #146

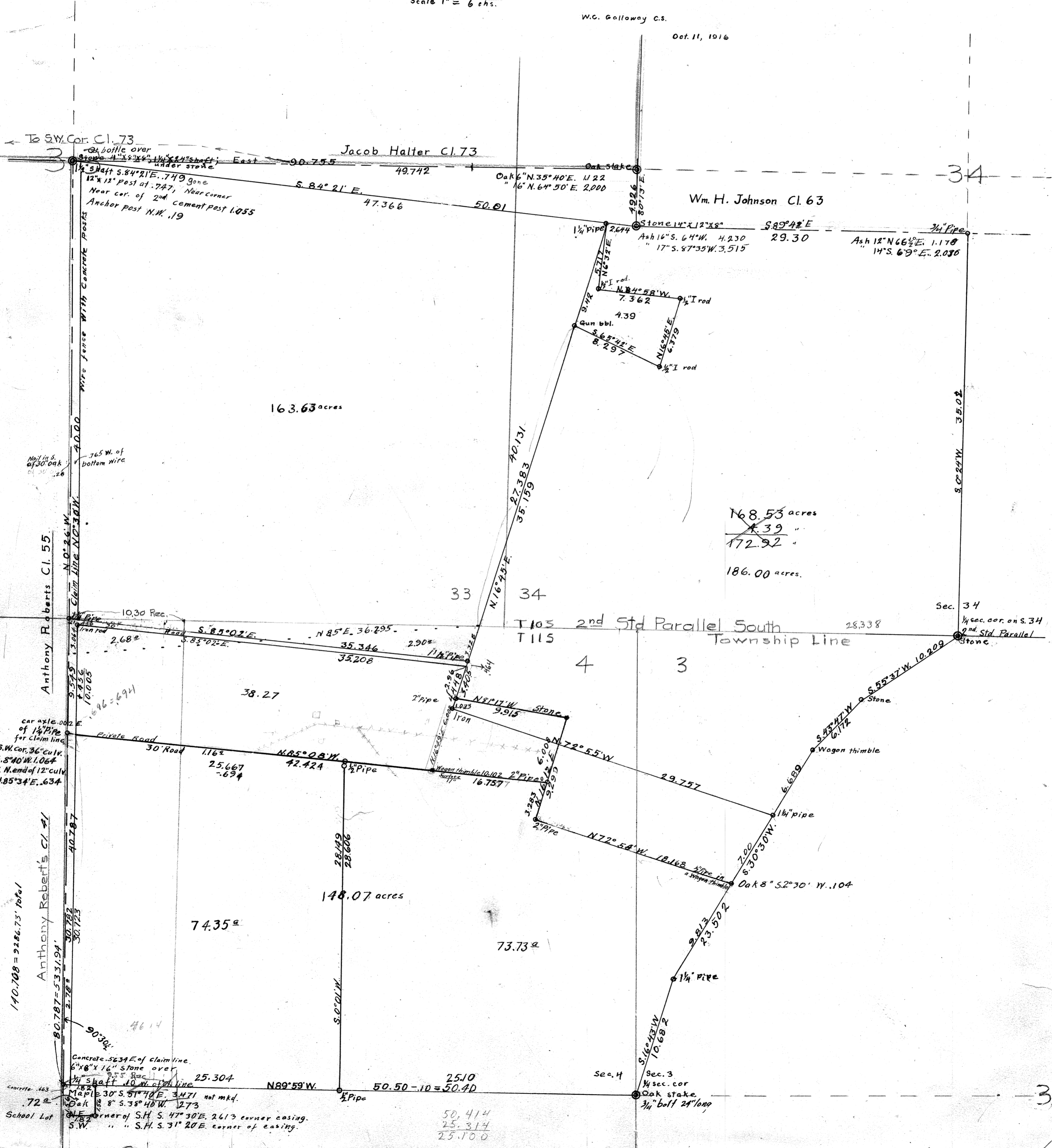
For Wm. Abraham Heirs.

Tps. 10+11 S. R. 4 W. W. M.

Scale 1" = 6 chs.

W.C. Galloway C.S.

Oct. 11, 1916



163.63 acres

168.53 acres
~~4.39~~
172.92
186.00 acres.

148.07 acres

74.35^a

73.73^a

50.414
25.314
25.100

To SW. Cor. C1.73
at bottle over
Stone 4" x 6" x 6" 1 1/2" x 1 1/2" shaft
under stone

5" shaft 5.84° 21' E. 7.49
12" x 12" post at .747, Near corner
Near cor. of 2nd cement post 1.055
Anchor post N.W. .19

Nail in S. of 30' oak
765 W. of
bottom wire

car axle .002 E.
of 1 1/2" pipe
for claim line
S.W. cor. 36" culv.
S. 8° 40' W. 1.064
& N. end of 12" culv.
N. 85° 34' E. .634

140.788 = 2286.73' 10661
Anthony Robert's C1.41
80.787 = 5331.94'
2.783
90° 30'
Concrete .5634 E. of claim line.
6" x 6" x 16" stone over
3.55 Rec
1/4" shaft 10 W. of claim line
25.304
Maple 30" S. 51° 10' E. 3.471 not mkd.
72^a Oak 8" S. 38° 40' W. 2.73
S.W. corner of S.H. S. 47° 30' E. 2613 corner casing.
S.W. " " S.H. S. 31° 20' E. corner of casing.

Concrete .463
72^a Oak 8" S. 38° 40' W. 2.73
S.W. corner of S.H. S. 47° 30' E. 2613 corner casing.
S.W. " " S.H. S. 31° 20' E. corner of casing.

Concrete .463
72^a Oak 8" S. 38° 40' W. 2.73
S.W. corner of S.H. S. 47° 30' E. 2613 corner casing.
S.W. " " S.H. S. 31° 20' E. corner of casing.

Concrete .463
72^a Oak 8" S. 38° 40' W. 2.73
S.W. corner of S.H. S. 47° 30' E. 2613 corner casing.
S.W. " " S.H. S. 31° 20' E. corner of casing.

Concrete .463
72^a Oak 8" S. 38° 40' W. 2.73
S.W. corner of S.H. S. 47° 30' E. 2613 corner casing.
S.W. " " S.H. S. 31° 20' E. corner of casing.