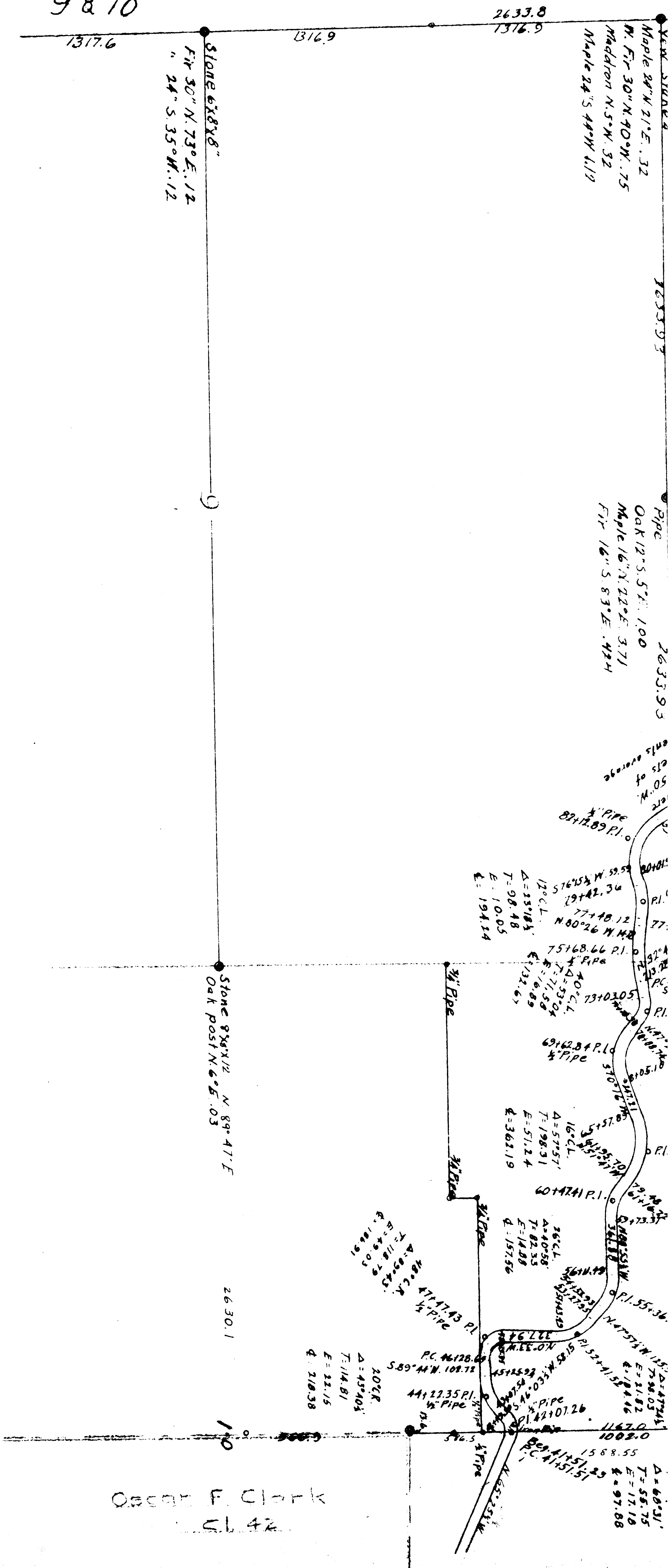


11-5

9 & 10

00006

1" = 500'



NEW STAKE 4
 Maple 24" N. 21° E. .32
 W. Fir 30" N. 40° W. .75
 Madron N. 5° W. .32
 Maple 24" S. 44° W. .19

Stone 6x8x8"
 Fir 30" N. 73° E. .12
 " 24" S. 35° W. .12

Pipe
 Oak 12" S. 5° E. 1.00
 Maple 16" N. 22° E. 3.71
 Fir 16" S. 83° E. .424

12° C.L.
 Δ = 35° 18' 3"
 T = 98.48
 E = 10.05
 Δ = 194.14

40° C.L.
 Δ = 53° 04'
 T = 71.58
 E = 16.89
 Δ = 132.65

16° C.L.
 Δ = 57° 57'
 T = 198.31
 E = 51.24
 Δ = 362.19

26° C.L.
 Δ = 40° 58'
 T = 82.33
 E = 14.88
 Δ = 157.56

20° C.L.
 Δ = 45° 40'
 T = 114.81
 E = 22.15
 Δ = 218.38

Δ = 60° 31'
 T = 56.75
 E = 17.18
 Δ = 97.88

Oscar F. Clark
 S. L. 42