

11-5
23

00012

C.S. 105

Scale: 1" = 6 chains
W. C. Galloway C.S.

Slope 6x10x16
Oak 24" 552.30 E 252.514
24" S 31°30' W 2.95 dead
20" S 11°20' W .769

107.539

15
14
1/2" Pipe
Oak 10" N 22° E 110
23 355 342
23 355 342

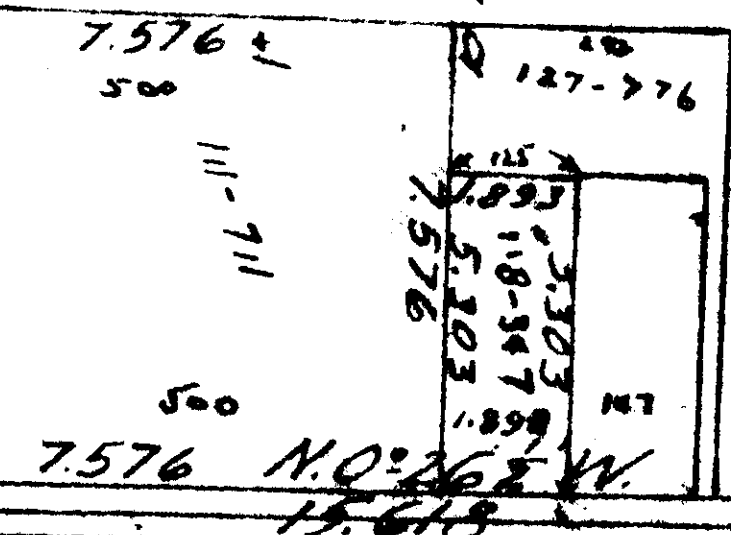
S. M
C 148
Stouts
N 0° 26' E. 40.024
7.50c car
9" Wheel 8" long
and both

John Robinson D.L.C. #44

16.145 N 0° 27' E
JENCA

111-492

5049
1/2" 60ft in
1/2" Pipe
16.939
1" Pipe



N 89° 37' W
16.687

1/2" Pipe
1/2" Pipe
1/2" Pipe

E 26.00
Oak 3" S 84° 13' E. 295

Oak 4" N 85° 36' W 5.49
6.5 1237 W 359

Hemmon C. Lewis C147

County Road 273
14.598

4.849
1/2" Pipe N 89° 37' W
12.244
O.H. Meyer 9/11/16
R.O.F. #2152
1/2" Pipe S 89° 37' E
12.242
1/2" Pipe
N 0° 16' E
4.849

25.697 road side
25.540
1.157

34.254