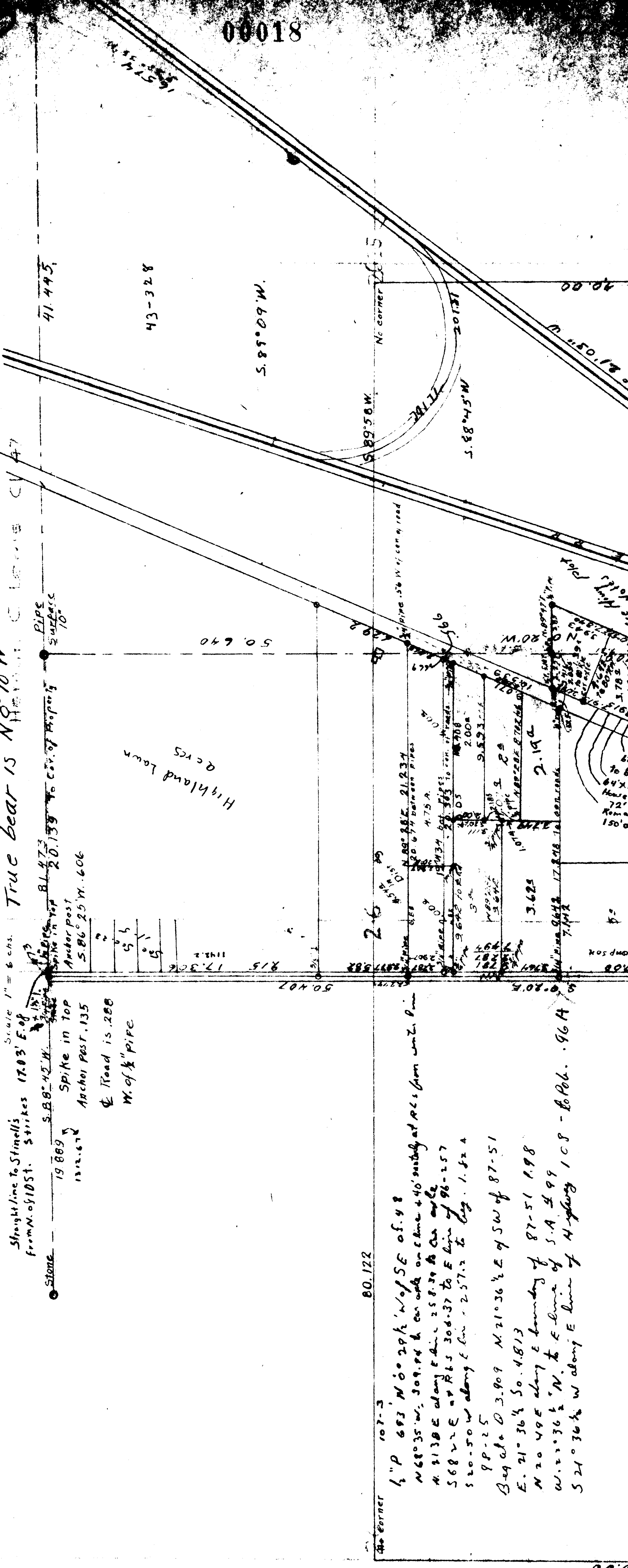


County Survey #129 T. 11 S. R. 5 W.

Scale 1" = 600 ft.
 Straight line to Stinell's
 from N. of 105th. Strikes 17.03' E. of
 Stone 19.889 S. 88° 42' W.
 Spike in top of Archol Post. 135
 1312.672
 Spike in top of Archol Post. 135
 5.86° 25' W. 606
 Road is 2.88
 W. of 1/2" pipe

True bear is N 9° 10' W



80.122

107-3
 1/2" P 683 N 0° 29' 1/2" W of SE of 48
 N 68° 35' W, 309.74 ft. on each on curve + 40' straightly at R.C.s from w. 2. Pin
 N. 2130 E along E line - 258.39 to Cur angle
 S 68° 22' E at R.C.s 308.37 to E line of 96-257
 S 20° 50' W along E line - 257.2 to Log. 1. 824
 98-25
 B-4 at 0 3.909 N. 21° 36' 1/2" E of SW of 87-51
 E. 21° 36' 1/2" S. 4.813
 N 20 49 E along E boundary of 87-51 1.98
 W. 21° 36' 1/2" N. to E line of S.A. 499
 S 21° 36' 1/2" W along E line of Highway 108 - to P.O. 964