

11-5
33

00030

County Survey No. 50

Scale 1" = 100'

WEST

CORMILLIS

William H. W.

Make = 477.00

15 = 696.04

5.89° 24' W

100'

279.1

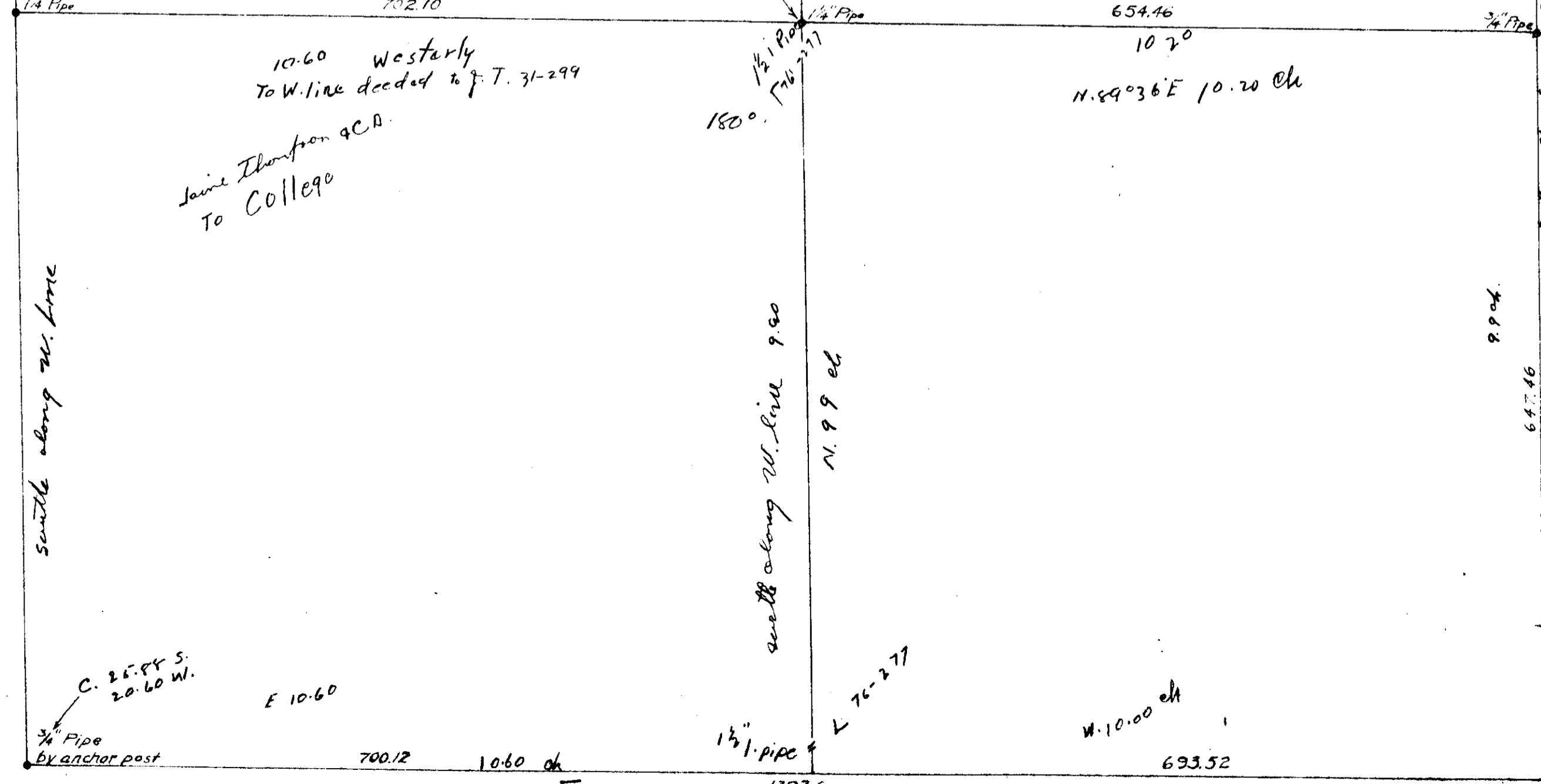
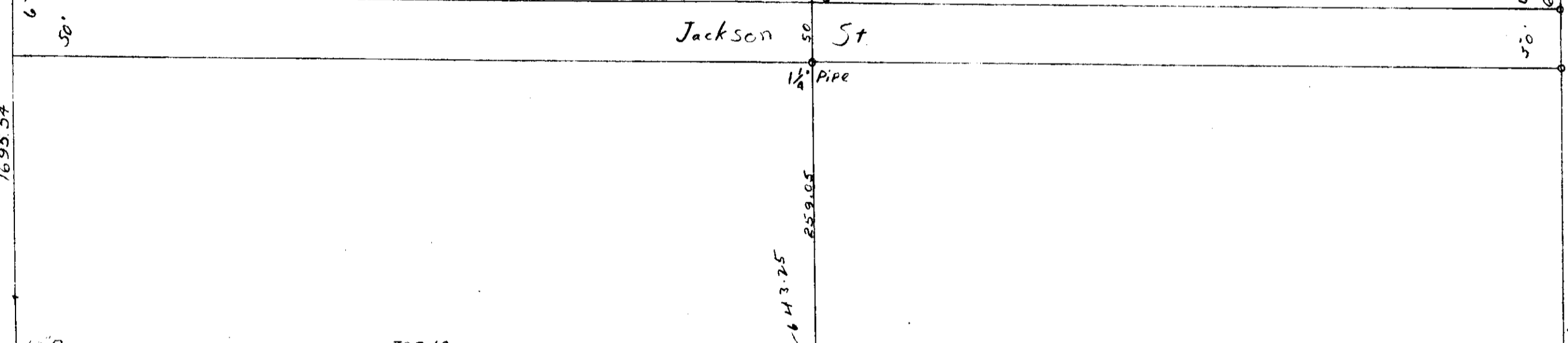
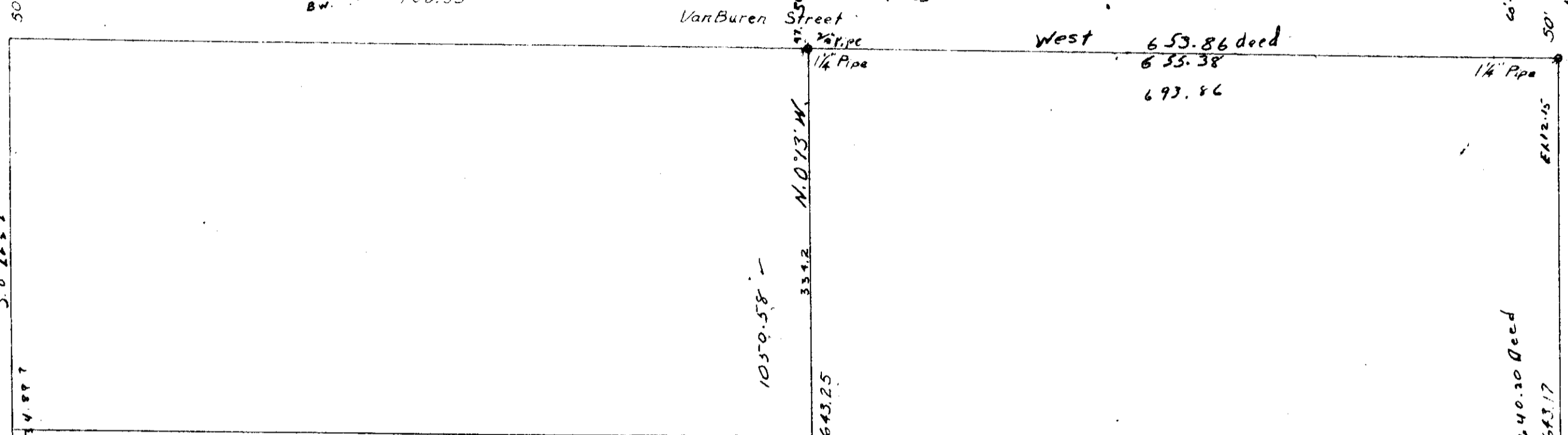
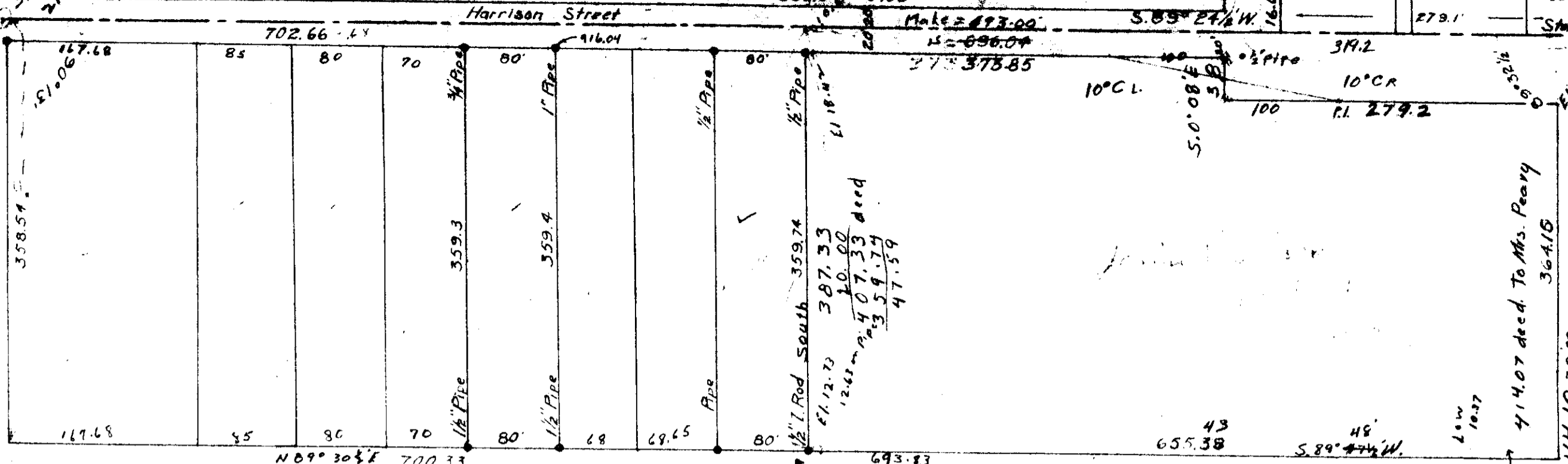
50'

589° 52' W

Case South 25.55 West 11.00
North 25.59 N. 89° 30' E 11.00
5.15° 35' S
E 1.15'

C.H. Womack - to
76-274

College
Survey 1910



Note - This Claim Subject to 1/4\"/>

County Road
1704.71
11.5021

College Sewer
E 10.00
S 0° 08' E

647.46
9.904
1569.5

1/4\"/>

10.60 Westarly
To W. line decided to T. 31-299
Same Thompson & C. B.
To College

South along W. line

South along W. line 9.60

N. 9.9 of

C. 26.44 S.
20.60 W.
1/4\"/>

E 10.60

1 1/2\"/>

76-277

W. 10.00 ch

693.52