

11-6 also 10-6 00004  
5-6-7 32

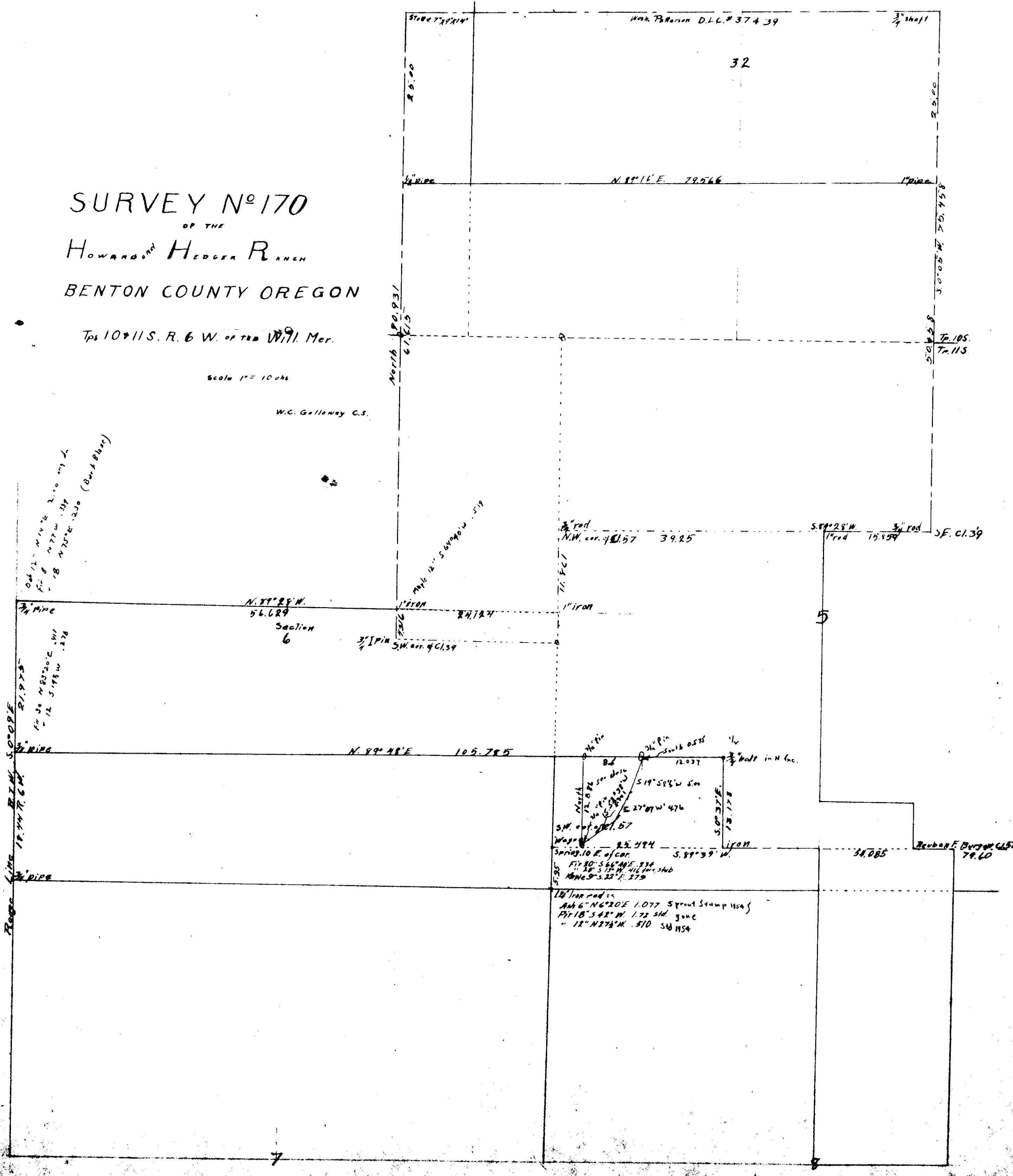
E.S. 170

# SURVEY N<sup>o</sup> 170 OF THE HOWARD<sup>AND</sup> HEDGER RANCH BENTON COUNTY OREGON

Tps 10<sup>n</sup> 11 S. R. 6 W. of the Will. Mer.

Scale 1" = 10 chs

W.C. Galloway C.S.



1913

04 12" N 14° E 2.00  
 14 8" N 77° W .307  
 18" N 70° E .270 (Bolt in place)

14 30" N 83° 20' E .511  
 12" S 19° W .278

30' PIPE  
 18" PIPE  
 18" PIPE

2" rod  
 N.W. cor. 9 C. 57 39.25

S. 89° 28' W  
 1" rod 15.859

3/4" rod  
 S.E. C. 139

N. 89° 48' W  
 56.629  
 Section  
 6

3/4" PIN  
 S.W. cor. 9 C. 57

12" Pin  
 12.037  
 519° 58' W 500  
 12" Pin  
 S.W. cor. 9 C. 57  
 25.494  
 Spring 10 E. of cor.  
 S. 89° 39' W  
 17.178  
 1" rod  
 34.085  
 Reubar E. Burdett 457  
 79.10

14" Iron rod  
 Ank 6" N 6° 20' E 1.077 Sprout Stamp 1154  
 Pit 18" S 42° W 1.72 sid. gone  
 " 12" N 27° W .510 Sid 1154