

30831

00015

# COUNTY SURVEY 249

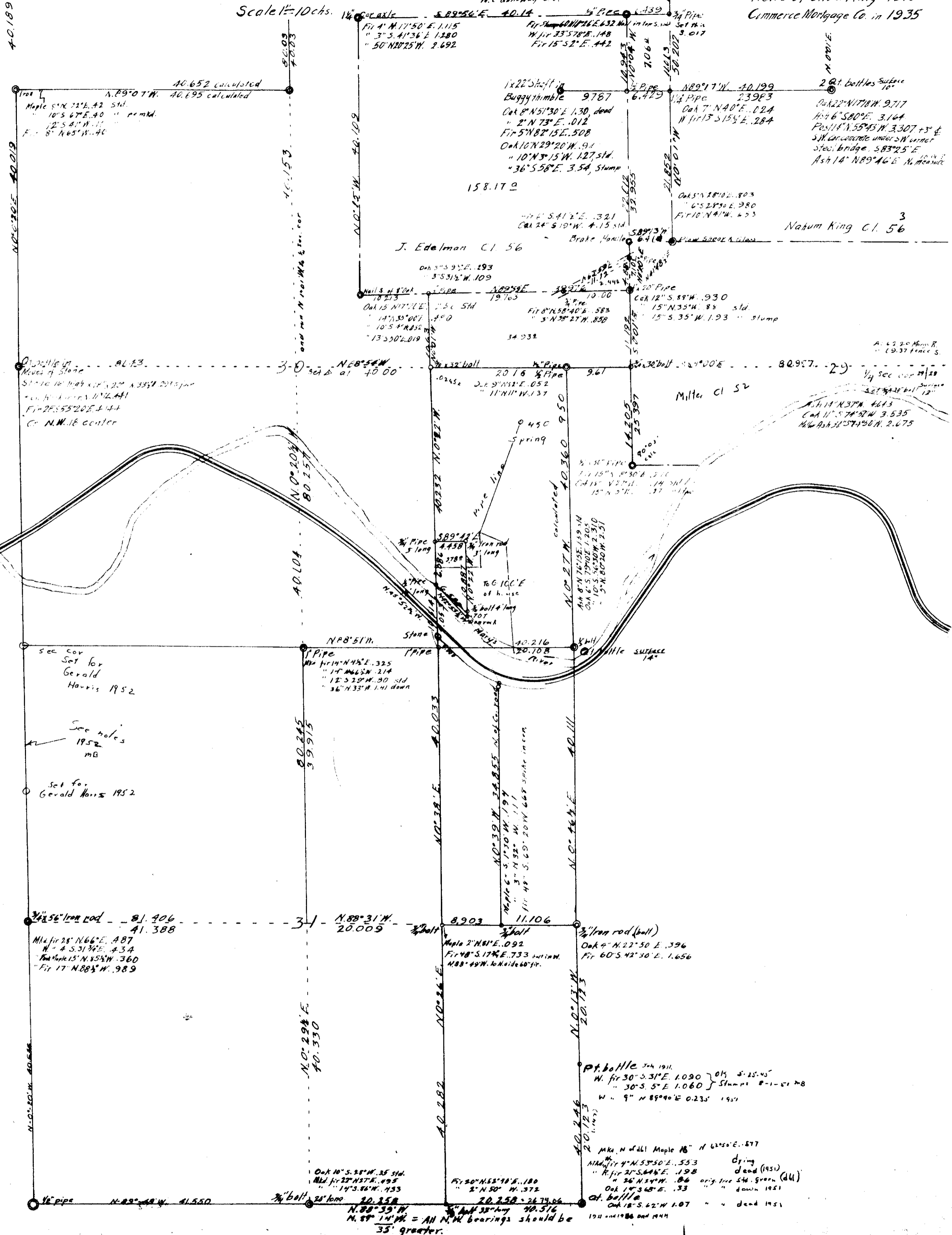
M.C. Galloway C.S.

11-6

Scale 1" = 10 chs.

Made For

Heirs of Chas King 1916  
Commerce Mortgage Co. in 1935



Fir 24" S 11° E 33 dm  
 Md. Fir 12" N 41° 25' W 31.5  
 " N 10° 34' 15" W 26  
 " 6' 8" 45" E 14.6

Oak 10" S 28° W 25 shd.  
 Md. Fir 22" N 57° E 49.5  
 " 14" S 86° W 45.3  
 Fir 20" N 53° 10' E 180  
 " 2" N 50° W 373  
 20.258 - 26.74.06  
 " 38" long 40.516  
 N 89° 39' W  
 N 89° 14' W = All N.W. bearings should be  
 35' greater.

Pt. bottle July 1911  
 W. fir 30" S 31° E 1090 } 015 S 25° 45'  
 " 30" S 5° E 1.060 } Stumps 8-1-51 MB  
 W. " 9" N 89° 40' E 0.235 1951  
 Mkt. N of 611 Maple 18" N 62° 50' E .877  
 Md. Fir 4" N 53° 50' E .553 dry  
 " R. fir 21" S 64° E .198 dry (1951)  
 " N 26" N 24° W .06 orig. tree shd. green (dhl)  
 Oak 14" S 65° W .33 " down 1951  
 at. bottle  
 Oak 18" S 42° W 1.07 " " dead 1951  
 1911 and 1935 and 1944

Natum King Cl. 56

Miller Cl 52

J. Edelman Cl 56

40.652 calculated  
 N 89° 07' W 40.695 calculated  
 Maple 5" N 72° E 42 shd.  
 10" S 67° E 40 " p.m.k.  
 12" S 41° W 11  
 E. 8" N 65° W 40

0.243  
 Means of Stone  
 Stone 10" high x 12" x 20" N 33 3/4° W 201.5 pm  
 " 10" N 100° W 172.441  
 Fir 27.5 S 52° 20' E 144  
 Cr. N.W. 1/8 center

See cov  
 Set for  
 Gerald  
 Harris 1952

See notes  
 1952  
 MB

Set for  
 Gerald Harris 1952

3/8" iron rod 81.906  
 41.388  
 Mkt. fir 28" N 66° E 487  
 " 4" S 31 3/4° E 434  
 Oak 15" N 85 1/2° W 360  
 Fir 17" N 88 1/2° W 989

106 ICC'E  
 of h. use  
 707  
 707  
 707  
 707

N 11° 19' 37" W 4613  
 Oak 11" S 74° 37' W 3.535  
 Mkt. Ash 3 1/2" S 74° 30' W 2.675