

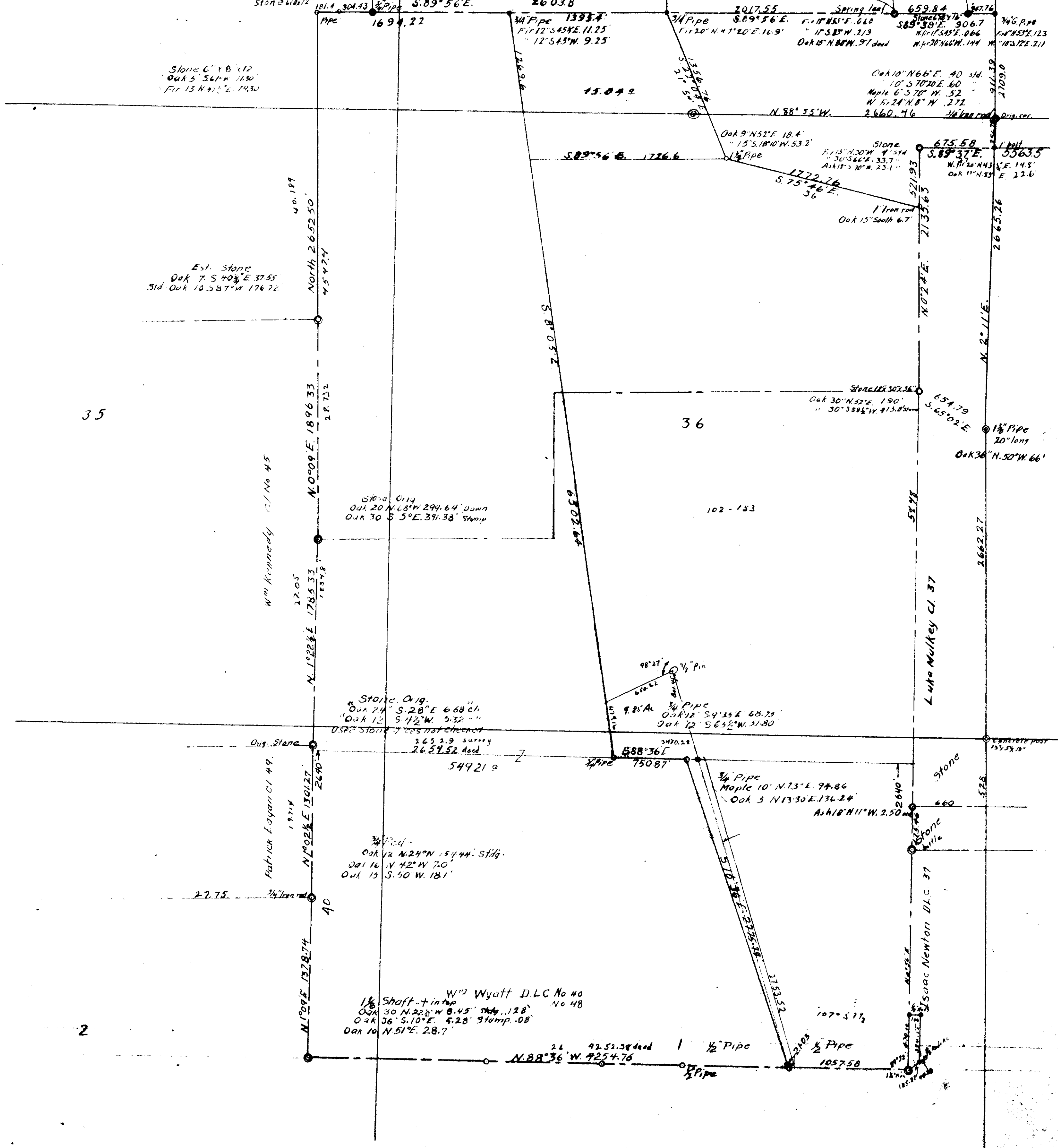
C.S. N^o 37 Continued

Feb 1912 For John Wyatt
Oct 1912 Frank Wyatt
June 1940 Eva Wyatt

Sec. 36-11-6 Sec. 1-12-6

Scale 1" = 600' Burt Wilkes

30.569 C1.47 C1.44
9.937 3.801



35

36

102-153

Stone Orig.
Oak 24 S 28° E 6.68 ch.
Oak 12 S 42° W 5.32 "
Used Stone - tops not checked
265 2.9 survey
265 4.52 dead

3/4" Pipe
Oak 12 N 24° W 54.44' stlg.
Oak 16 N 42° W 7.0'
Oak 15 S 50° W 18.1'

W^o Wyatt D.L.C. No 40
No 48
1/8" Shaft - + in top
Oak 30 N 22° W 8.45' stlg. 128'
Oak 36 S 10° E 5.28' stump .08
Oak 10 N 51° E 28.7'

9.85' Al
Oak 12 S 43° E 68.75'
Oak 12 S 63° W 51.80'

3/4" Pipe
Maple 10 N 73° E 94.86
Oak 5 N 13° 30' E 136.24'

Ash 10 N 11° W 2.50'

26 42.52.38 dead
N 88° 36' W 7254.76
1/2" Pipe
1057.58
3/4" Pipe

2