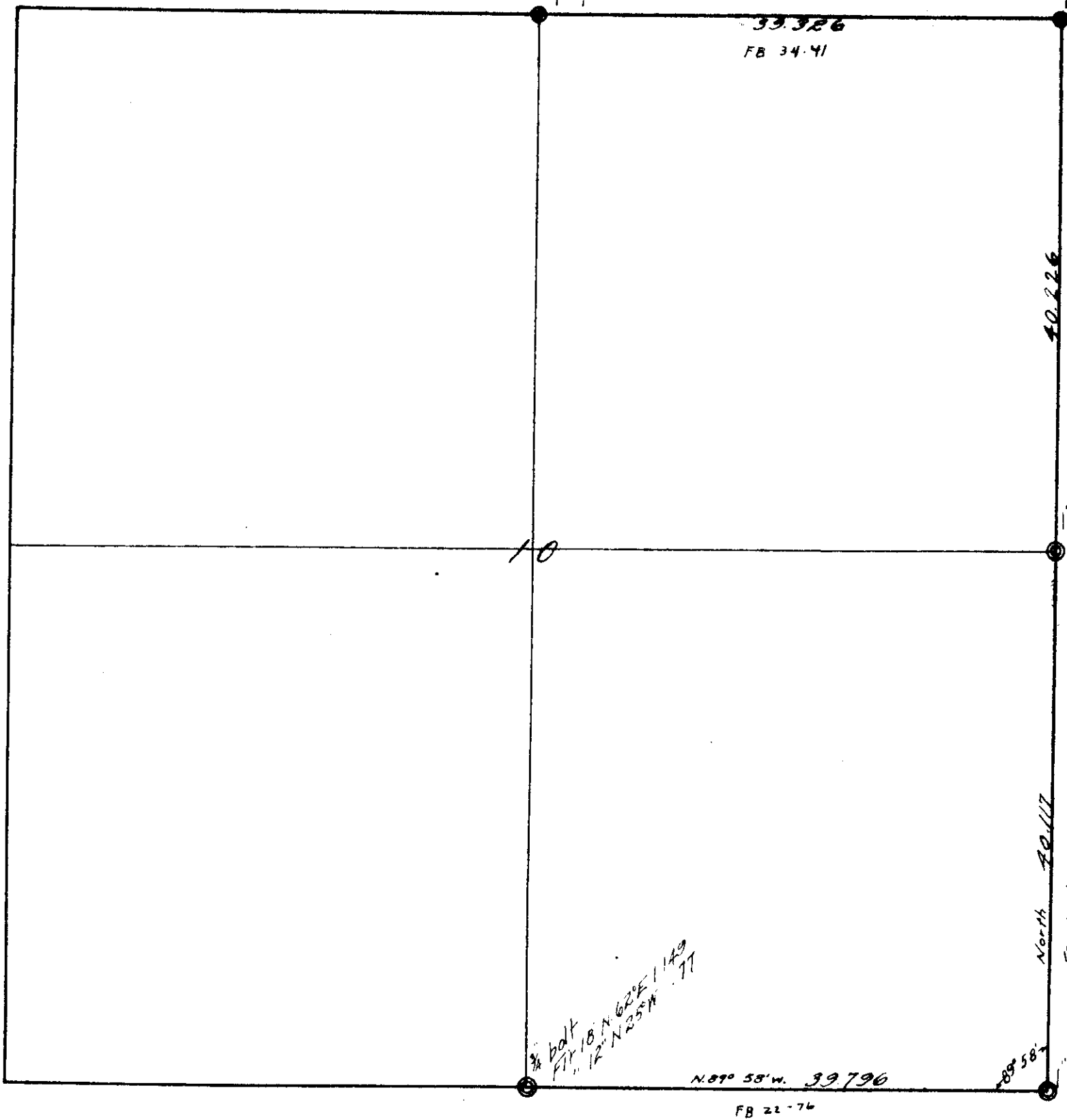


11-7
10-15

00005

C3 258
Scale = 10 chs



3/4 rod by post
FIT 15
N 40° E 340
N 40° E 80x

1/2 stake
FIT 12
S 70° W 60 (stamp)
N 8° W 44 (stamp)
1/2 stake
FIT 15
N 15° E 115 (stamp)
S 82° E 120 (stamp)

1/2 rod
FIT 24
S 89° 15' E 125
S 19° W 120

1/2 rod
FIT 26
N 71° 30' E 30
S 7° 20' E 338
S 35° W 433
N 49° W 150

3/4 bolt
FIT 18
N 62° E 1149
N 25° W 77

N 09° 58' W, 39.790
FB 21-74

20.117
North
FB 22-74

33.326
FB 34-41

40.226

10

10