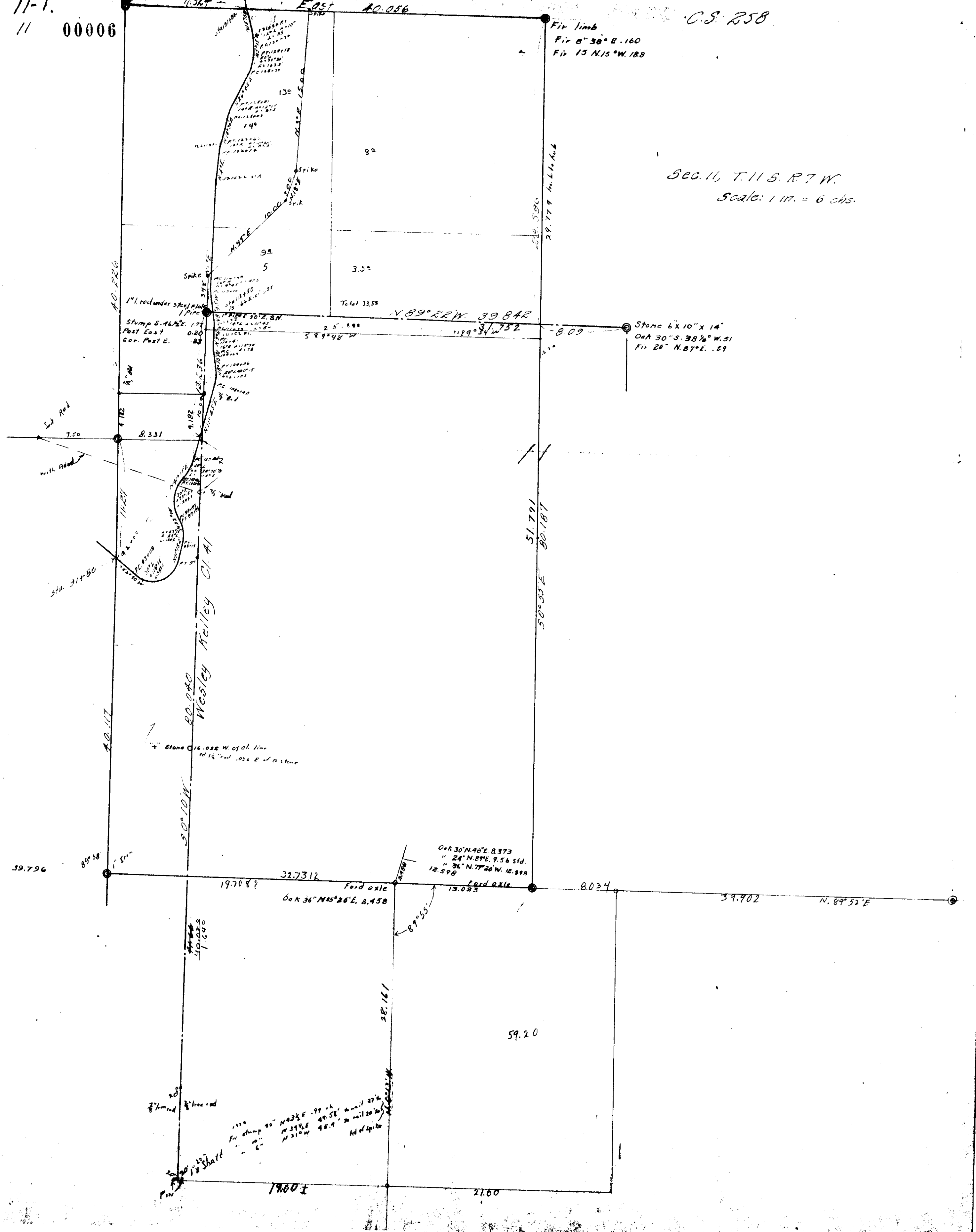


11-1. 00006

C.S. 258

Fir limb  
Fir 8° 38' E. 160  
Fir 15 N. 15° W. 188

Sec. 11, T. 11 S. R. 7 W.  
Scale: 1 in. = 60 chs.



40.226

1" red under steel plate  
1" pipe  
Stump S. 46 1/2° E. 177  
Post East 0.20  
Cor. Post E. .88

N. 89° 22' W. 39.842

Stone 6x10"x14"  
Oak 30° S. 38 1/2° W. 51  
Fir 20° N. 87° E. .89

Set Rod  
with Road

7.50

8.331

9.182

Sta. 31+80

Wesley Kelley Ct. A

80.040

S. 30° 10' W.

Stone 16.032 W of ch. line  
1 1/2" red .032 E of stone

39.796

89° 58'

1" 5" m

19.708?

32.7312

Ford axle

Oak 36° N 45° 26' E. 2.458

Oak 30° N 40° E. 8.373  
" 24° N. 87° E. 9.56 Sid.  
" 36° N. 77° 20' W. 12.898  
12.598

Ford axle

87° 55'

28.161

8.034

39.902

N. 89° 52' E

59.20

2 1/2" red

2 1/2" red

Pin

1 1/2" Shaft

19.00 ±

21.60