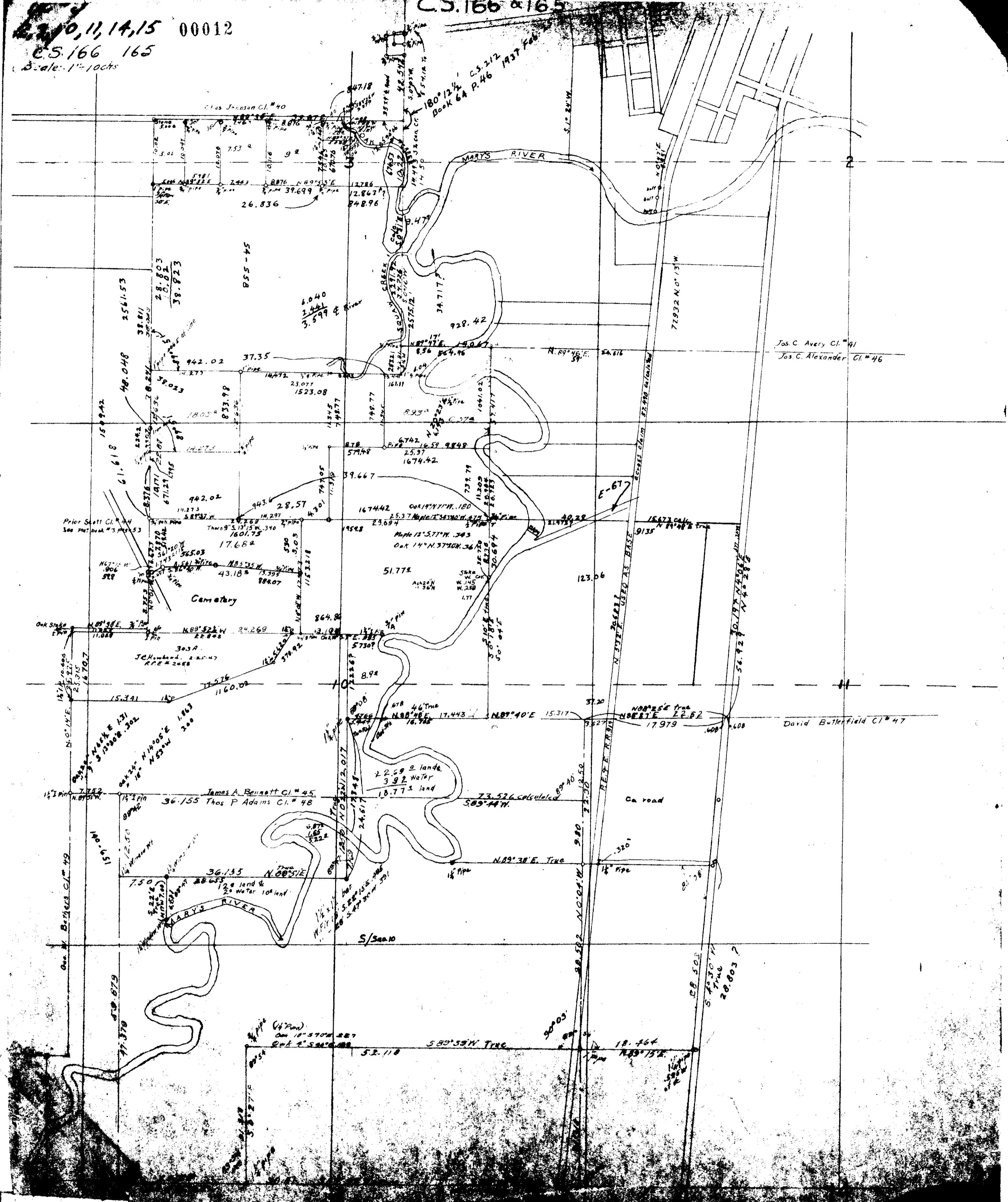


C.S. 166 & 165

10, 11, 14, 15 00012
C.S. 166 165
Scale: 1"=100ft



Claus Johnson Cl. #40

180° 12 1/2' C.S. 212
Book 64 P. 46 1937 Feb

Jos. C. Avery Cl. #41
Jos. C. Alexander Cl. #46

Prior Scott Cl. #44
See Plat Book #3 p. 53

Cemetary

David Butterfield Cl. #47

James A. Bennett Cl. #45
Thos P Adams Cl. #48

Geo. W. Butterfield Cl. #49

MARYS RIVER

S/Sec 10

REPEATEDLY USED AS BASE

(1/2 Pond)
On 18° 57' 00" S 27'
Dist 2° 55' 00" W

589° 55' W Trac.

18.464
N 89° 15' E