

12-5
3

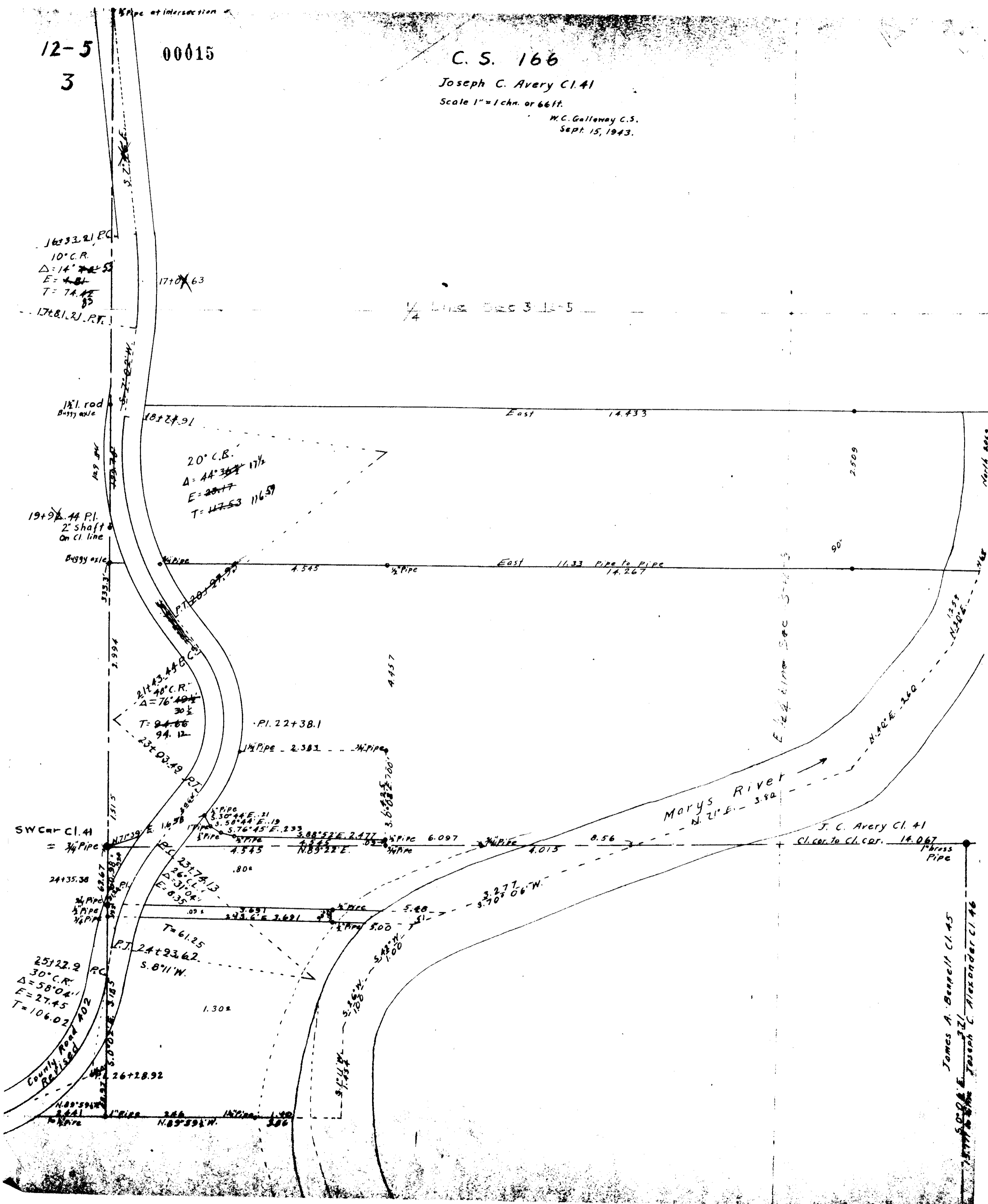
00015

C. S. 166

Joseph C. Avery Cl. 41

Scale 1" = 1 chn. or 66 ft.

W.C. Galloway C.S.
Sept. 15, 1943.



16+33.21 P.C.
10° C.R.
Δ = 14° 24' 53"
E = 4.81
T = 74.45
17+81.21 P.T.

17+06.63

1/4 Line Sec 3-12-5

1 1/2" rod
Buggy axle
19+92.44 P.I.
2" shaft
On Cl. line
Buggy axle

18+27.91

20° C.B.
Δ = 44° 36' 17 1/2"
E = 20.47
T = 117.53 116.59

East 14.433

East 11.33 Pipe to Pipe 14.267

21+43.44 P.C.
40° C.R.
Δ = 76° 40' 30 1/2"
T = 94.66 94.12

P.I. 22+38.1

SW Cor Cl. 41

J. C. Avery Cl. 41

Cl. cor. to Cl. cor. 14.067
1" brass Pipe

25+22.2 P.C.
30° C.R.
Δ = 58° 04' 11"
E = 27.45
T = 106.02

P.T. 24+23.62
S. 87° 11' N.

James A. Bennett Cl. 45
Joseph C. Alexander Cl. 46

County Road 402
Revised
26+28.92

N. 89° 59' 1/2" W. 2.66
1" Pipe 2.66
N. 89° 59' 1/2" W. 3.00
1 1/2" Pipe 3.00