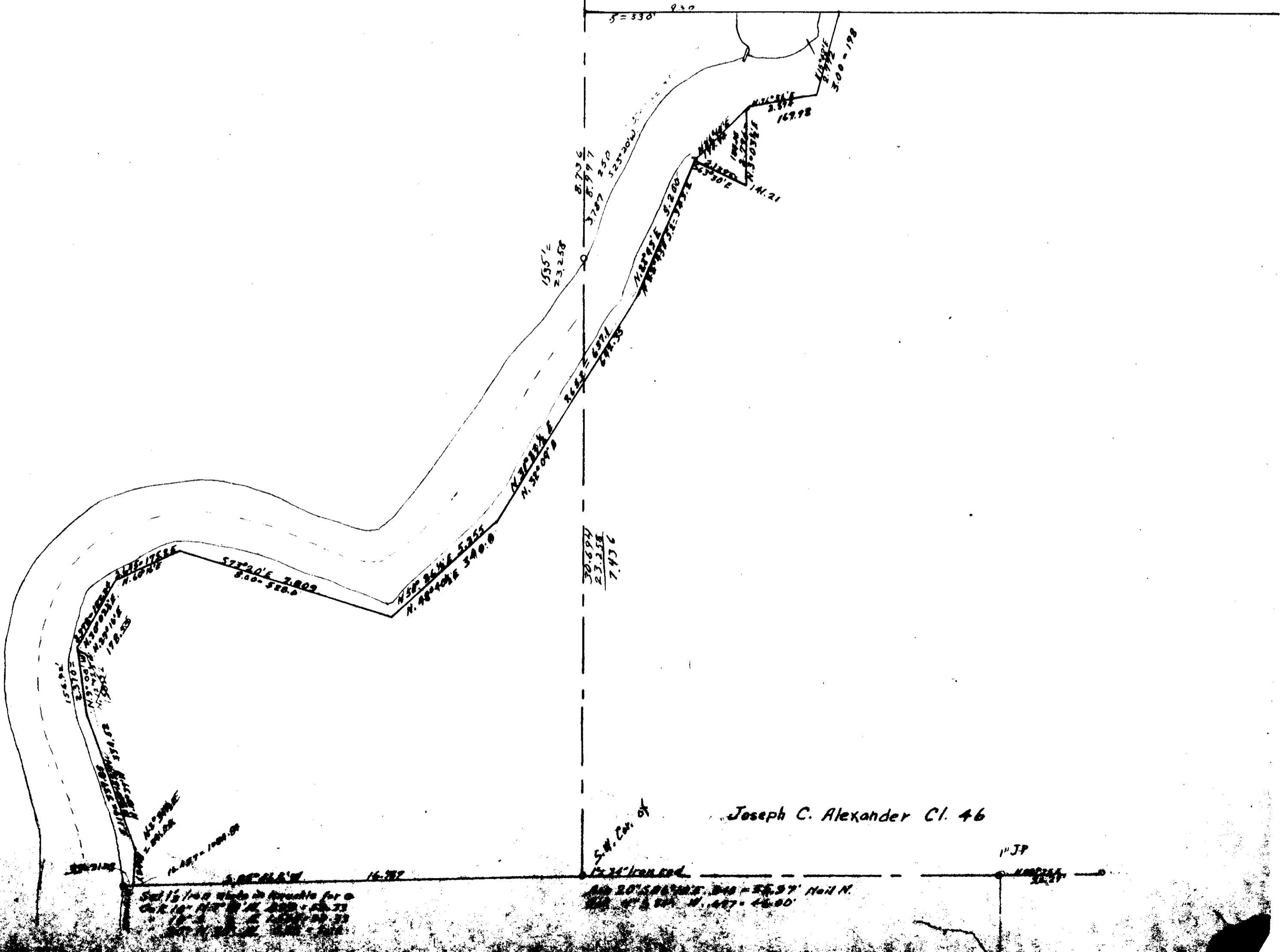


12-5

11

00029

C.S. 25
Jos. C. Alexander Cl. 46
T 12



Joseph C. Alexander Cl. 46

Sect 15 1/4 in width in front of for a
 Ch. 10' 10" in N. 32° 07' 00" E
 10' 10" in N. 78° 40' 00" E
 10' 10" in N. 85° 25' 00" E

20' 5" 0" 0" in N. 32° 07' 00" E
 20' 5" 0" 0" in N. 78° 40' 00" E

"JP"