

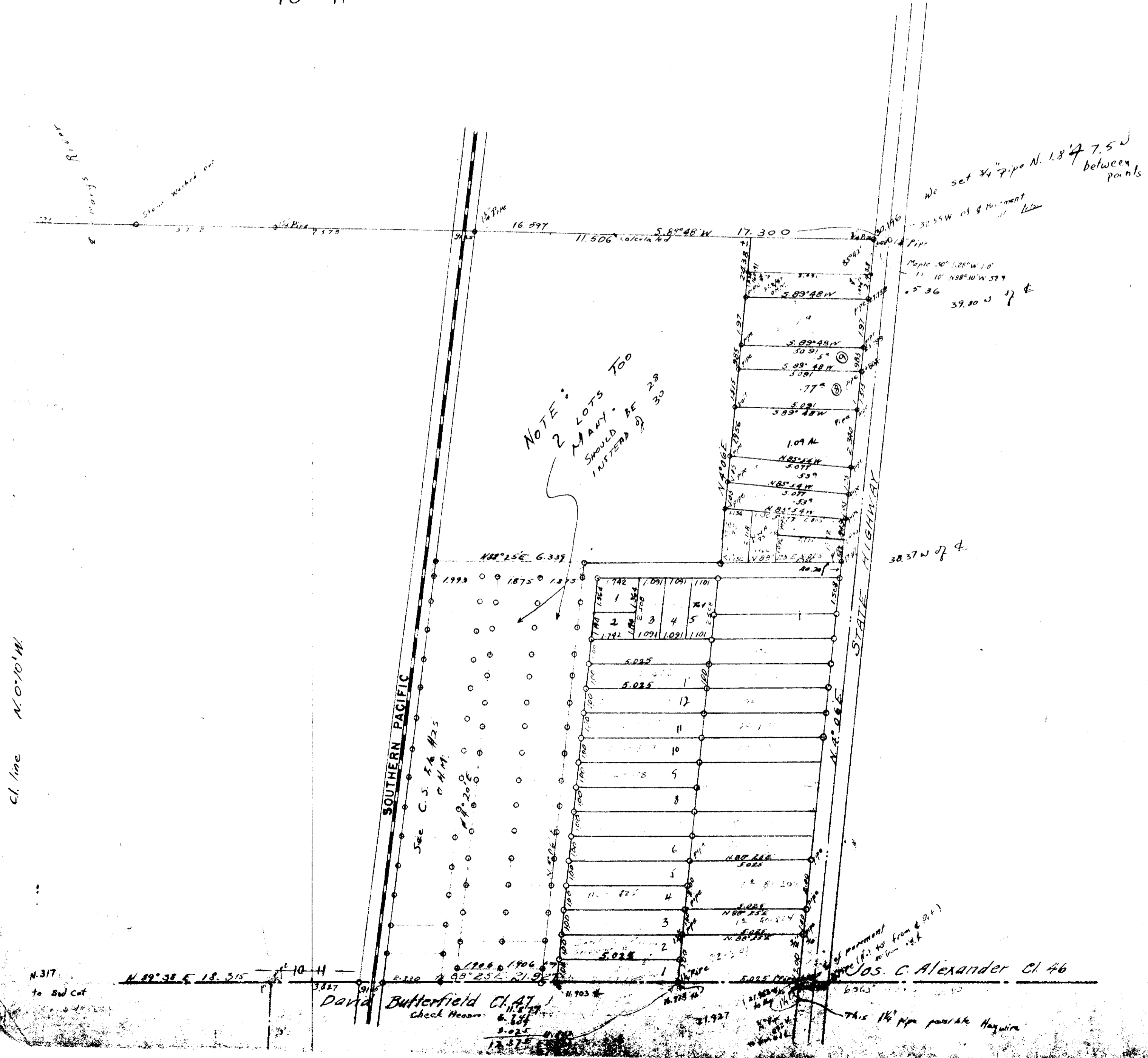
12-3
11

00030

C.S. 25
Scale: 1 in. = 3 chs.

3 2

10 11



NOTE:
2 LOTS TOO
MANY -
SHOULD BE 28
INSTEAD OF 30

We set 4" pipe N. 1.8' of 7.5' W
between points

32.55 W of §
Maple 30° 28' W 1.0'
11 10' N 88° 30' W 52.9'
39.80 W of §

38.37 W of §

SOUTHERN PACIFIC

STATE HIGHWAY

See C.S. 1 & 2
C.H.M.

Butterfield Cl. 47
Check Heam

Jos. C. Alexander Cl. 46

This 14" pipe parallel Haywire

Cl. line N. 0° 10' W

N. 317
to SW cut

N. 89° 38' E 18.315

N. 89° 25' E 21.927

S. 89° 48' W 17.300

16.597

11.506

17.300

30.196

N. 88° 25' E 6.339

1.993

1.875

1.875

1.742

1.091

1.091

1.101

1.792

1.091

1.091

1.101

5.025

5.025

17

11

10

9

8

6

5

4

3

2

1

N. 88° 48' E

5.025

1.875

N. 88° 25' E

1.875

N. 88° 25' E

1.875

N. 88° 25' E

1.875

N. 88° 25' E

1.875

N. 88° 25' E

1.875

N. 88° 25' E

1.875

N. 88° 25' E

1.875