

12-5 00038

16

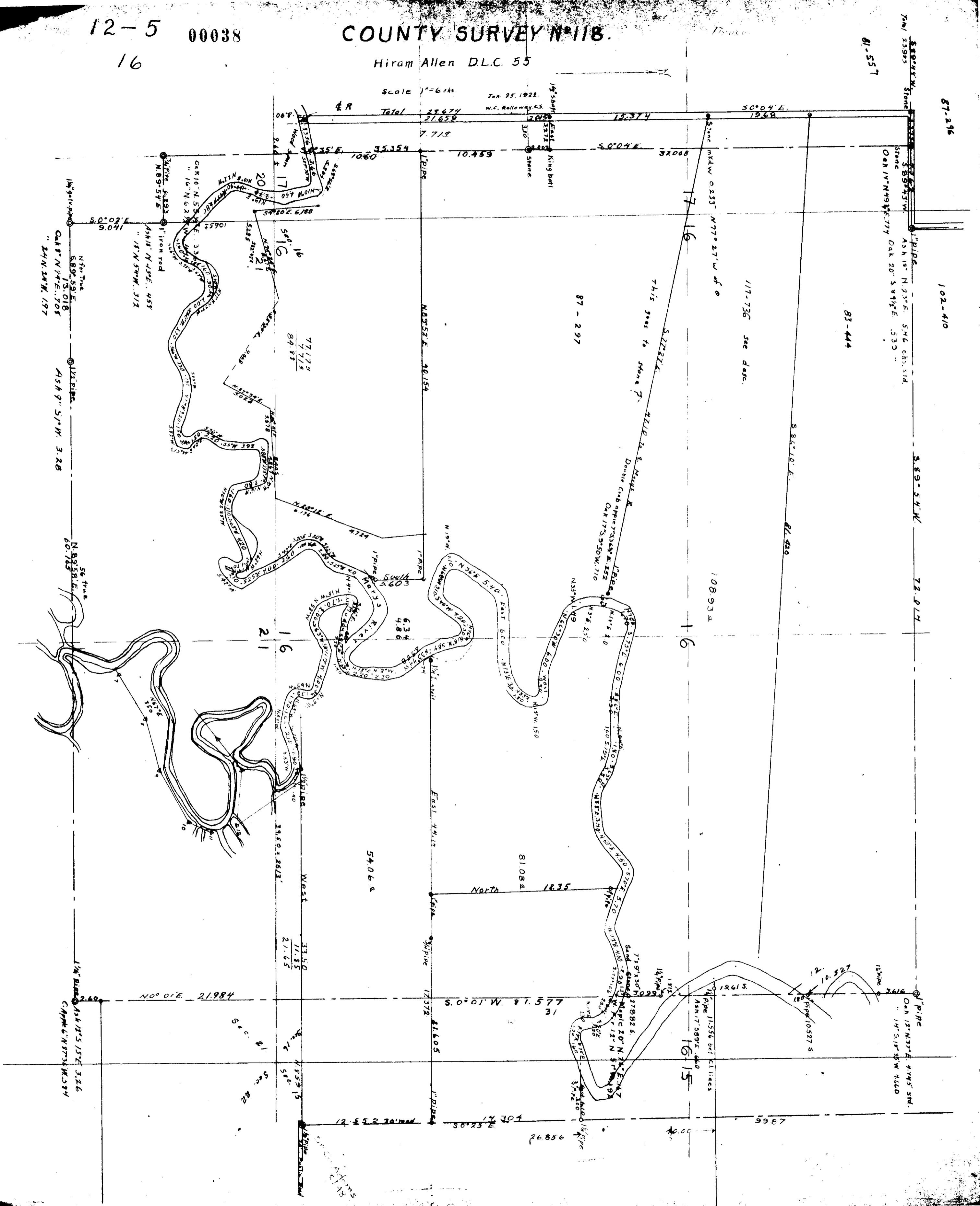
COUNTY SURVEY N°118.

Hiram Allen D.L.C. 55

Scale 1"=60 chs

Jan 25, 1922.
W.C. Balloway, C.S.

ER Total 27,674
27,659



01-557

87-296

102-410

83-444

117-736 see desc.

87-297

10893 E

16

5406 E

8108 E

1835

16-15

9987

26856

1430 E

12552

2.60

NO° 01'E 21984

33.50

11.85

21.65

1459 15

56°

1 1/2\"/>