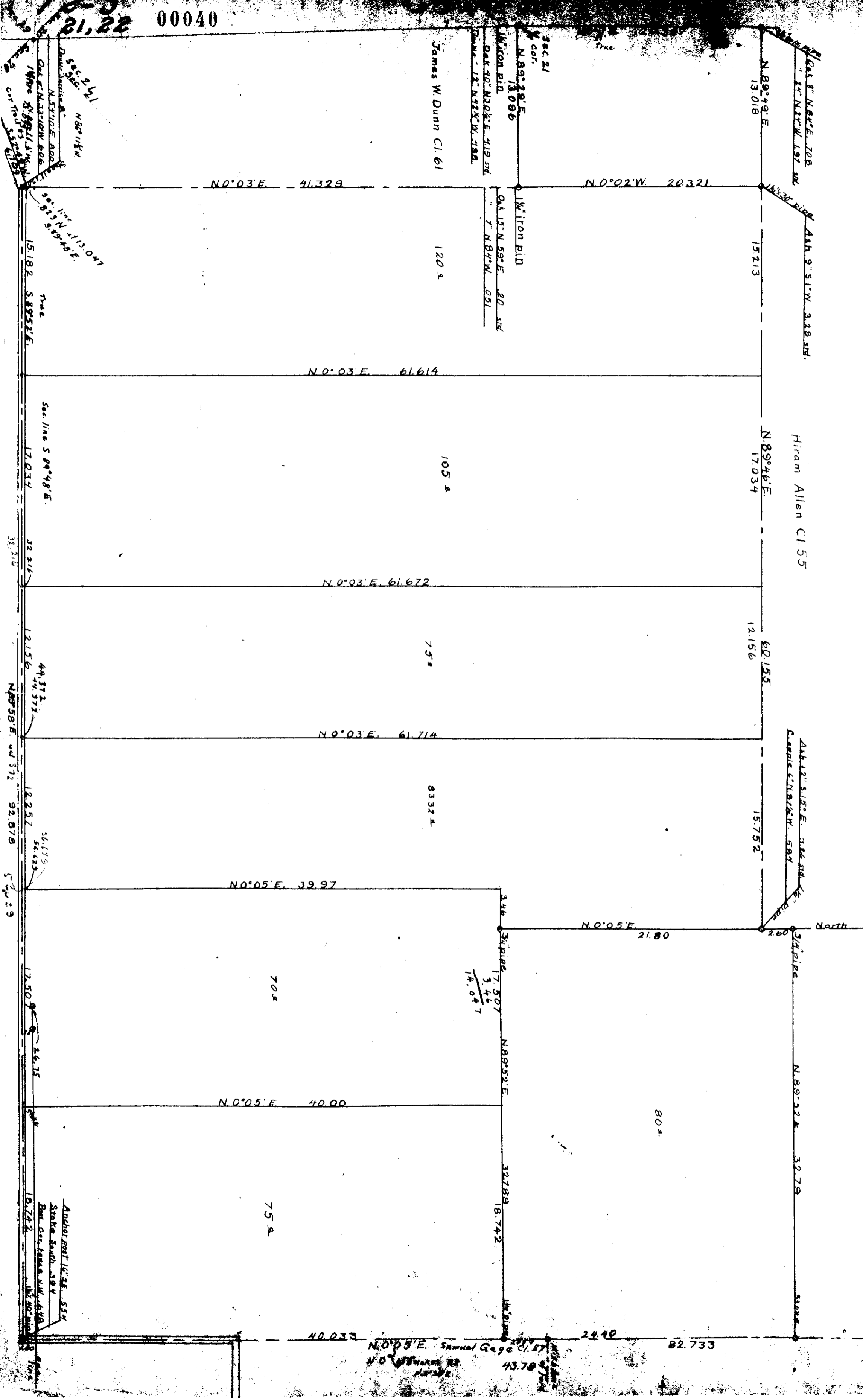


COUNTY SURVEY #268

John R. Rowland Heirs
 Alfred Rhinehart C.I. 73 T.125.R. 5 W.W.M.

Scale 1" = 60chs.

W.C. Galloway C.S.
 Jan 4 Aug 1918.



Change accepted by...
 (03.11.22)

00040
 21.22

40.033 N 0° 05' E... 24.40 82.733 18.30

Anchor post 1/2" x 3/4" SS...
 Stake South 194
 Post cast from NW corner