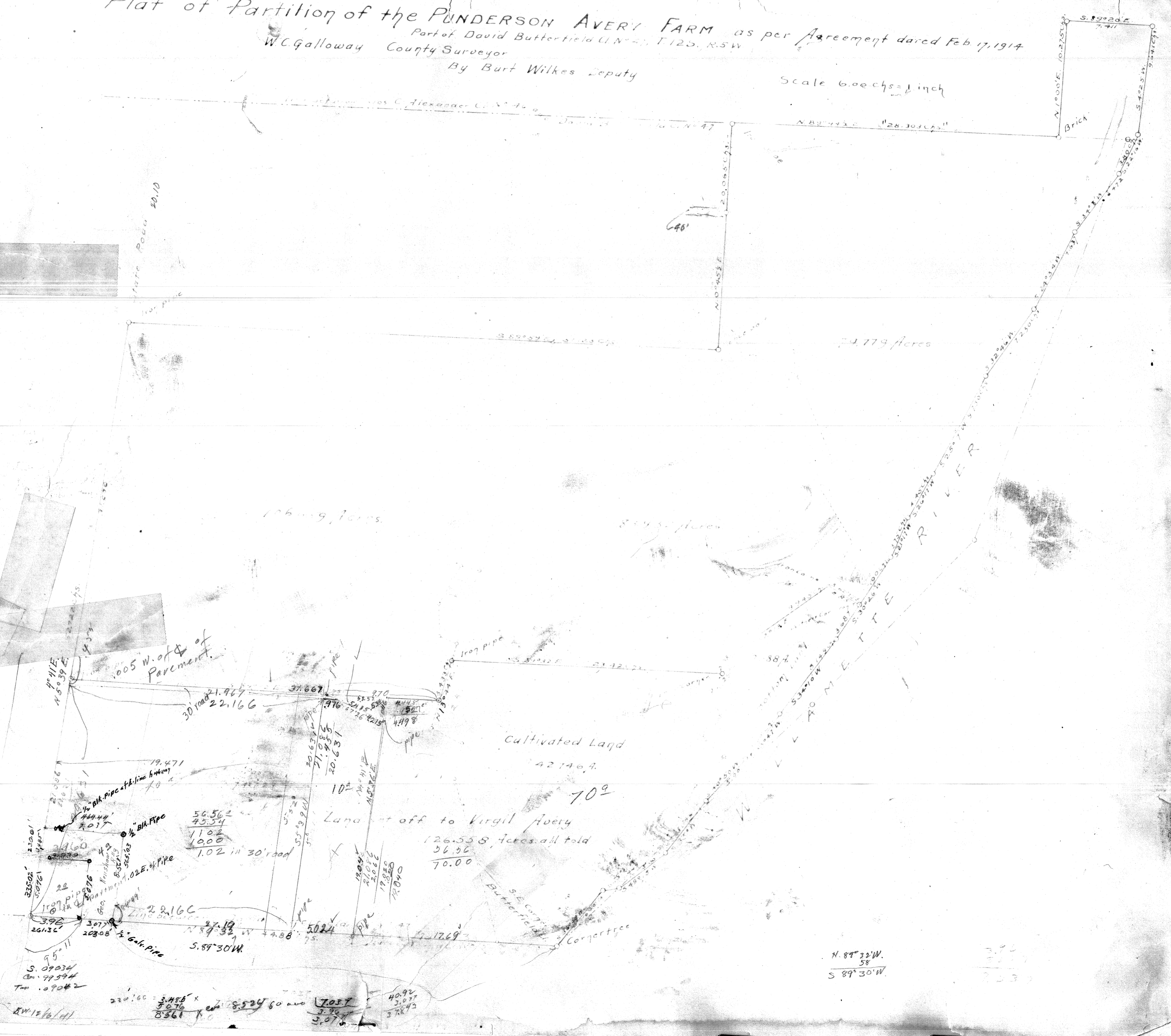


Plat of Partition of the PUNDERSON AVERY FARM as per Agreement dated Feb 17, 1914
 Part of David Butterfield U.N. 47, T.12S, R.5W
 W.C. Galloway County Surveyor
 By Burt Wilkes Deputy

Scale 6.00 chs = 1 inch

C.S. # 206
 12-5
 11 & 14



220.00 = 3.486 x
 8070
 8561 x
 8.524 60 and 7057
 3.37
 3.07
 37.43

N. 89° 32' W.
 38
 S. 89° 30' W.