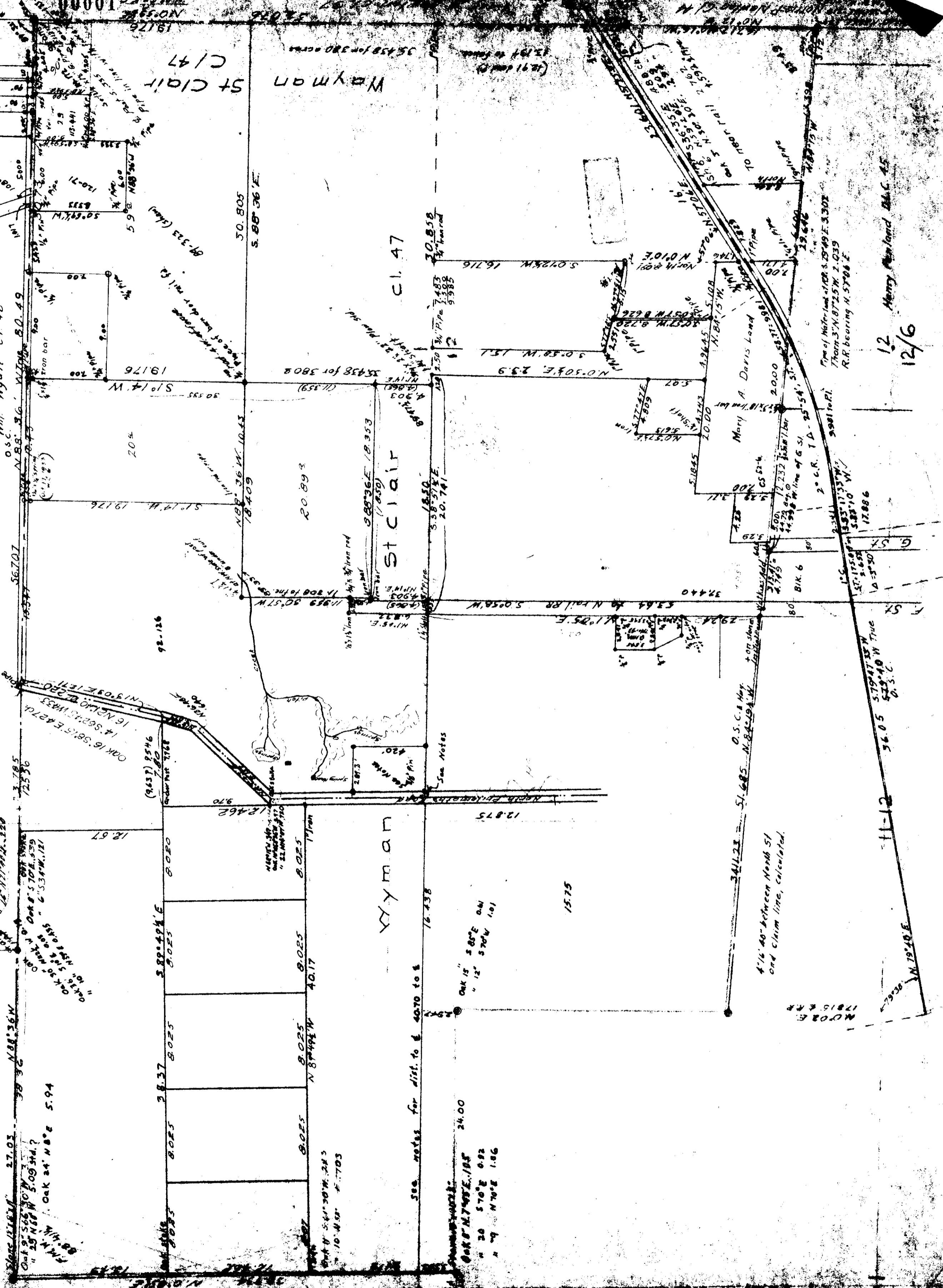


# COUNTY SURVEY #37

## Wayman St Clair CL47 Sec 12 T12SR6W

Scale 1" = 60 ft  
 W.C. Galloway C.S.  
 July 9 1923

1. N. 88° 36' W. 80.49  
 Wm. Myatt's C148



12 Merry Maryland Blk C 45  
 12/6

27.03  
 Oak 9 56° 30' W 5.09 34.4?  
 Oak 20 51° 08' W 5.33 44.121  
 Oak 24 N 80° E 5.94  
 Oak 16 56° 15' E 4.27 4  
 Oak 14 56° 20' W 3.52 41.733  
 Oak 15 56° 15' E 4.27 4  
 Oak 16 56° 15' E 4.27 4  
 Oak 17 56° 15' E 4.27 4  
 Oak 18 56° 15' E 4.27 4  
 Oak 19 56° 15' E 4.27 4  
 Oak 20 56° 15' E 4.27 4  
 Oak 21 56° 15' E 4.27 4  
 Oak 22 56° 15' E 4.27 4  
 Oak 23 56° 15' E 4.27 4  
 Oak 24 56° 15' E 4.27 4  
 Oak 25 56° 15' E 4.27 4  
 Oak 26 56° 15' E 4.27 4  
 Oak 27 56° 15' E 4.27 4  
 Oak 28 56° 15' E 4.27 4  
 Oak 29 56° 15' E 4.27 4  
 Oak 30 56° 15' E 4.27 4

See notes for dist. to 4070 to 1  
 Oak 15 58° E 0.41  
 " 12 57° 45' 1.01  
 24.00  
 Oak 8 N 74° 45' E 1.85  
 " 20 57° 02' 0.82  
 " 4 77° 02' 1.06

4' 16' 40" between North St  
 and claim line, calculated.

11-12 36.05 57° 41' 15" W True  
 57° 41' 15" W  
 14° 53' 30" D.S.C.