

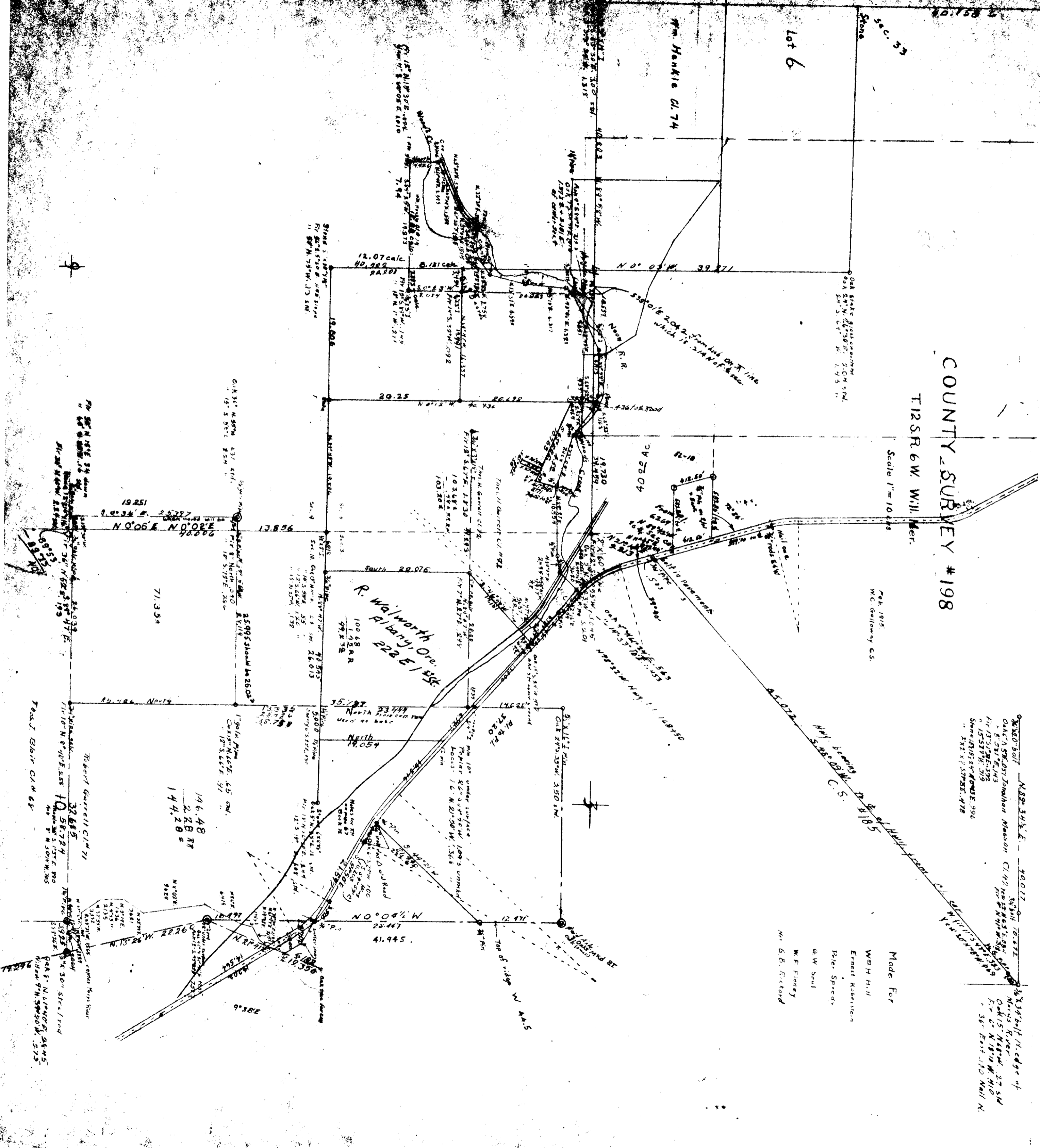
COUNTY SURVEY #198

T12S R6W Will. Mer.

Scale 1" = 1000'

Feb. 1915
W.C. Callaway C.S.

Made For
W.H. Hill
Ernest Robertson
Peter Spradley
G.W. Seal
W.F. Finney
W. G. Rickford



3/4" x 3/4" bolt N 88° 34' 1/2" E - 20.017
3/4" bolt 10.871
Oak A.S.M. 037 Jonathan Mason C142
E 51° E 103
11 13.517
11 15.537
Sonn 0181547-4042 E. 296
11 211 X 2.57855. 478

3/4" x 3/4" bolt N. edge of
Mud Creek
Oak 15 N 81° W 27.54
11 36' East 110 Nail N.

R. Wadsworth Ore.
222 E 1 1/2 S
100.68 R
99.858

146.48
2.28 RT
144.20 S

32.685
10.58724
11 58.724
11 58.724
11 58.724
11 58.724

12-6-00003

COUNTY SURVEY #198

T.12S.R.6W. Will. Mer.

Scale 1" = 10 chs.

Feb. 1915.
W.C. Galloway C.S.

3/4" x 3/4" bolt
 Oak 15° 51' 03" Jonathan Masson Cl. 42
 8° 24' E. 143
 Fir 15° 51' 03" 193
 Stone 15° 51' 03" 193
 Stone 15° 51' 03" 193
 " Fir 15° 51' 03" 193

Made For
 Wm H. Hill
 Ernest Koberstein
 Peter Speedy
 G.W. Soule
 W.F. Finney
 Ma. G.B. Rickard

WENE 337

C.S. 198

12-6-3, 1, 9, 10

