

12-6
6

00006

5 Pipe NB9°49'W 2742.3 34 Bolt 18 37 35 8 1/2 1737 23 30 14 86

Fir 24°S. 11°E. 33 31d.
Oak 14°N. 7°E. 51.5
" 1°S. 6°E. 15. W. 26
" 6°S. 41°E. 14.6

Oak 10°S. 20°W. 23.13d.
Fir 22°N. 7°E. 32.7
" 1°S. 8°W. 28.6

Fir 20°N. 52°E. 11.9
" 2°N. 50° W. 24.6
Oak 1°N. 5°E. 36.5 1/2
" 21°S. 64°E. 13.1
" 26°N. 24°W. 56.8 0/100
Oak 1°N. 5°E. 21.8
" 12°S. 62°W. 70.6

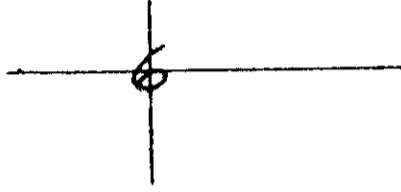
County Survey No 231

2662.0

S. 13' W.

Wagon hub

Fir 20°N. 46°N. 62°E. 32.3 3d.
" 24° " 48°S. 60°W. 77.9 "
" 3° N. 15°W. 4.6
" 4° S. 32°W. 1.5
S. 46°03'W. to E Marys Peak Lookout



Wagon thimble

Oak 9°S. 48°E. 9.4
" 9°S. 63°W. 8.4
Ash 6°N. 42°W. 8.4

4° C.R.
A=110.54
T=136.68
E=6.5

Oak 4°S. 44°08'E. 40.1
Fir 11°S. 20° E. 17.8
" 18°S. 79° W. 12.5
Maple 4°N. 55°15'W 24.7

5 Pipe

Cedar 30°N. 53°E. 55.44'
Maple 30°N. 18°W. 9.24
Alder 10°S. 32°E. 23.76

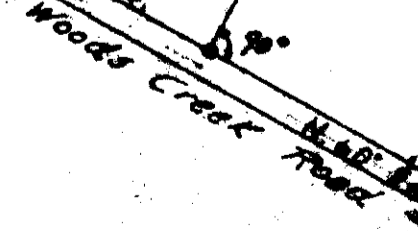
190°15.77 Pt.
191°45.59 Pt.
192°15.58 Pt.

5 Pipe

190°15.77 Pt.
192°15.58 Pt.

R. 178°51.9

1° 30' C.L.
Δ 17° 15'
T=579.40
E 43.73
L=1150.0
R 3819.72



Woods Creek Road

5 Pipe

3 with stumps N. 15° E. 2.6'
Fir 3.0° E. 6.9'

191°26.67
192°15.58
193°15.58
194°15.58
195°15.58
196°15.58
197°15.58
198°15.58
199°15.58
200°15.58

S. 13' W.

S. 18' W. ?

Stone Mark

1/2 rod

168°15.58 N. 0° 00' W.