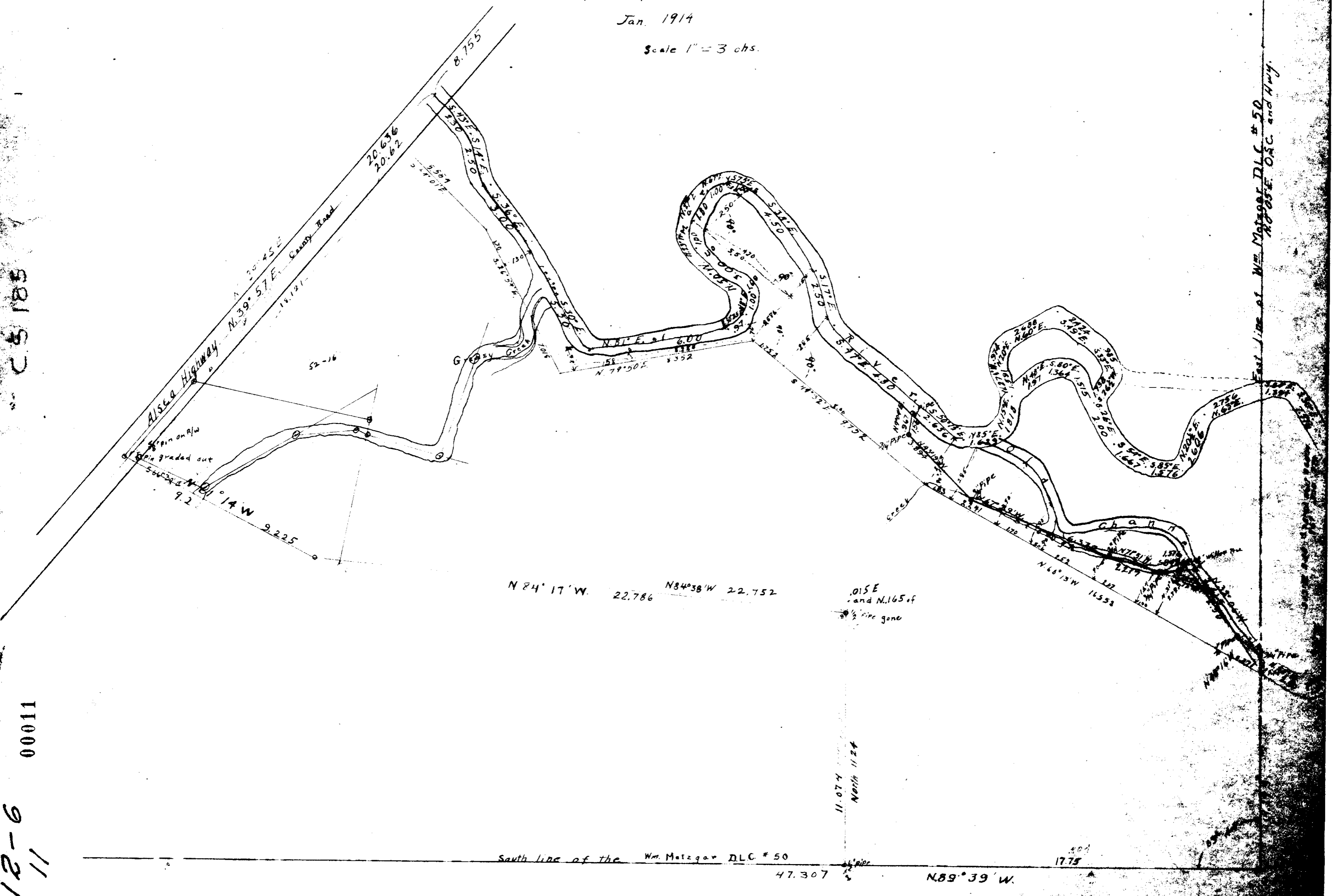


C.S. 185

12-6  
11  
00011

Point on S. rail  
C.S. #185 in  
Wm Metzgar D.L.C. #50  
T. 12 S. R. 6 W. W.M.  
Jan. 1914  
Scale 1" = 3 chs.



East line of Wm Metzgar D.L.C. #50  
N 89° 39' E 47.307 chs. and Hwy.

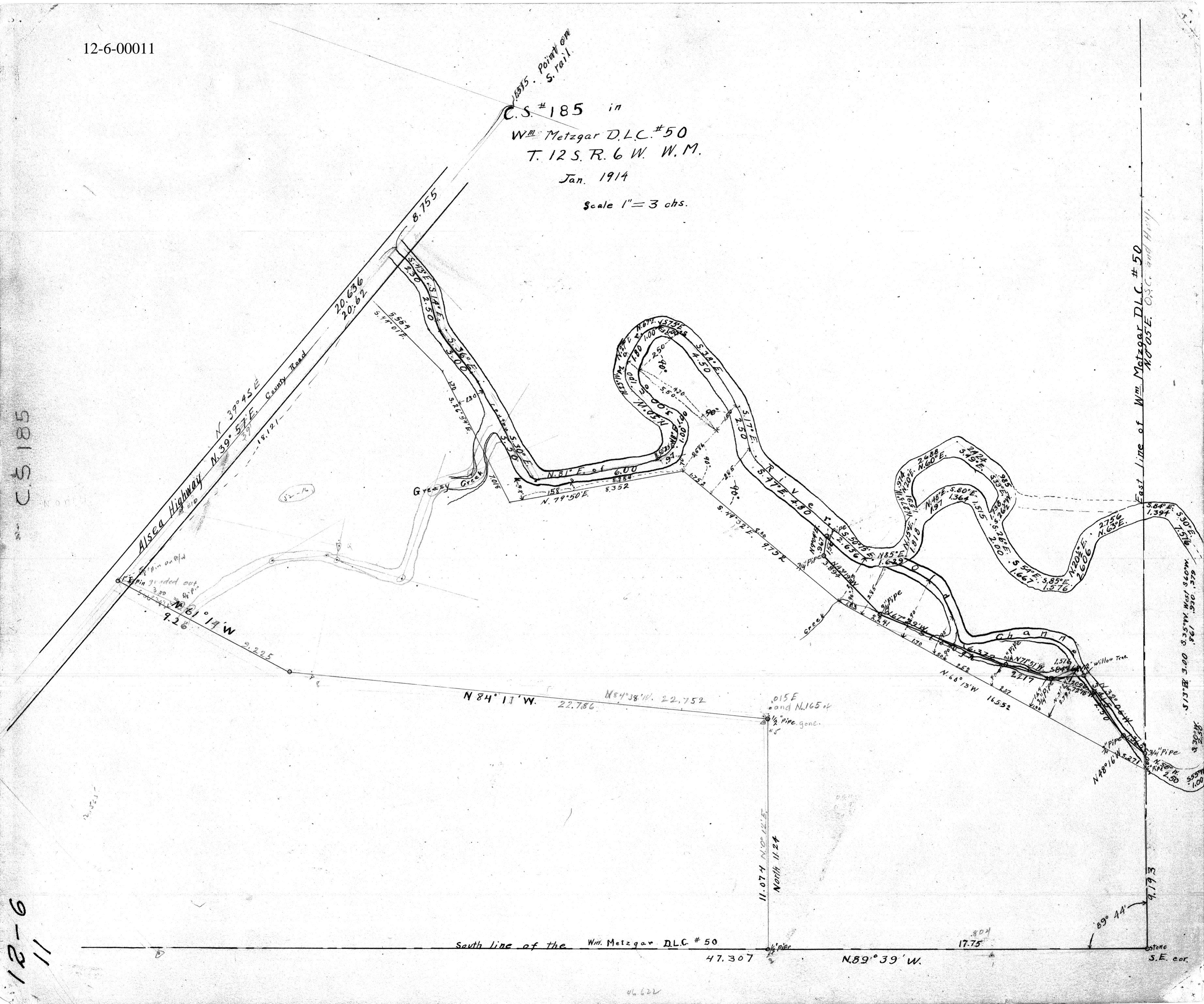
12-6-00011

C.S. #185 in  
Wm. Metzgar D.L.C. #50  
T. 12 S. R. 6 W. W.M.  
Jan. 1914

Scale 1" = 3 chs.

C.S. 185

12-6  
11



East line of Wm. Metzgar D.L.C. #50  
N. 05° E. O.S.C. and H.W.M.

9.193

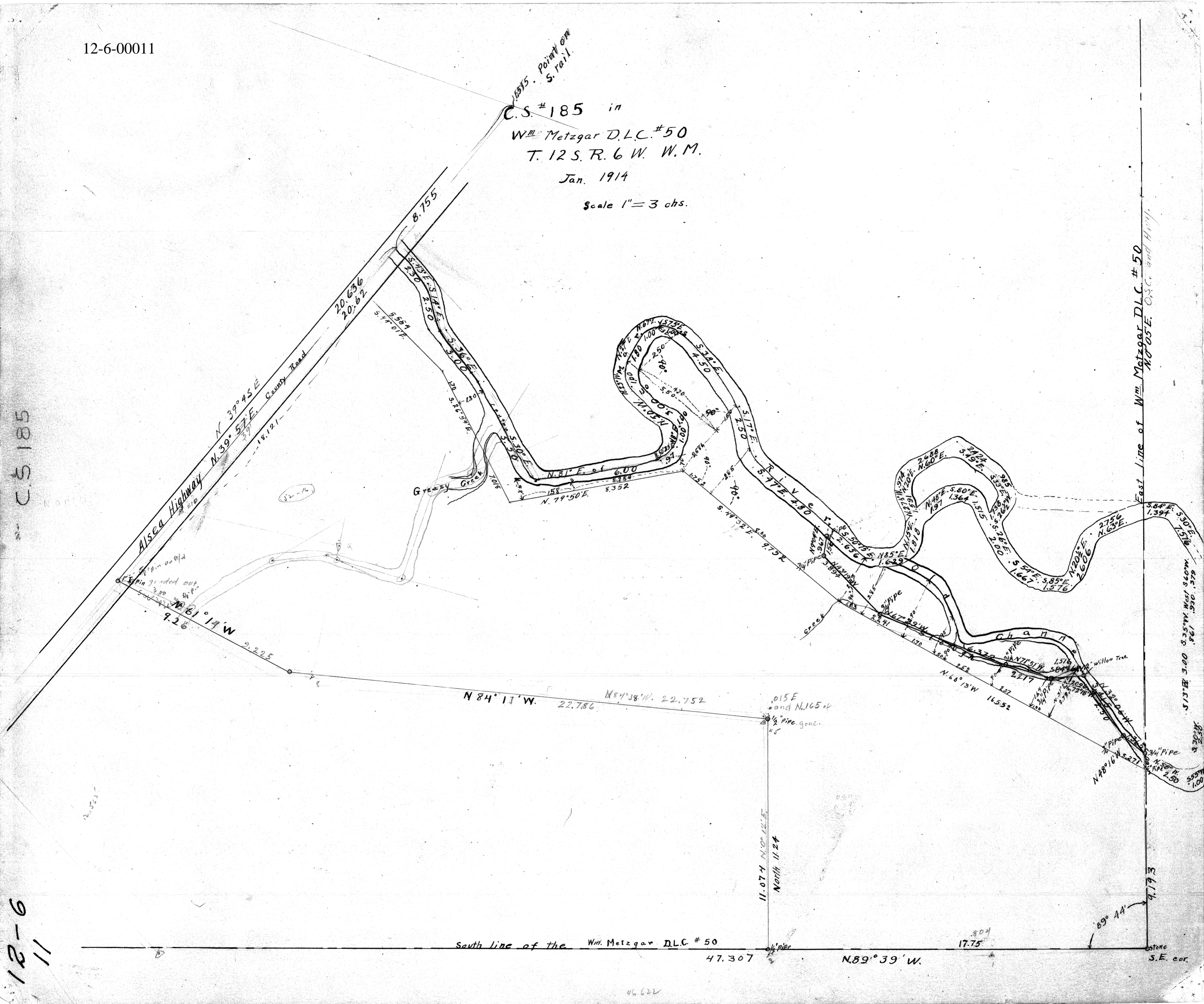
stone S.E. cor

C.S. #185 in  
Wm. Metzgar D.L.C. #50  
T. 12 S. R. 6 W. W.M.  
Jan. 1914

Scale 1" = 3 chs.

C.S. 185

12-6  
11



East line of Wm. Metzgar D.L.C. #50  
N. 05° E. O.S.C. and H.W.I.

9.193

Stone S.E. cor