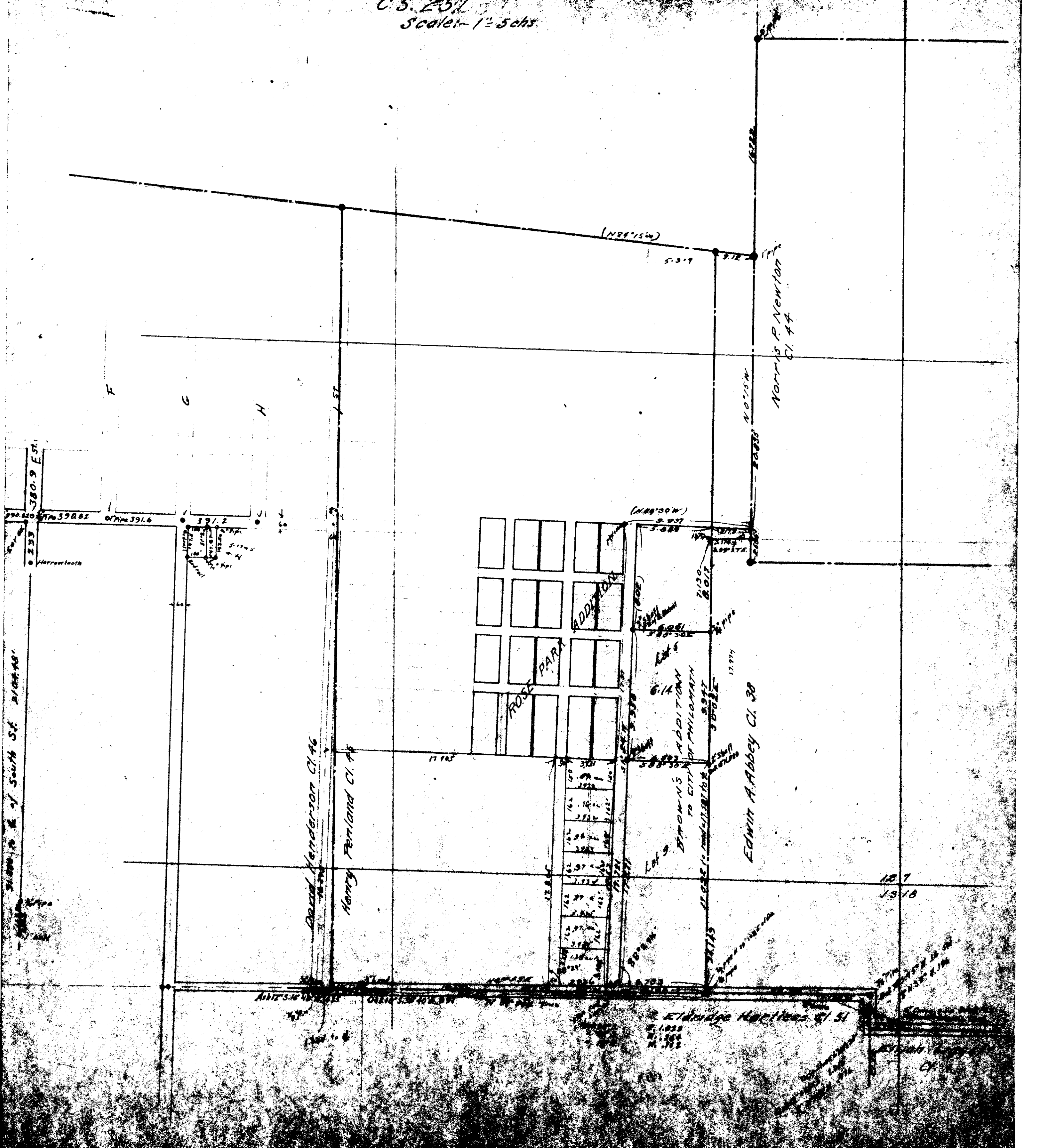


00015

PHILOMATH
C.S. 257
Scale - 1" = 5 chs.



3000 ft E of South St 21044.40'

380.9 E.S.

Harrowtooth

David Henderson Cl. 46

Henry Penland Cl. 45

ROSE PARK

ADDITION

6.14 ADDITIONAL
BROWN'S ADDITION
TO CITY OF PHILOMATH

Edwin A. Abbey Cl. 30

Norris P. Newton
Cl. 44

N 0° 15' W

(N 89° 15' W)

(W 89° 50' W)

187
1918

Edwin A. Abbey Cl. 51