

13

12

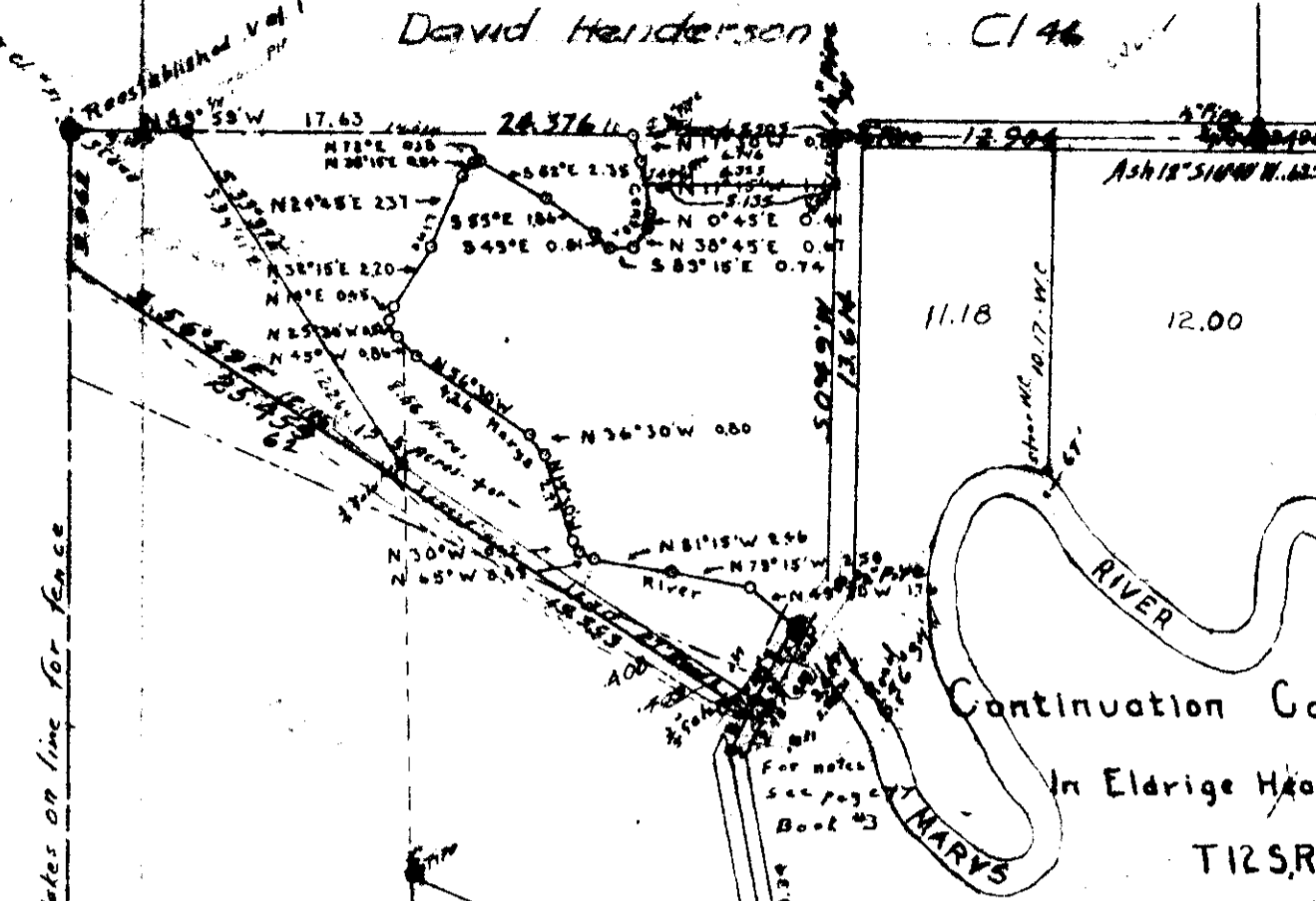
13

David Henderson C146

Henry Penland C145

43.45 to 3/4" gal. pipe, N.E. of C1.51
29.50 to 2" pipe, S.E. of C1.51
Oak 10°56'40"E.991 39.954 from N.E. cor.

Re-established Vail Tract



Continuation County Survey # 27

In Eldrige Hartless D.L.C. # 51

T12SR6-W-W.Mer. Deputy C.S.

Scale 1" = 60' chs

4-13

13

12/6

Oak 12°53'39"E.97 SM
" 12°50'24"W.77 "

Total	185.587	Acres
100' 2.7' Road	14.80	
100' 60' Road way	170.197	
Net	165.387	

10.697
1.560
12.137
2.45
129.647

42.595

7.9 (N 0-100)

40.55' W.

13

24

W. Cor. E. Hartless D.L.C. # 51

N 82° 55' E

Oak 12° 52' 48" E
Chickam 8° 58' 50" W. 831

12.077

Maple 8° 51' E. 891