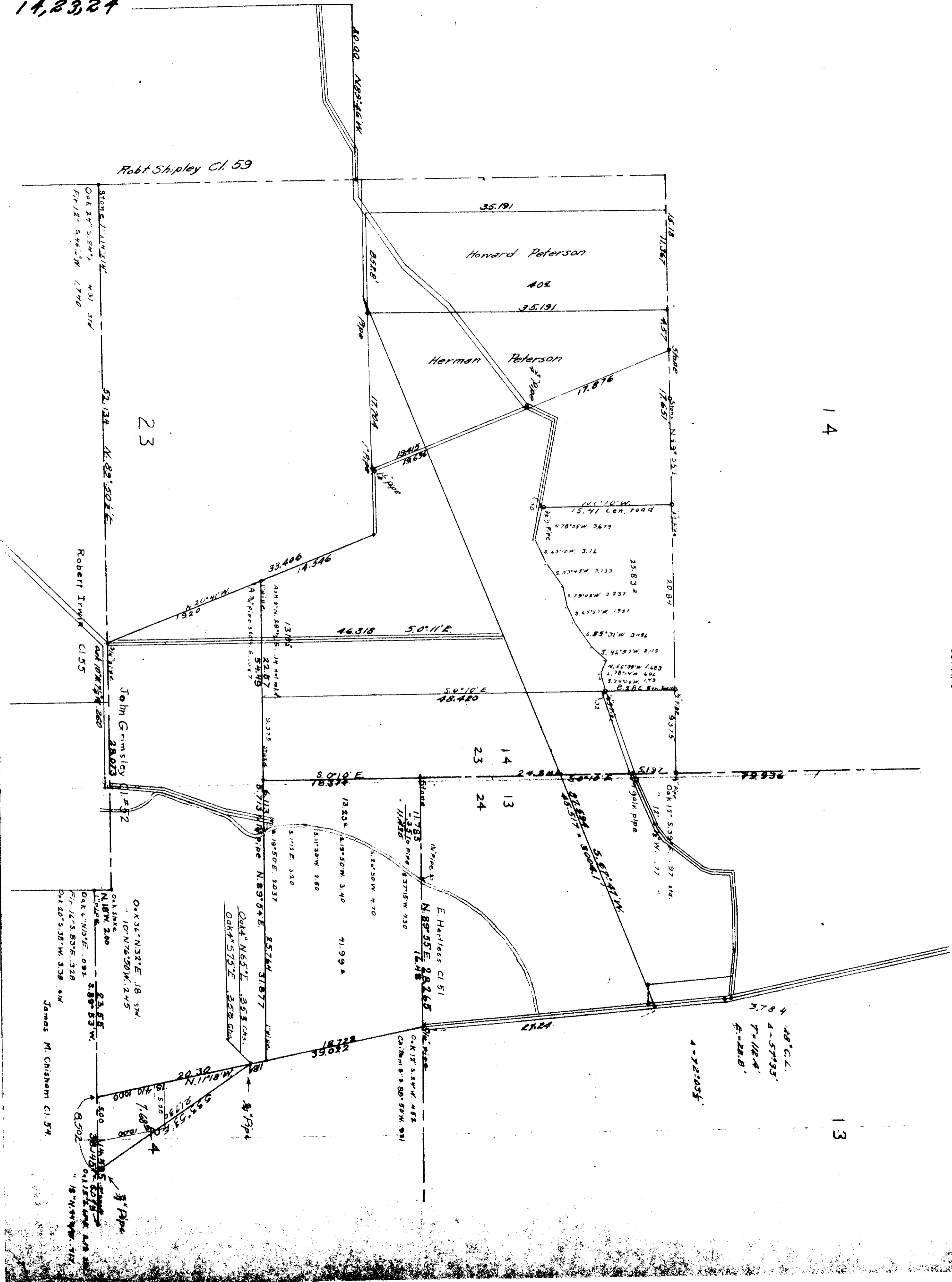


12-6
14,23,24

00022

C.5 267



COUNTY SURVEY #267
 John Grimsley Cl. 52
 Secs. 14, 23 & 24 T. 12S. R. 6 W. W. 11. Mer.
 Scale 1" = 80 ft.
 W.G. Galloway CS.
 Dec. 14, 1917.

Made For
 O. Alford
 Dr. C. H. Newth

14

13

23

23

14

13

24

Robt. Shipley Cl. 59

Howard Peterson

Herman Peterson

Robert Irwin Cl. 55

John Grimsley Cl. 52

E. Hallless Cl. 51

James M. Chisham Cl. 54

20° C. L.
 4-57'33"
 7-112'4"
 4-22'8"

4-72-00'

Stone 2 1/2" diam. 1740
 Oak 2 1/2" S. 8 1/2" W. 431 5/8
 5 1/2" 12" S. 46 1/2" W. 1740

Stone 2 1/2" diam. 1740
 Oak 2 1/2" S. 8 1/2" W. 431 5/8
 5 1/2" 12" S. 46 1/2" W. 1740

Stone 2 1/2" diam. 1740
 Oak 2 1/2" S. 8 1/2" W. 431 5/8
 5 1/2" 12" S. 46 1/2" W. 1740

Oak 3 1/2" N. 32° E. 18 5/8
 10" N. 76° 50' W. 2 1/2
 Oak 3 1/2" N. 32° E. 18 5/8
 10" N. 76° 50' W. 2 1/2

Oak 3 1/2" N. 32° E. 18 5/8
 10" N. 76° 50' W. 2 1/2
 Oak 3 1/2" N. 32° E. 18 5/8
 10" N. 76° 50' W. 2 1/2

Oak 3 1/2" N. 32° E. 18 5/8
 10" N. 76° 50' W. 2 1/2
 Oak 3 1/2" N. 32° E. 18 5/8
 10" N. 76° 50' W. 2 1/2