

C.S. No's. 100 & Part of 100

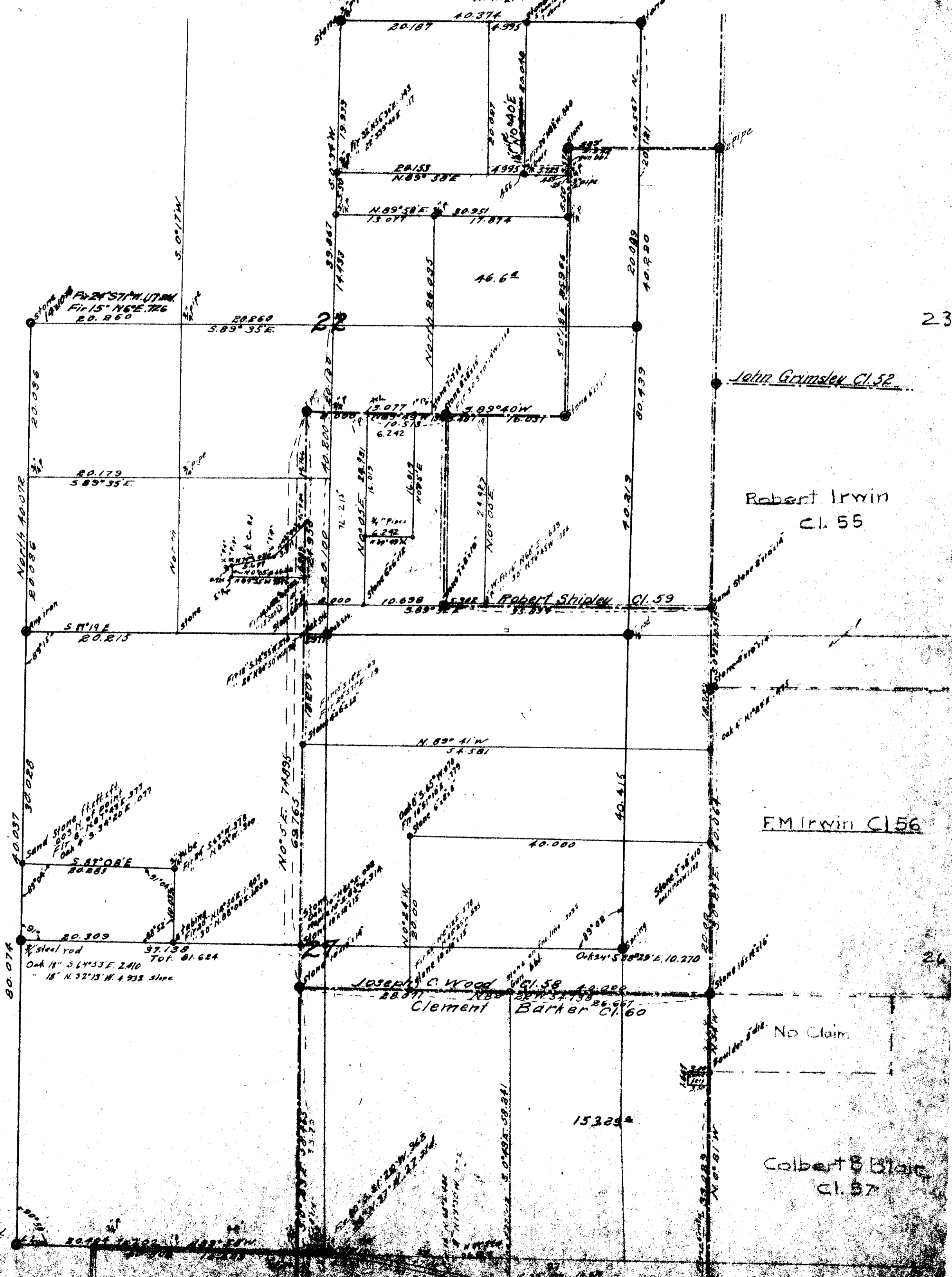
Sec. 22 & 27. Cl. 58, 59, & Part 60

T. 125., R. 6 W., W.M.

Scale: 1 in. = 10 chs.

Platted Mar. 17, 1822

W.M.L.



21

23

28

26

Field Note, 29 5/4
 24 331 E. 17
 15 340 W. 27
 16 11 W. 12 5/4