

13-6
11, 12, 13, 14

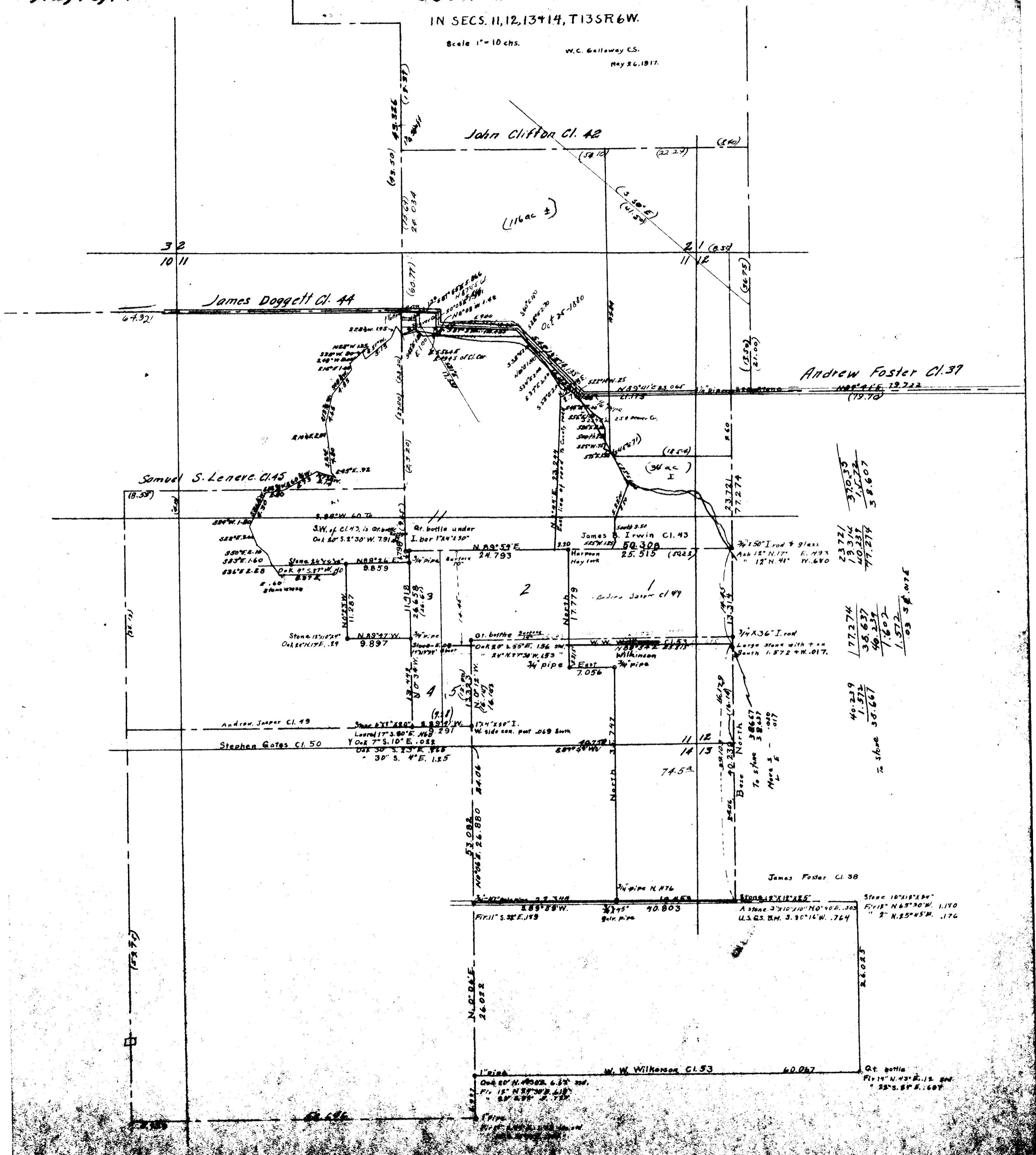
00006

COUNTY SURVEY #256

Made For E.J. Dunn

IN SECS. 11, 12, 13 & 14, T13SR6W.

Scale 1" = 10 chs.
W.C. Galloway C.S.
May 26, 1917.



John Clifford Cl. 42

James Doggett Cl. 44

Samuel S. Leneve Cl. 45

Andrew Foster Cl. 37

James S. Irwin Cl. 43

Andrew Jasper Cl. 49

Andrew Jasper Cl. 49

Stephen Gates Cl. 50

James Foster Cl. 38

W.W. Wilkinson Cl. 53

370.35
15.72
58.607

23.721
19.314
40.237
77.274
58.607

177.274
38.637
40.237
1.602
1.572
.03 58.076

40.239
1.572
38.667
74.52

26.025
26.025
26.025
26.025

90.803
90.803
90.803
90.803

60.067
60.067
60.067
60.067

26.025
26.025
26.025
26.025

26.025
26.025
26.025
26.025