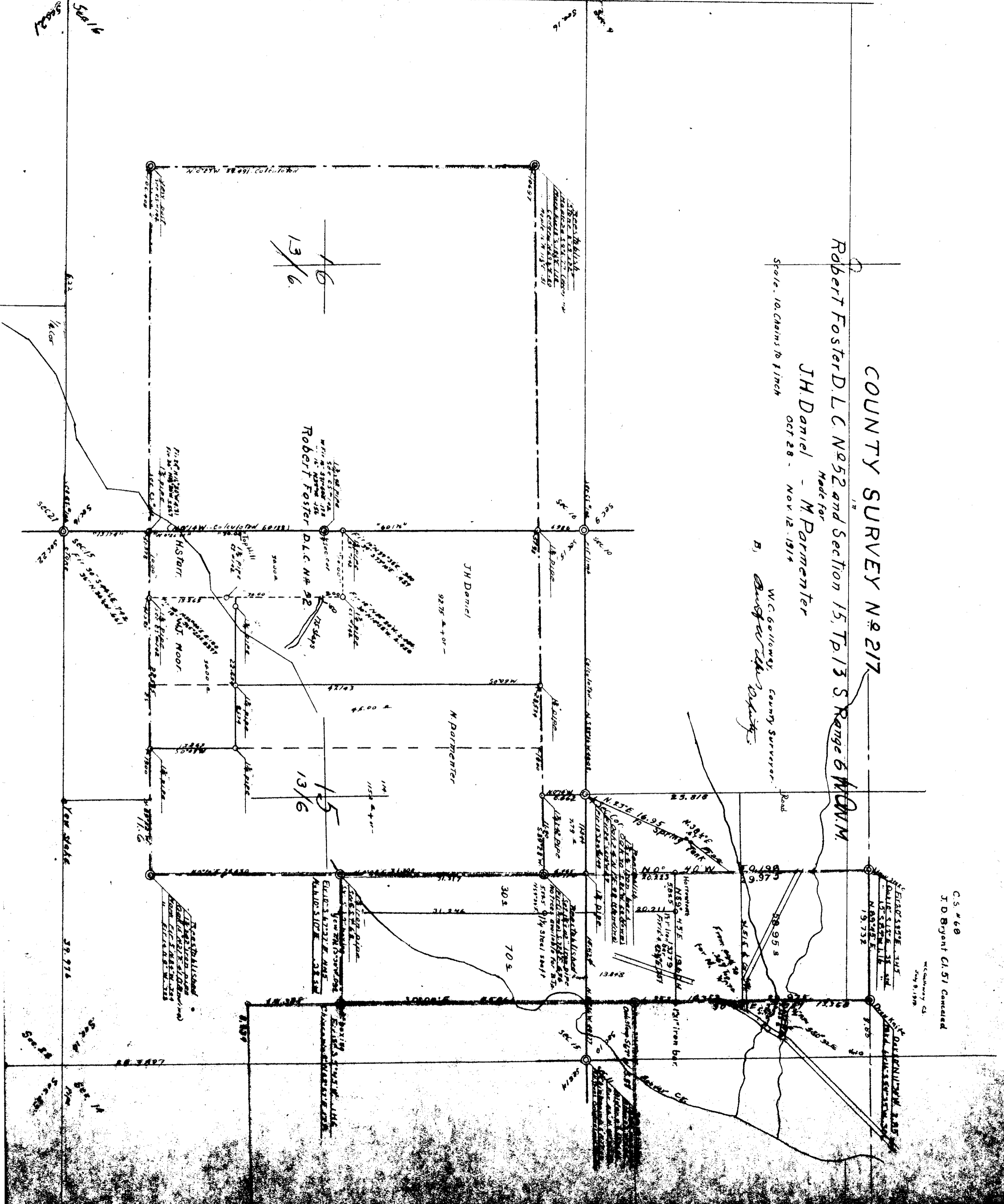


13-6 00012

C.S. 217
1" = 10 chs.

15.16
56.16



COUNTY SURVEY NO 217
 Robert Foster D.L.C. No 92 and Section 15, T. 13 S. Range 6 W. 21 N.M.
 Made for
 J.H. Daniel - M. Parmenter
 OCT 28 - NOV 12 1914
 Scale. 10. Chains to 1 inch
 W.C. Galloway, County Surveyor.
 B. *Burgess* Deputy.

C.S. # 60
 J.D. Bryant C.L. 51 Corrected
 McCammy Co.
 May 9, 1929