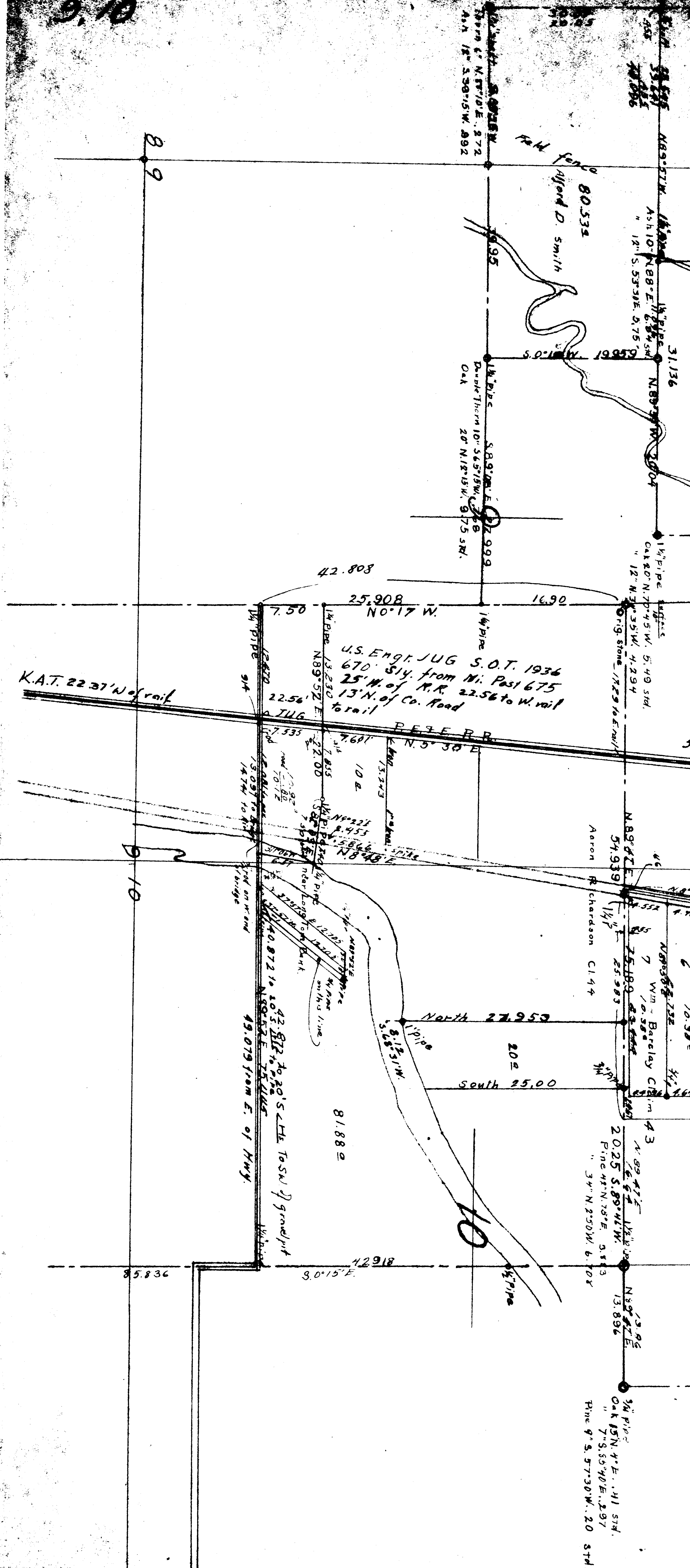


800000  
11-9  
9.10



K.A.T. 22.37' N of rail

U.S. ENGR. JUG S.O.T. 1936  
670' S14. from Mi. Post 675  
25' N. of R.R. 22.56 to W. rail  
13' N. of Co. Road to rail

P.E.F. R.R.  
N. 5° 30' E

North 27.953  
South 25.00

42.812 to 20'S. THE TOSN of gravel pit  
49.079 from E. of HWY.

89

910

10