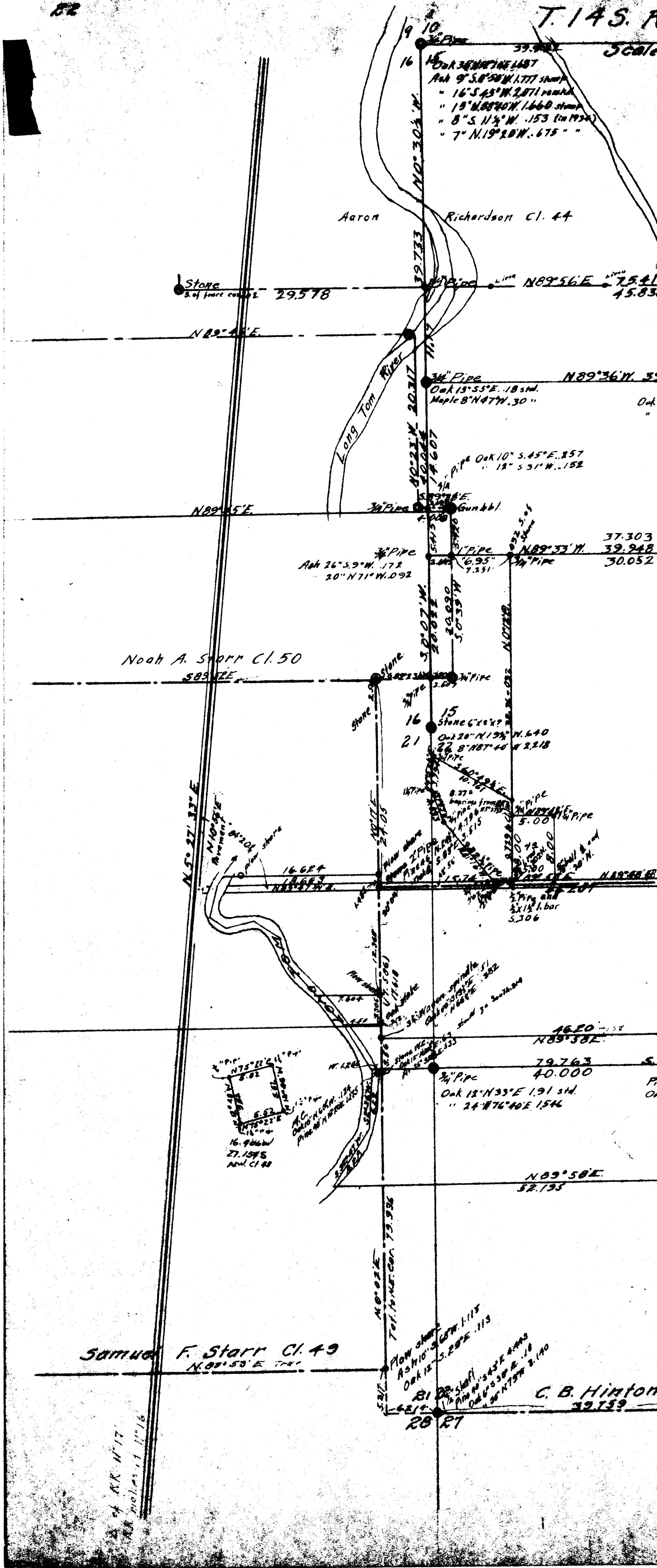


10-5
82

00016

C. S. T. 145. A



Aaron Richardson Cl. 44

Stone 29.578 N 89° 56' E 75.41 45.83

N 89° 45' E

3/4" Pipe N 89° 36' W 39.948
Oak 15° 55' E .18 stn.
Maple 8° N 47° W .30 "

N 89° 45' E

3/4" Pipe Oak 10° S 45° E .857
" 18° S 51° W .152
3/4" Pipe N 89° 33' W 37.303
3/4" Pipe N 89° 33' W 39.948
3/4" Pipe 30.052

Noah A. Starr Cl. 50
S 89° 37' E

16 15
21 Stone 6' x 4' N 64° 0'
Oak 20° N 19° W 6.40
" 8° N 87° 40' W 2.18

N 50° 27' 33" E

"P.P." N 75° 22' 14" E 8.82
N 120° 0' 0" W 16.966
27.1545
Nov. Cl. 40

1620 N 89° 38' E 79.763
40.000

Oak 12° N 35° E 1.91 stn.
" 24° N 76° 40' E 1.546

N 89° 58' E 52.193

Samuel F. Starr Cl. 49
N 89° 55' E 74.4

Flow share
Ash 10° S 20° E 1.115
Oak 12° S 20° E .115
81 22' shaft
" 10' shaft
Oak 6° S 30° E .18
" 30° N 75° W 2.140

C. B. Hinton
39.159

RR miles 11° 16'