

17
23,21,26 00019

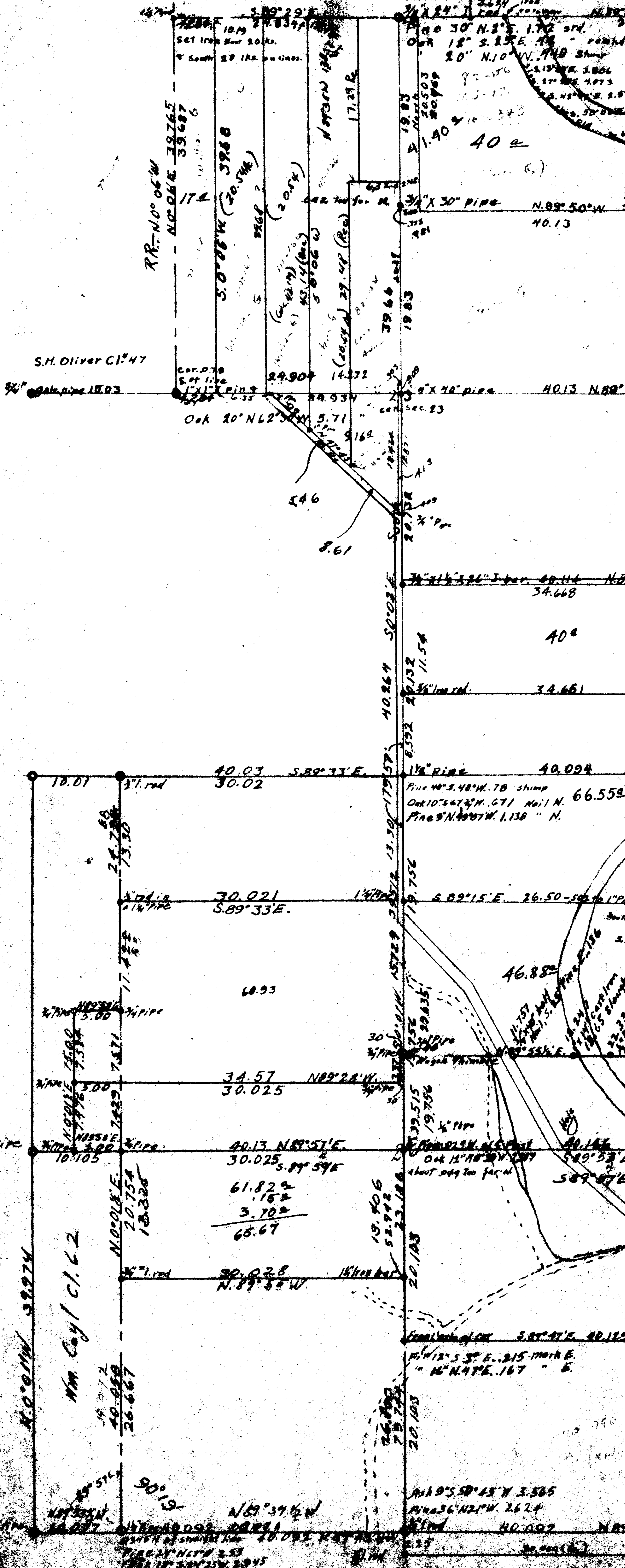
COUNTY
TINER

Set wagon thimble for SE cor.
Aah 8° S. 20° W. 11.5
18° S. 30° W. 10.5

Scale 1" = 100'

Joseph M. Lafferty Cl. 46

Clear is
0.82 2 of sec
11.00
2.54 iron
rod
2.54
1.40



S.H. Oliver Cl. 47

RR - N 0° 06' W

Mr. Coyl Cl. 62

N 0° 01' W 39.974

Set Iron Rod 20 lbs.
South 20 lbs. on lines.

30° N 2° E 1.72
Oak 18° S 25° E 4.78
20° N 10° W 1.40
2.54 iron rod
2.54
1.40

Oak 20° N 62° W 5.71

3/4" x 30" pipe N 89° 50' W
40.13

3/4" x 40" pipe 40.13 N 89°

3/4" x 36" pipe 40.114 N 89°

40°

3/4" low rod 34.661

1 1/2" pipe 40.094

Pine 40° S 40° W 7.0 stump
Oak 10° 44' 24" W 6.71 Nail N.
Pine 5° N 49° 07' W 1.138 " N.

6 89° 15' E 26.50 - 50.10 1 1/2"

46.88°

60.93

34.57 N 89° 28' W
30.025

40.13 N 89° 51' E
30.025 5.89° 59' E

61.82°
.153
3.702
65.67

30.028 N 89° 50' W

5.89° 47' E 40.122

16° W 12° 53' E 2.15 mark E.
16° N 47° E 1.67 " E

Aah 9° S 50° 45' W 3.565
Pine 36° N 21° W 2.624

40.002

14-5
23, 25, 26

14-5-00017

COUNTY SURVEY #254
T14S. R.5W. W. M.

Made for
Albert Goracke

Set wagon thimble for S.E. cor.
Ash 8° S. 20° W. 165 chs.
" 12° S. 80° W. 403 "

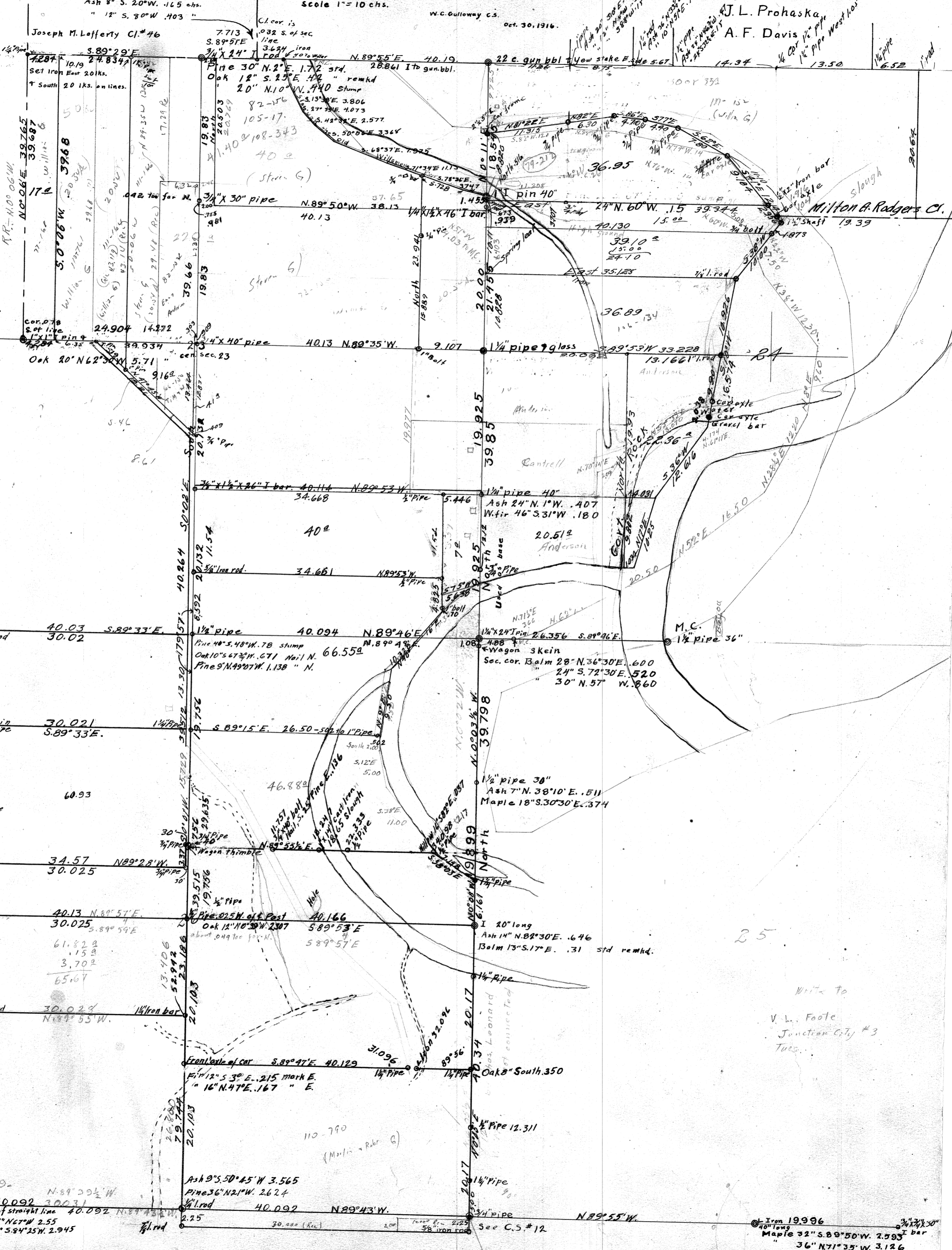
Scale 1" = 10 chs.

W.C. Galloway c.s.

Oct. 30, 1916.

J.L. Prohaska

A.F. Davis



Joseph M. Lafferty Cl. #46
S.H. Oliver Cl. #47
M.M. Coyle Cl. #62

Milton A. Rodgers Cl.
M.C.

Write to
V.L. Foote
Junction City #3
Tues.

Iron 19996
40' long
Maple 32" S. 89° 50' W. 2.593
" 36" N. 71° 35' W. 3.126