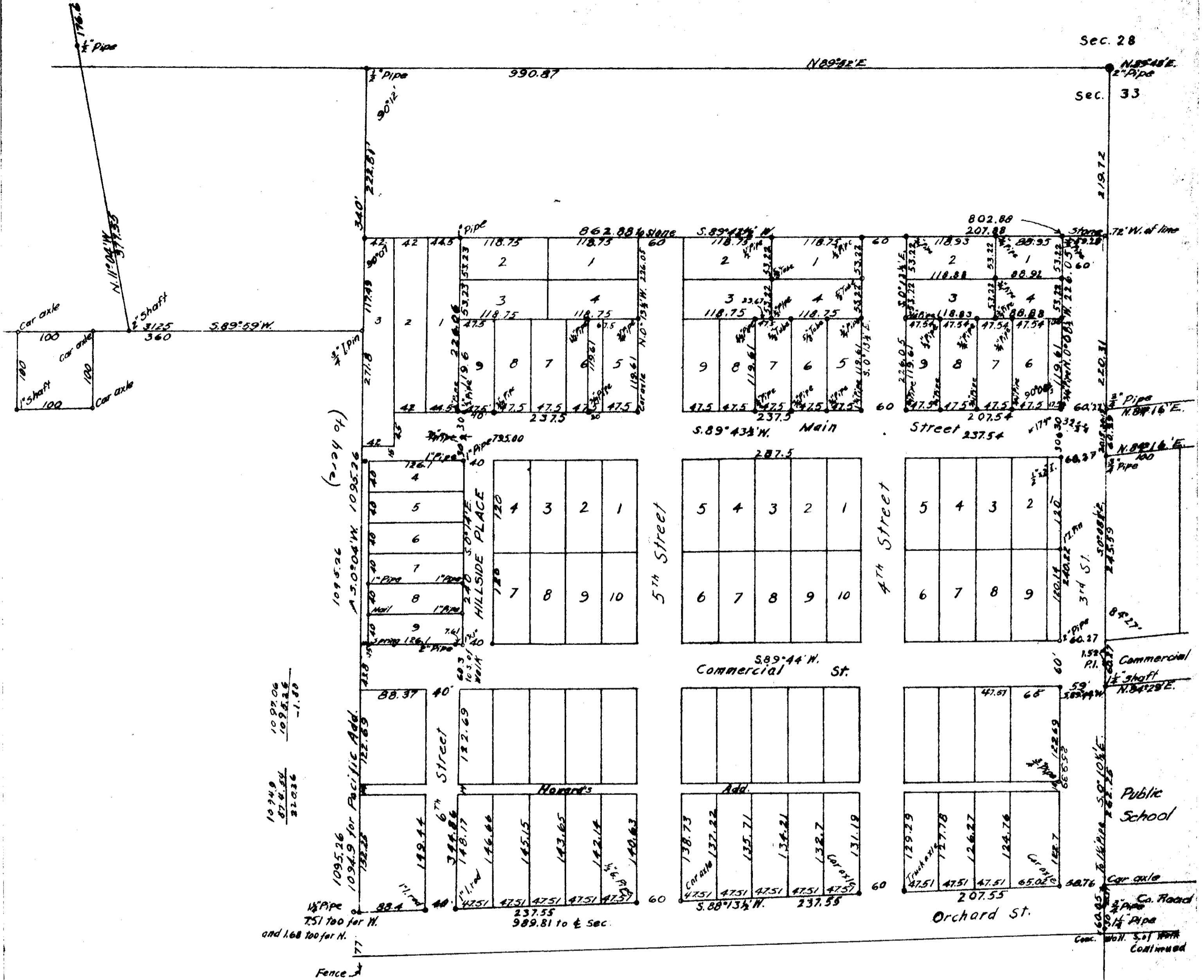


14-5 00021
33

MONROE
1" = 100'

Sec. 28

Sec. 33



10949
876.81
22036

109206
1096.26
-1.90

1095.26
1094.9 for Pacific Add.
132.25

1/2 Pipe
751 700 for W.
and 168 700 for N.

Fence

1095.26
1094.9 for Pacific Add.
132.25

1/2 Pipe
751 700 for W.
and 168 700 for N.

Fence

1095.26
1094.9 for Pacific Add.
132.25

1/2 Pipe
751 700 for W.
and 168 700 for N.

Fence

1095.26
1094.9 for Pacific Add.
132.25

1/2 Pipe
751 700 for W.
and 168 700 for N.

Fence

1095.26
1094.9 for Pacific Add.
132.25

1/2 Pipe
751 700 for W.
and 168 700 for N.

Fence

1095.26
1094.9 for Pacific Add.
132.25

1/2 Pipe
751 700 for W.
and 168 700 for N.

Fence

1095.26
1094.9 for Pacific Add.
132.25

1/2 Pipe
751 700 for W.
and 168 700 for N.

Fence

1095.26
1094.9 for Pacific Add.
132.25

1/2 Pipe
751 700 for W.
and 168 700 for N.

Fence

1095.26
1094.9 for Pacific Add.
132.25

1/2 Pipe
751 700 for W.
and 168 700 for N.

Fence

1095.26
1094.9 for Pacific Add.
132.25

1/2 Pipe
751 700 for W.
and 168 700 for N.

Fence

1095.26
1094.9 for Pacific Add.
132.25

1/2 Pipe
751 700 for W.
and 168 700 for N.

Fence

1095.26
1094.9 for Pacific Add.
132.25

1/2 Pipe
751 700 for W.
and 168 700 for N.

Fence

1095.26
1094.9 for Pacific Add.
132.25

1/2 Pipe
751 700 for W.
and 168 700 for N.

Fence

1095.26
1094.9 for Pacific Add.
132.25

1/2 Pipe
751 700 for W.
and 168 700 for N.

Fence

1095.26
1094.9 for Pacific Add.
132.25

1/2 Pipe
751 700 for W.
and 168 700 for N.

Fence

1095.26
1094.9 for Pacific Add.
132.25

1/2 Pipe
751 700 for W.
and 168 700 for N.

Fence

1095.26
1094.9 for Pacific Add.
132.25

1/2 Pipe
751 700 for W.
and 168 700 for N.

Fence

1095.26
1094.9 for Pacific Add.
132.25

1/2 Pipe
751 700 for W.
and 168 700 for N.

Fence

1095.26
1094.9 for Pacific Add.
132.25

1/2 Pipe
751 700 for W.
and 168 700 for N.

Fence

1095.26
1094.9 for Pacific Add.
132.25

1/2 Pipe
751 700 for W.
and 168 700 for N.

Fence

1095.26
1094.9 for Pacific Add.
132.25

1/2 Pipe
751 700 for W.
and 168 700 for N.

Fence

1095.26
1094.9 for Pacific Add.
132.25

1/2 Pipe
751 700 for W.
and 168 700 for N.

Fence

1095.26
1094.9 for Pacific Add.
132.25

1/2 Pipe
751 700 for W.
and 168 700 for N.

Fence

1095.26
1094.9 for Pacific Add.
132.25

1/2 Pipe
751 700 for W.
and 168 700 for N.

Fence

1095.26
1094.9 for Pacific Add.
132.25

1/2 Pipe
751 700 for W.
and 168 700 for N.

Fence

1095.26
1094.9 for Pacific Add.
132.25

1/2 Pipe
751 700 for W.
and 168 700 for N.

Fence

1095.26
1094.9 for Pacific Add.
132.25

1/2 Pipe
751 700 for W.
and 168 700 for N.

Fence

1095.26
1094.9 for Pacific Add.
132.25

1/2 Pipe
751 700 for W.
and 168 700 for N.

Fence

1095.26
1094.9 for Pacific Add.
132.25

1/2 Pipe
751 700 for W.
and 168 700 for N.

Fence

1095.26
1094.9 for Pacific Add.
132.25

1/2 Pipe
751 700 for W.
and 168 700 for N.

Fence

1095.26
1094.9 for Pacific Add.
132.25

1/2 Pipe
751 700 for W.
and 168 700 for N.

Fence

1095.26
1094.9 for Pacific Add.
132.25

1/2 Pipe
751 700 for W.
and 168 700 for N.

Fence