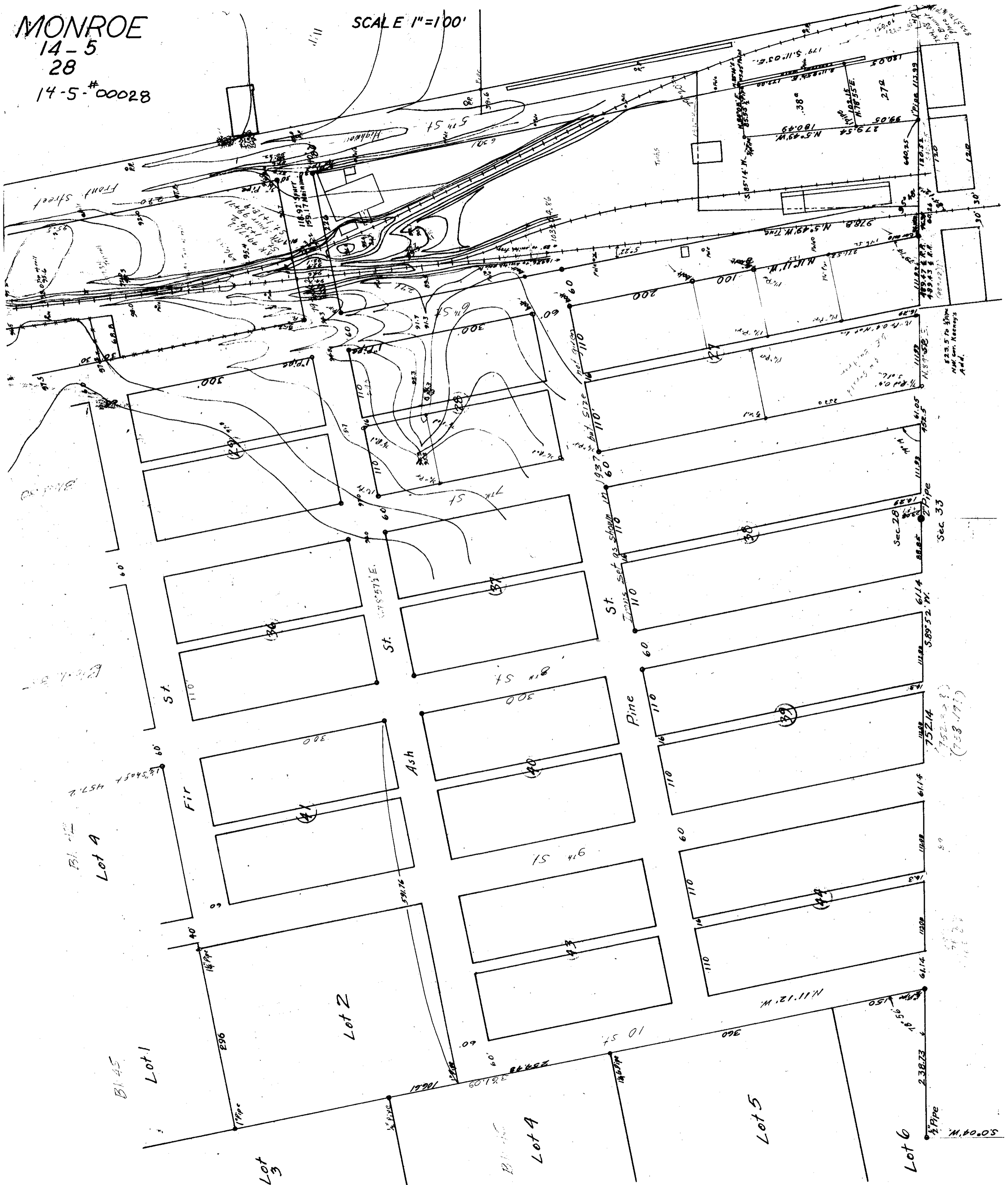


MONROE

14-5
28

14-5-#00028

SCALE 1"=100'



Bl. 42
Lot A

Bl. 45
Lot 1

Lot 3

Lot 2

Bl. 46
Lot A

Lot 5

Lot 6

(752-528)
(753-171)

122.5 to 130
N.W. corner Keene's
Add.

50'0.4" W.
1/2" Pipe

Sec. 28
1/2" Pipe

Sec. 33
1/2" Pipe

St.
Irrig. set as shown in 1937

Pine

St. W. 55' 7 1/2" E.

Ash

Fir

St.

Front Street

7th St

8th St

10 St

5th St

N. 11.12' W.

N. 5.49' W. T. 1/4

N. 11.11' W.

N. 5.49' W. T. 1/4

N. 11.11' W.

N. 5.49' W. T. 1/4

N. 11.11' W.

N. 5.49' W. T. 1/4

N. 11.11' W.

N. 5.49' W. T. 1/4

N. 11.11' W.

N. 5.49' W. T. 1/4

N. 11.11' W.

N. 5.49' W. T. 1/4

N. 11.11' W.

N. 5.49' W. T. 1/4

N. 11.11' W.

N. 5.49' W. T. 1/4

N. 11.11' W.

N. 5.49' W. T. 1/4

N. 11.11' W.

N. 5.49' W. T. 1/4

N. 11.11' W.

N. 5.49' W. T. 1/4

N. 11.11' W.

N. 5.49' W. T. 1/4

N. 11.11' W.

N. 5.49' W. T. 1/4

N. 11.11' W.

N. 5.49' W. T. 1/4

N. 11.11' W.

N. 5.49' W. T. 1/4