

14-6 00011

C.S. 210

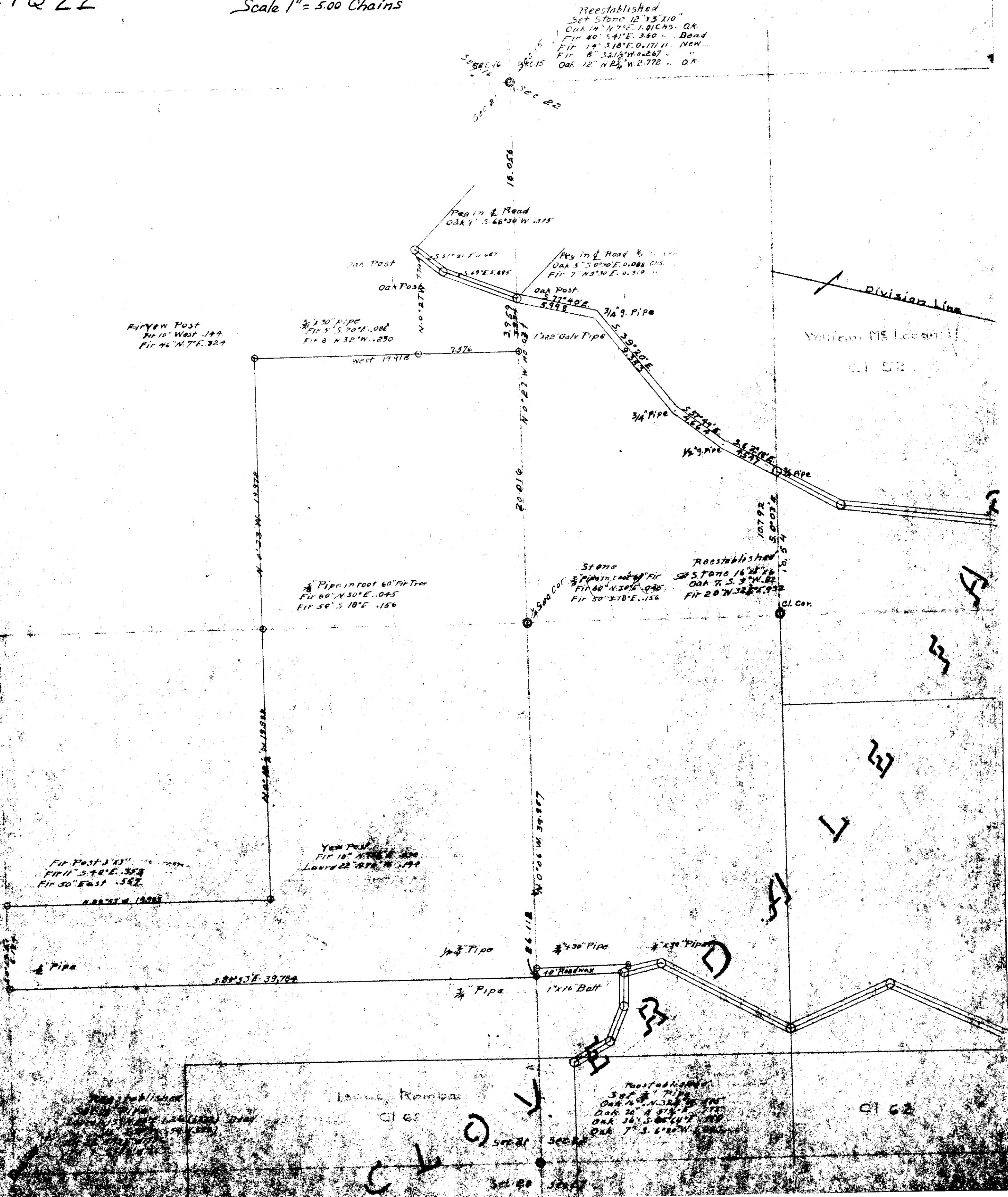
T. W. Turner (Alpine Sawmill)

Section 21 T14SR6W Will. Mer. Benton County, Ore.

21822

Scale 1" = 500 Chains

Reestablished
Set Stone 12"x3"x10"
Oak 14" N 71° E 1.01 Chs. OK
Fir 40" S 41° E 3.60 " Dead
Fir 14" S 18° E 0.171 " New
Fir 8" S 21 1/2° W 0.267 " "
Oak 12" N 2 1/4° W 2.772 " OK



Fir & W Post
Fir 10" West 1.144
Fir 46" N 7° E 32.9

3/4" Pipe
Fir 5" S 70° E .086
Fir 8" N 32° W .250

Pipe in root 60" Fir Tree
Fir 60" N 30° E .045
Fir 50" S 18° E .156

Fir Post 3' 43"
Fir 11" S 44° E 35.3
Fir 30" East 58.2

Yew Post
Fir 10" N 71° E 1.01
Laurd 22" N 71° W 1.144

Reestablished
Set Stone 16"x8"x8"
Oak 7" S 3° W .82
Fir 20" N 32° E .932

Reestablished
Set Stone 12"x12"x12"
Oak 14" N 32° E .916
Oak 16" S 8° W .414
Oak 7" S 6° W .614

2162

Handwritten initials and numbers: 'C W O Y', '5000', '5000', '5000', '5000'