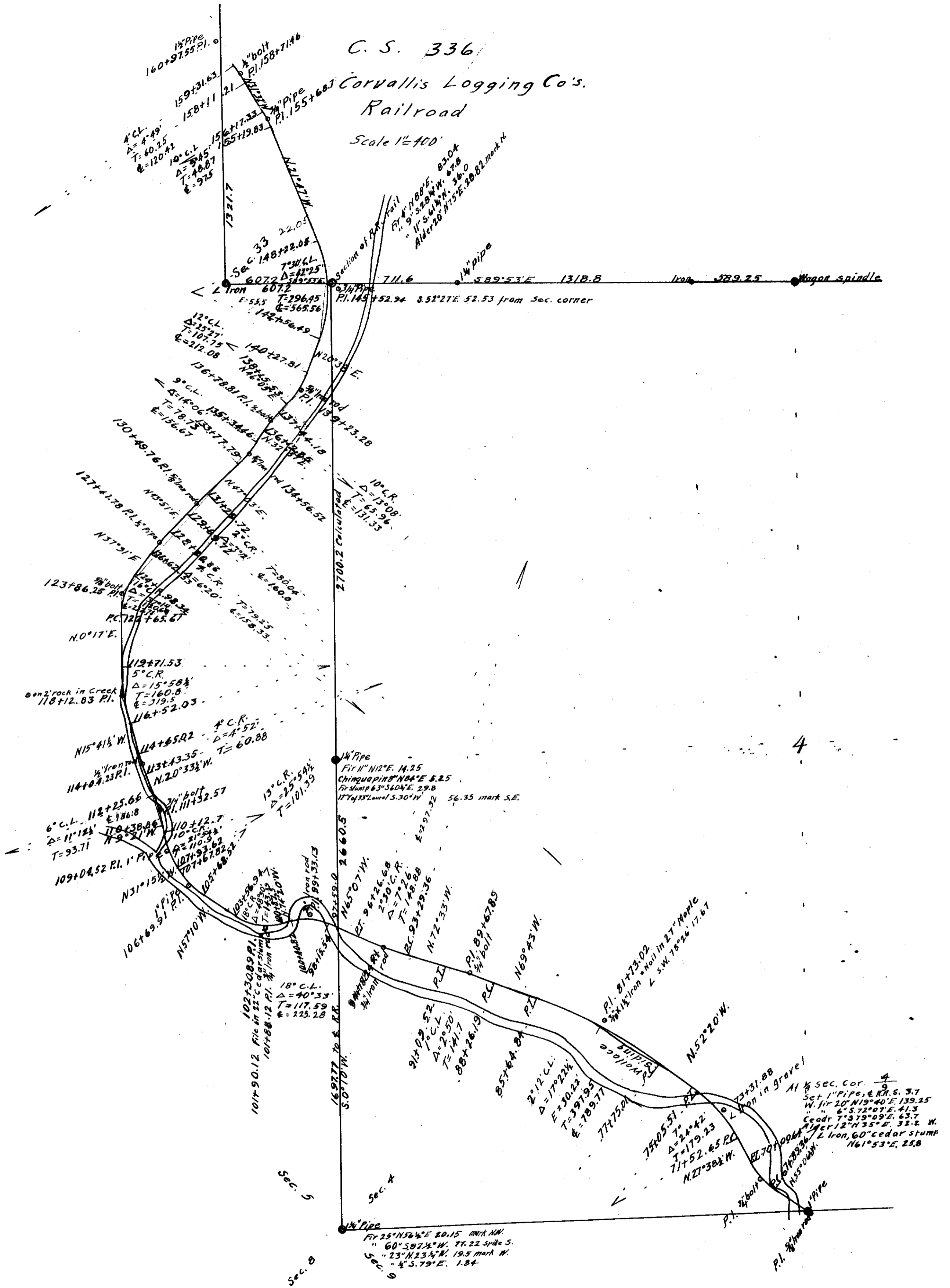


14-6-00023
485



C. S. 336
Corvallis Logging Co's
Railroad
Scale 1"=400'

4

Sec. 5
Sec. 4
Sec. 8
Sec. 9

1/4" Pipe
Ft. 25° N 56 1/2° E 20.15 mark NW.
" 60° S 87 1/2° W 77.22 Spide S.
" 23° N 23 1/4° W 19.5 mark W.
" 4° S 79° E 1.84

1 1/2 sec. cor. 4
Set 1" Pipe, E. R. S. 3.7
W. for 20° N 19° 40' E 139.25
" 6° S 72° 07' E 41.3
Cedar 7° 37° 09' E 63.7
" 12° N 35° E 31.2 W.
L. Iron, 60° cedar stump
N 61° 53' E, 23.8