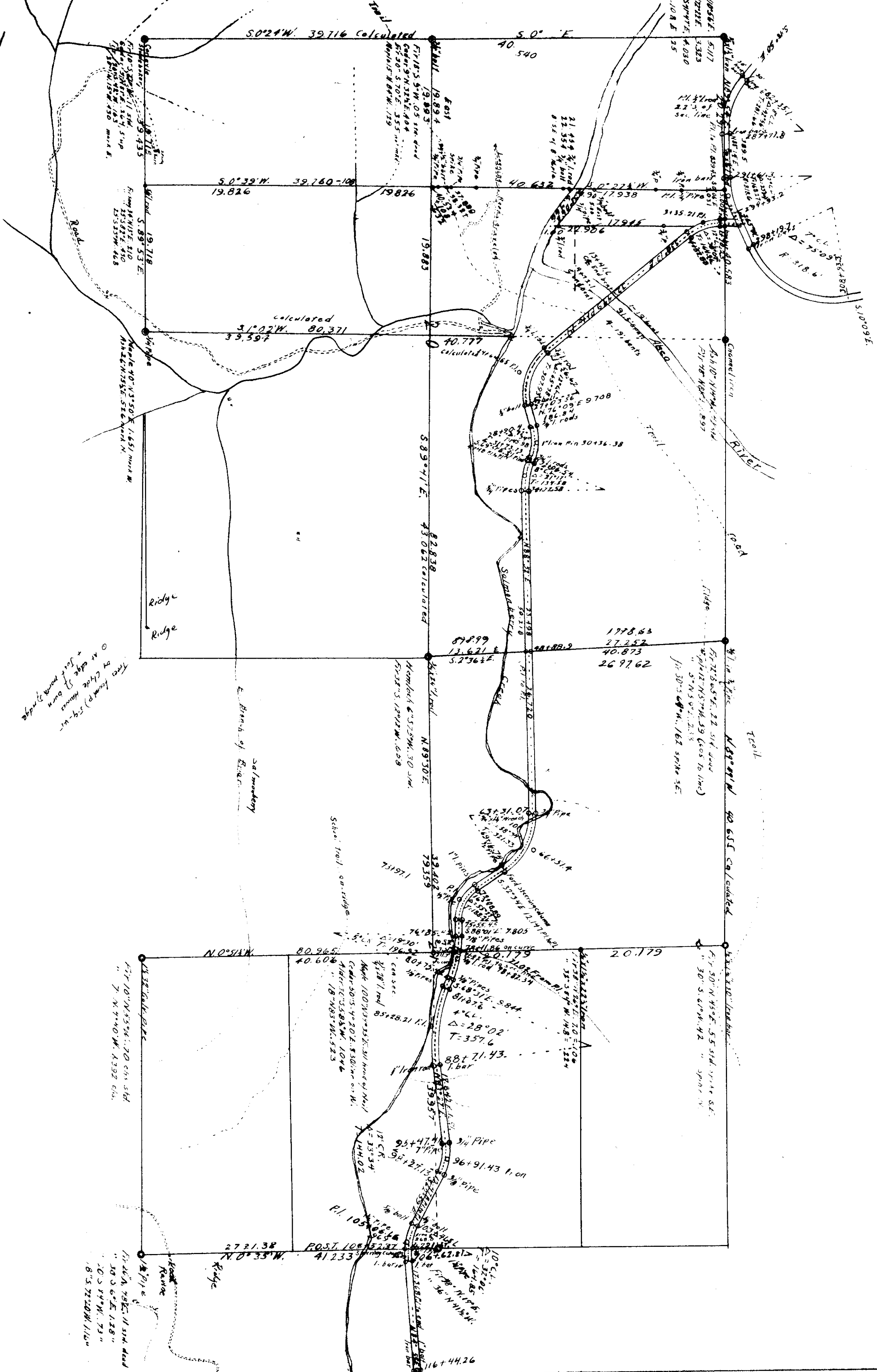


14-8 00008
20 & 21

C.S. 362



COUNTY SURVEY No 362

Scale 1/2 inch = 10 chs

W.C. Galloway C.S.
Dec. 1937

Three (3) farms P. 1-29-41
at edge of survey
+ full corner Spruce

Pl. 105
N. 0° 33' W. 41.233
1. bore

Pl. 105
N. 0° 33' W. 41.233
1. bore

1798.63
27.252
40.873
26.9762

Pl. 105
N. 0° 33' W. 41.233
1. bore

Pl. 105
N. 0° 33' W. 41.233
1. bore