

15-5 00004
3,4

COUNTY SURVEY No 226

MADE FOR

M. Wilhelm

IN

The Bridget Coffee Estate

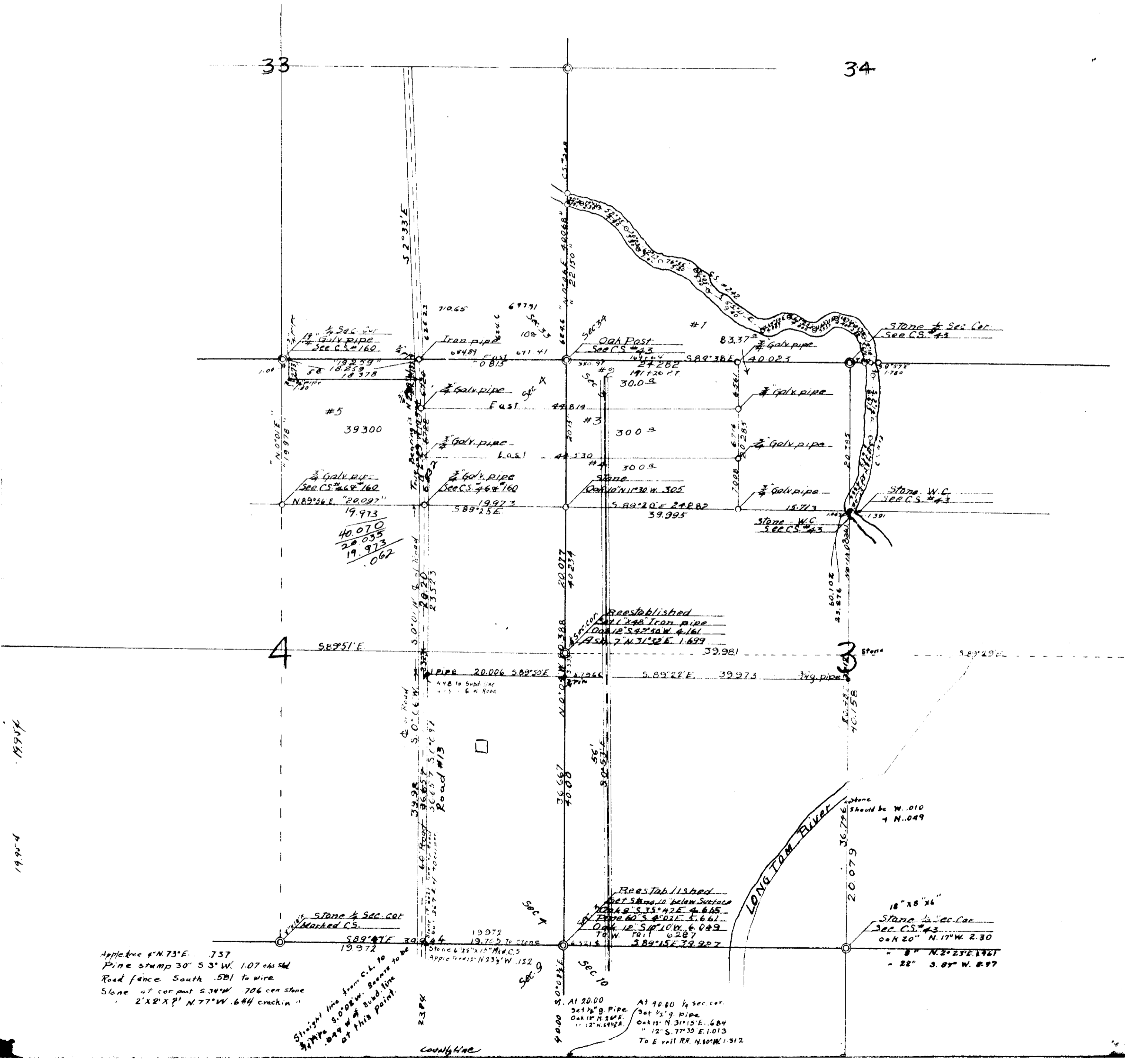
Section 34, T. 14 S., R. 5 W. And Sections 3 & 4, T. 15 S., R. 5 W., Will. Mer., Benton County Oregon

Scale 1"=10 chs

Sept 16, 1916

Field notes - Book 19 - Page 43-46

Deputy County Surveyor
Deputy County Surveyor



15-5

3,4

15-5-00004

COUNTY SURVEY No 226

MADE FOR

M. Wilhelm

IN

The Bridget Coffee Estate

Section 34, T. 14 S., R. 5 W. And Sections 3 & 4, T. 15 S., R. 5 W., Will. Mer., Benton County Oregon

Sept 16, 1916

Scale 1"=10 chs.

Field notes - Book 19 - Page 43-46

Burt Wilhelm
Deputy County Surveyor

