

County Survey #181 and #63

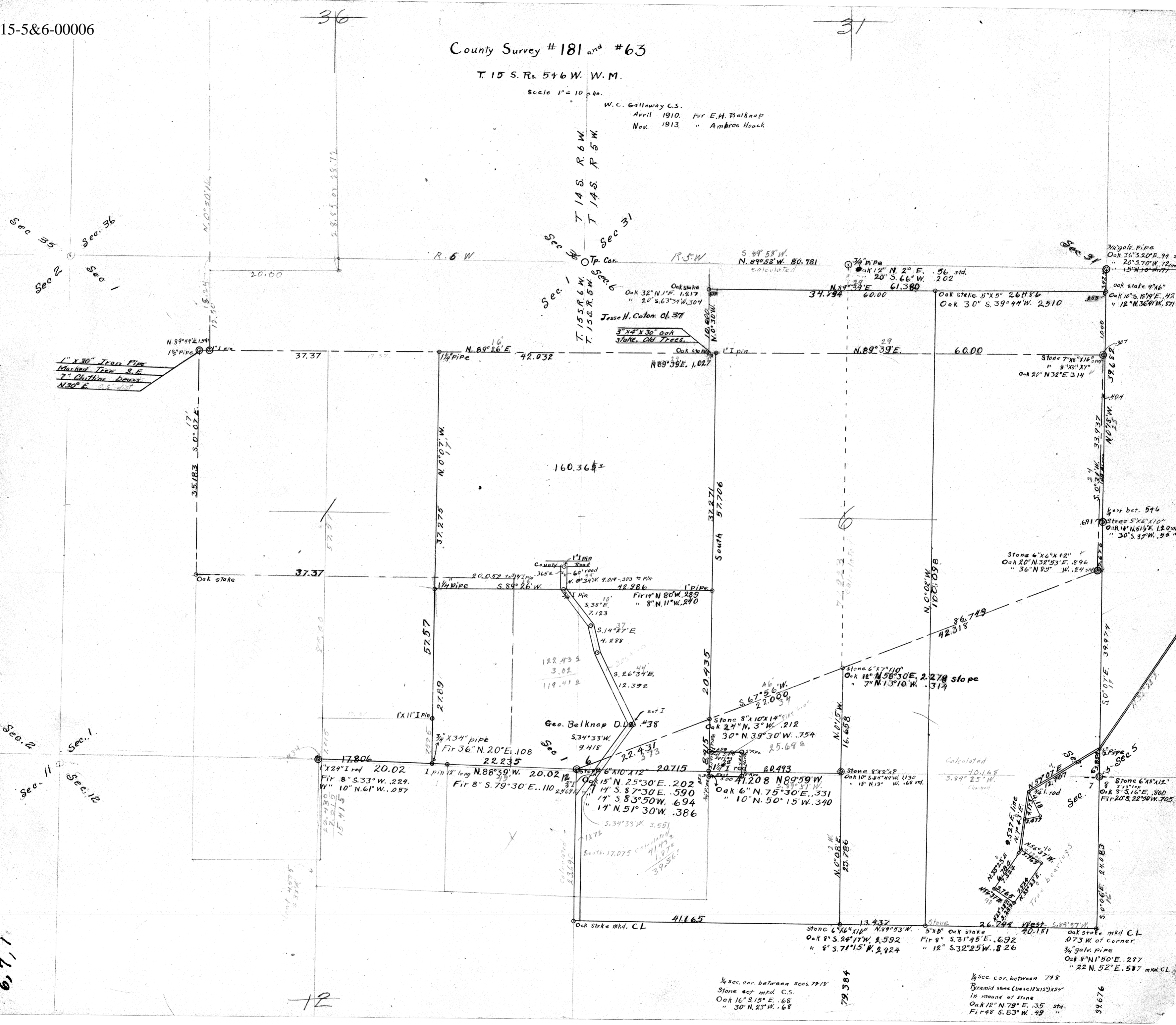
T. 15 S. Rs. 546 W. W.M.

Scale 1" = 10 chs.

W.C. Galloway C.S.  
April 1910. For E.H. Belknap  
Nov. 1913. " Ambros Houck

C.S. 181 C.S. 63

15-5&6  
6, 7, 11



1" x 30" Iron Pipe  
Marked Tree S.E.  
7" Chittling Brass  
N30° E. C.S. 181

Jesse H. Cotton Cl. 37  
3" x 4" x 30" Oak  
Stake. Old Trees.

Geo. Belknap D.L. 438  
S34°33'W. 9.418  
Fir 36" N. 20° E. 108  
22.235

Stone 6" x 6" x 12"  
Oak 8" S. 24° 17' W. 2.592  
" 8" S. 71° 15' W. 2.424

Calculated  
40.168  
5.84° 25' W.  
Changed

1/4 sec. cor. between secs. 7 & 15  
Stone set mkd. C.S.  
Oak 16° S. 15° E. .68  
" 30° N. 23° W. .68

1/4 sec. cor. between 7 & 8  
Bramid stone (base 12x12)x24"  
in mound of stone  
Oak 12° N. 79° E. .35 std.  
Fir 48 S. 83° W. .49

31676

12

79.384

31676