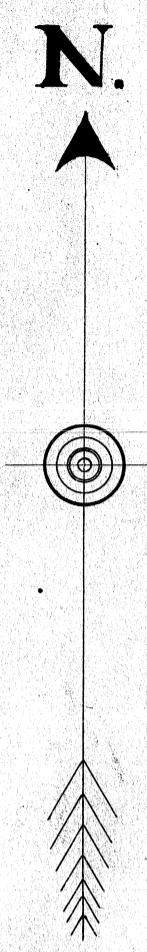


CITY 1

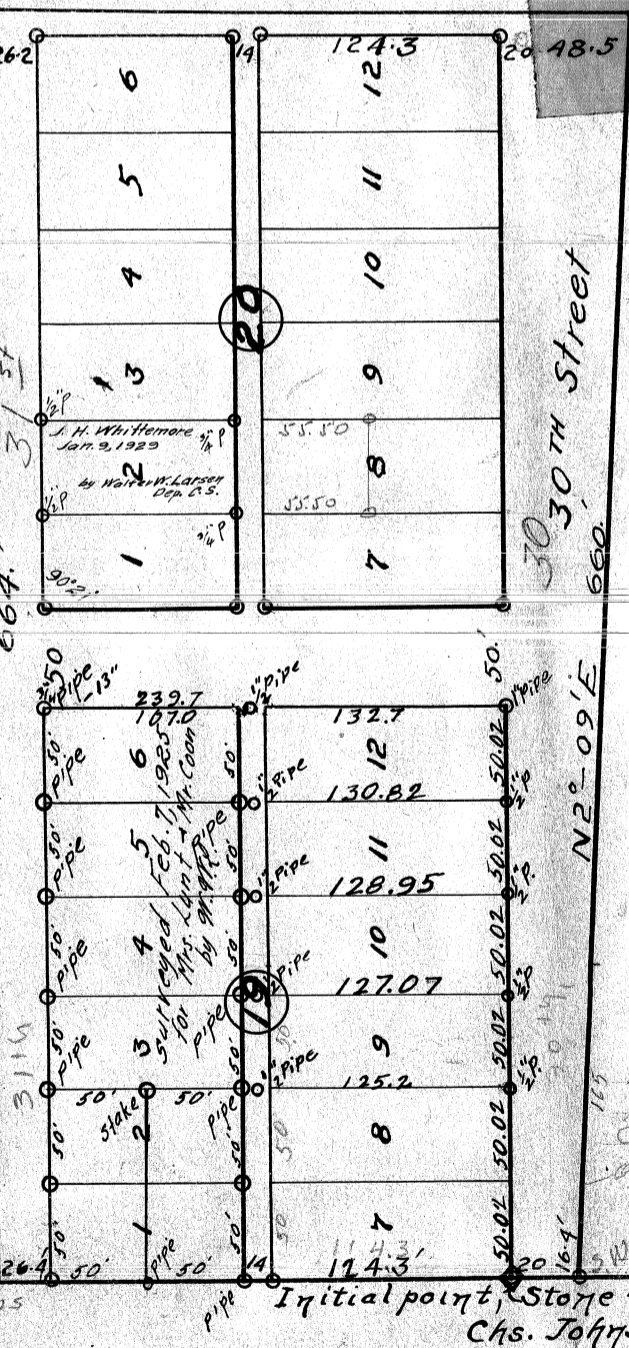
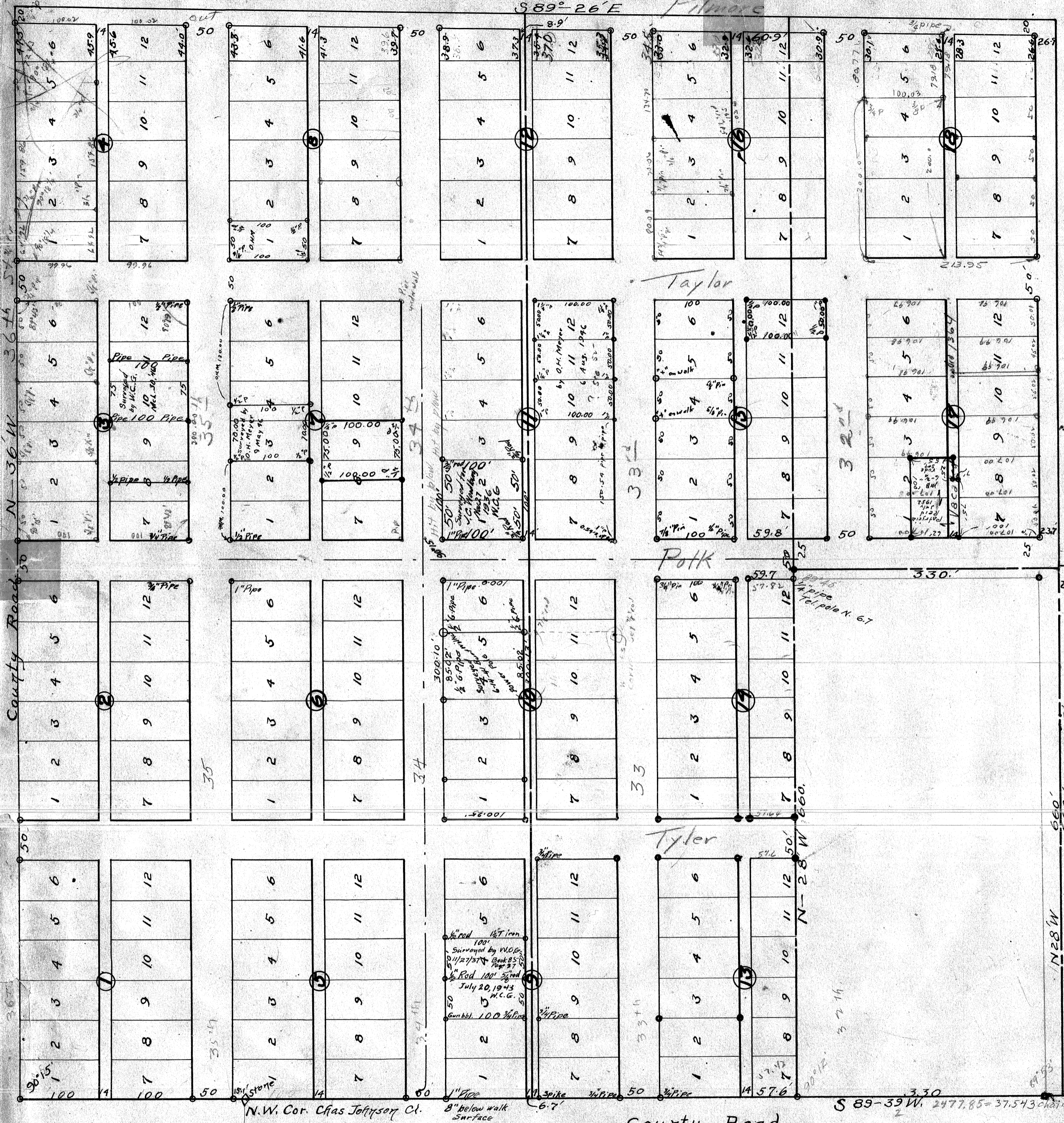
Map of WEST CORVALLIS, OREGON



The initial point is a stone monument 12x8x6 over a 3/4x30" galvanized pipe from which the south east corner of Block 13 Wells + 14th Add is N 89° 36' E 36.4 ft and the initial point of Miller Add is S 55° 23' E 50.4 ft.

Scale = 100

Marion Wilkes



The initial point is 1198.3' from the N.E. corner of Block 13 on the claim line.

N.W. Cor. Chas Johnson Ct.

County Road Harrison

S 89° 39' W. 2477.85 = 37.543 chains

Initial point Stone + pipe of the NORTH Line of Chs. Johnson D.L.C. N 52.