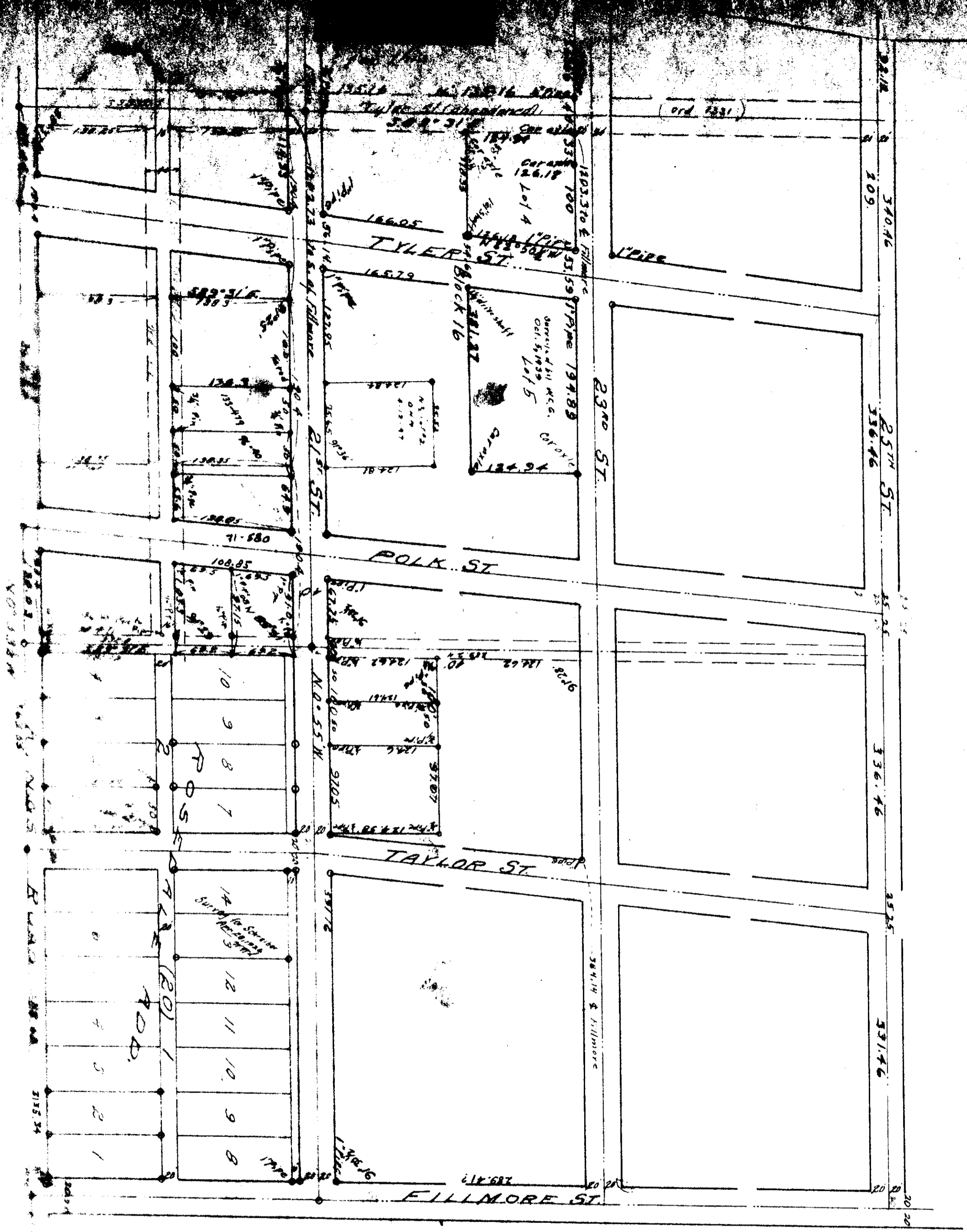


00003



NORTH COLLEGE HILL
 SUPPLEMENTAL PLAT OF COLLEGE HILL ADDITION
 TO CORVALLIS OREGON
 Scale: 1/4" = 100 FT.

NORTH COLLEGE HILL
SUPPLEMENTAL PLAT OF COLLEGE HILL ADDITION
TO CORVALLIS ORE.
Scale - 1 in = 100 ft

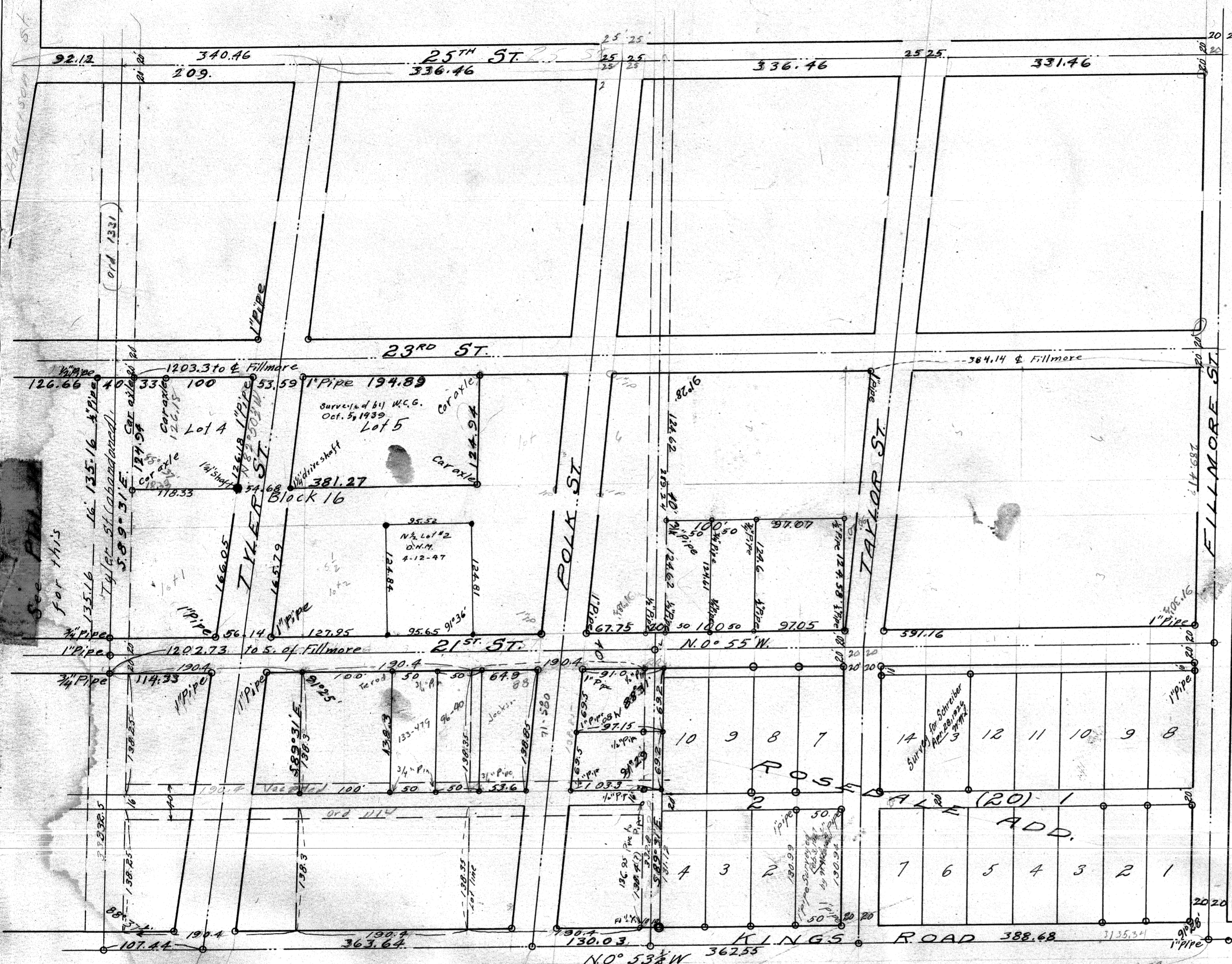


See Plat 16
for this

3
second copy

CP00003A

NORTH COLLEGE HILL
SUPPLEMENTAL PLAT OF COLLEGE HILL ADDITION
TO CORVALLIS ORE.
Scale: - 1 in = 100 ft.



2763.6
 74.29
 2837.89
 2824.14
 13.75

2822.99
 59.39
 2763.60
 2673. deed
 90.6