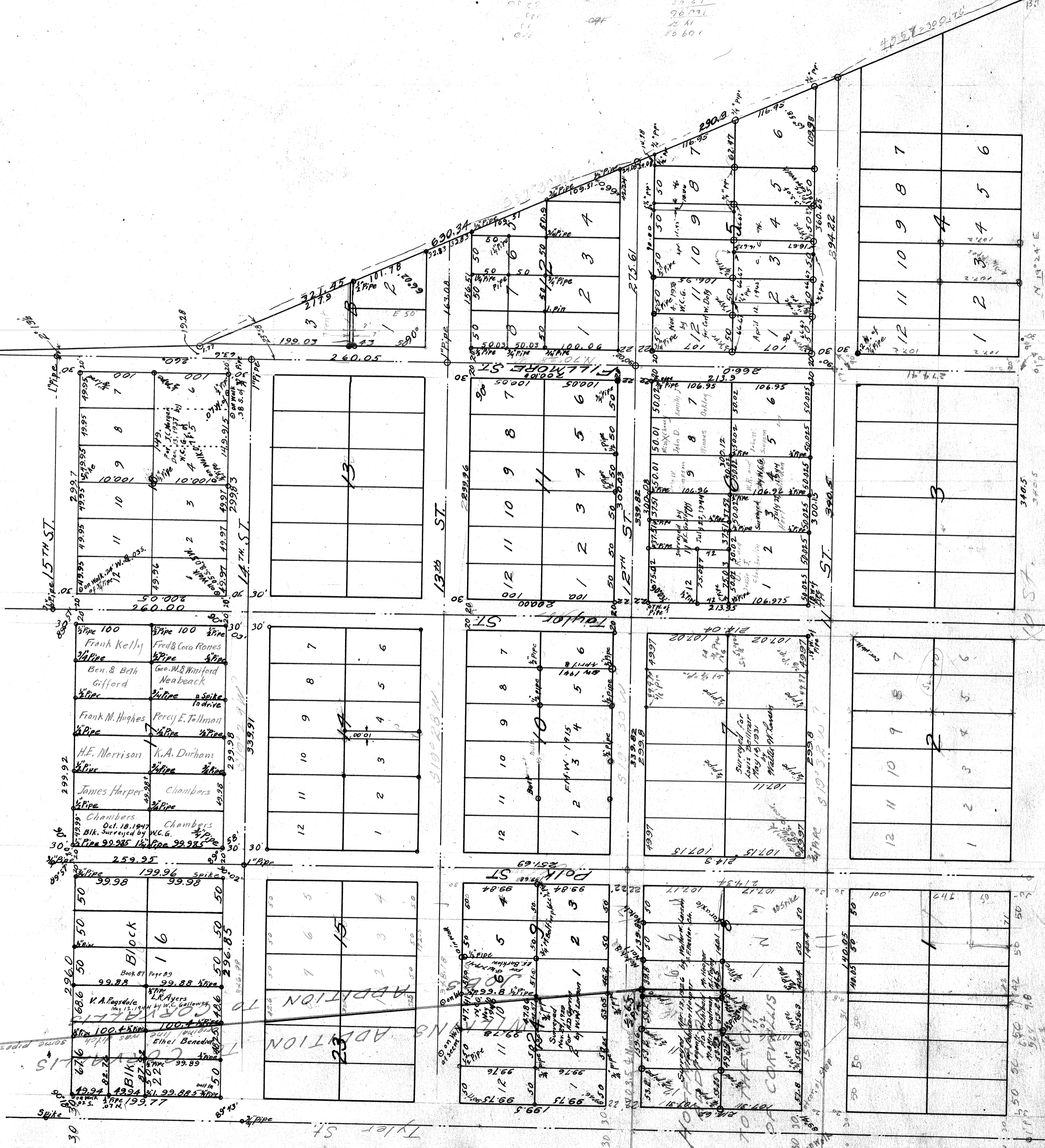


JOB'S ADDITION

Scale 1 in. = 100 ft.

Bearing to  $\frac{1}{2}$  of 16th St.



339.73

340.5

340.5

340.5

340.5

340.5

340.5

340.5

340.5

340.5

340.5

340.5

340.5

340.5

340.5

340.5

340.5

340.5

340.5

340.5

340.5

340.5

340.5

340.5

340.5

340.5

340.5

340.5

340.5

340.5

340.5

340.5

340.5

340.5

340.5

340.5

340.5

340.5

340.5

340.5

340.5

340.5

340.5

340.5

340.5

340.5

340.5

340.5

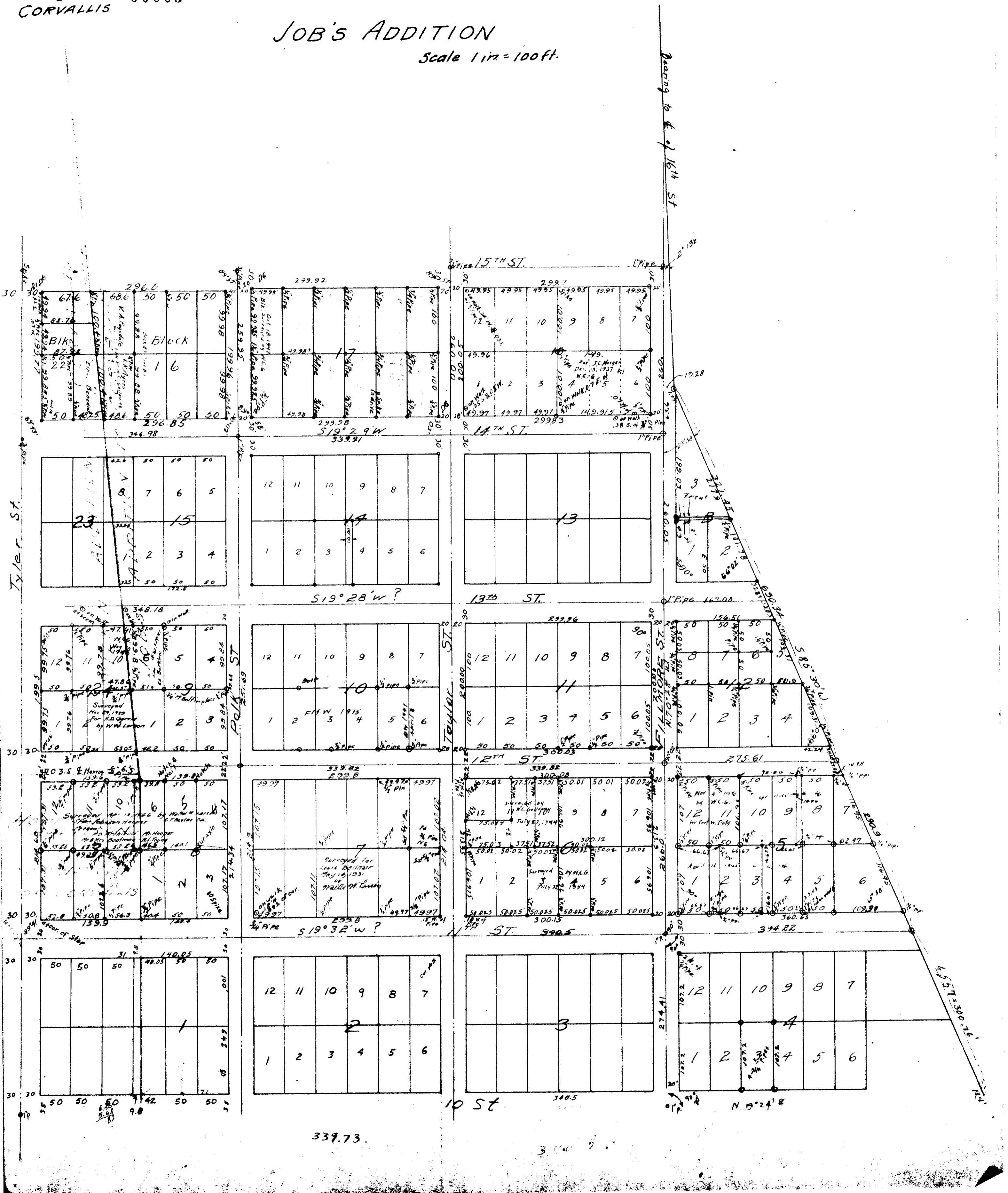
340.5

340.5

340.5

# JOB'S ADDITION

Scale 1 in = 100 ft.



339.73

300.5

N 19° 24' E