

8A

CP00008AA

- PLAT OF - MASONIC BLOCK

CORVALLIS, BENTON CO., ORE

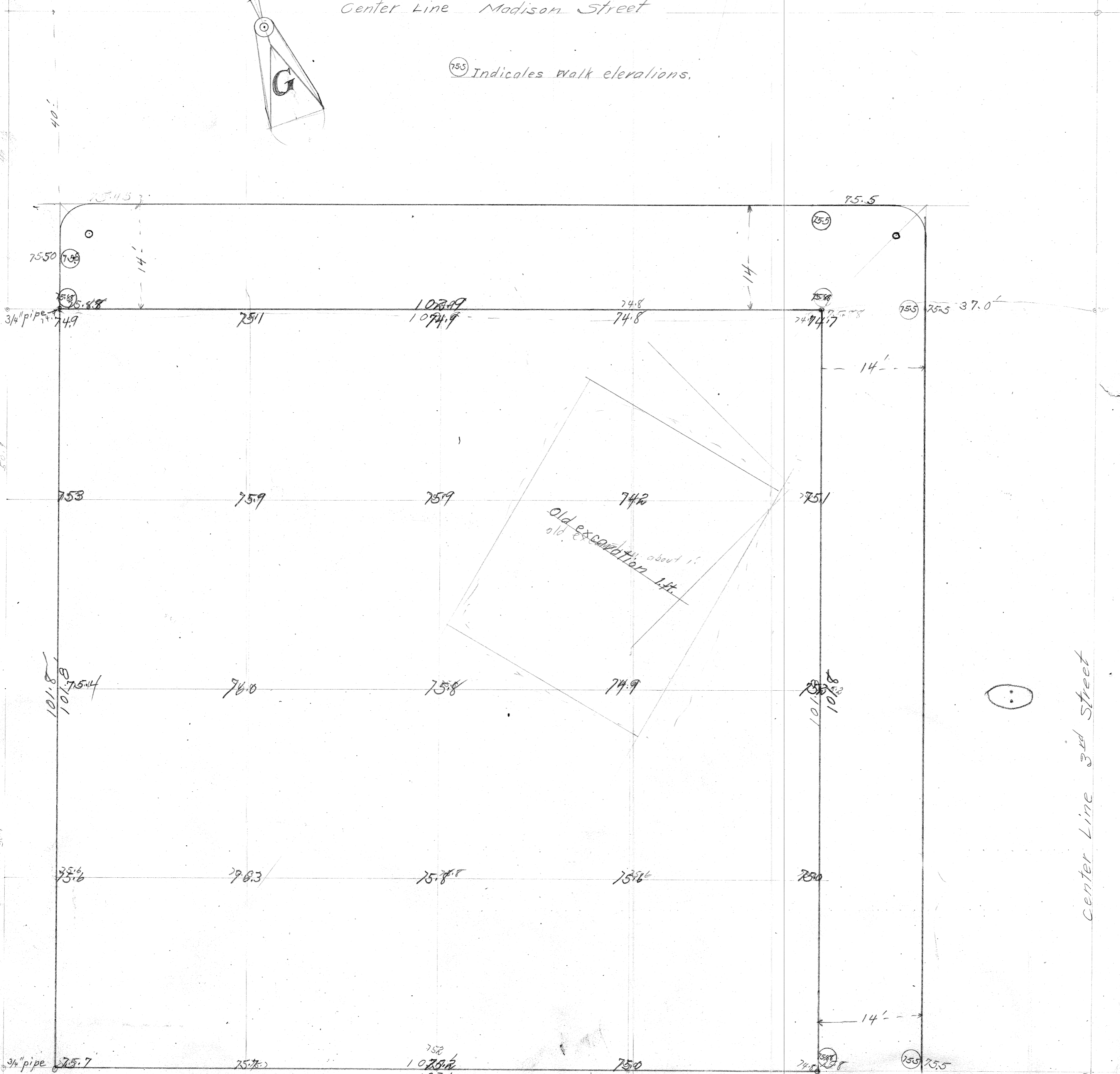
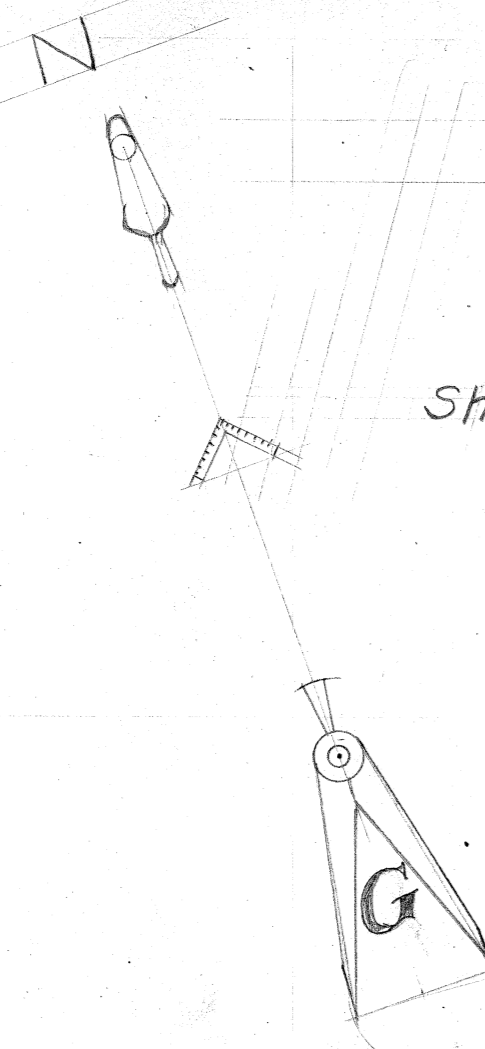
Showing present surface Elevations and Grades for Walks.

Scale = 1" = 10'

April 8, 1910 by F. Marian Wilkes
County Engr.

Center Line Madison Street

(75.3) Indicates Walk elevations.



Center Line 3rd Street