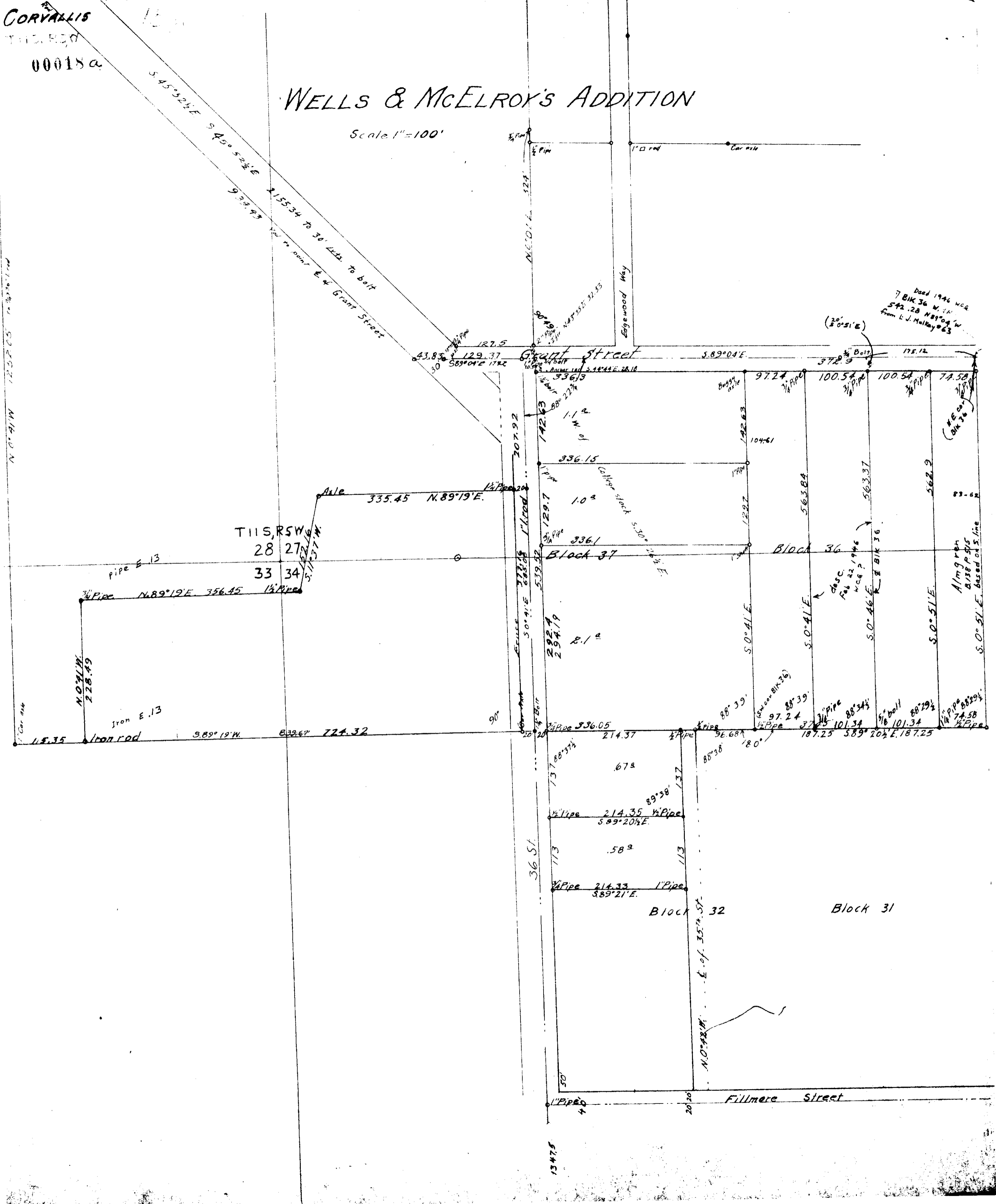


CORVALLIS
THE RECORD
00018 a

WELLS & McELROY'S ADDITION

Scale 1"=100'



S 45° 32' 26" E 9.40° 52' 26" E
 9.39.93
 2155.34 to 30' less to bolt
 you to corner E of Grant Street

Deed 1946 WCG
 7 BK 36 W. 1/4
 542.28 N 89° 04' W
 from L.J. McKay 63

THIS RSW
 28 27
 33 34

(20' 51" E)

83-62

Alm 9' 10"
 2138 P. 515
 2138 P. 515
 S. 0° 51' E. based on S line

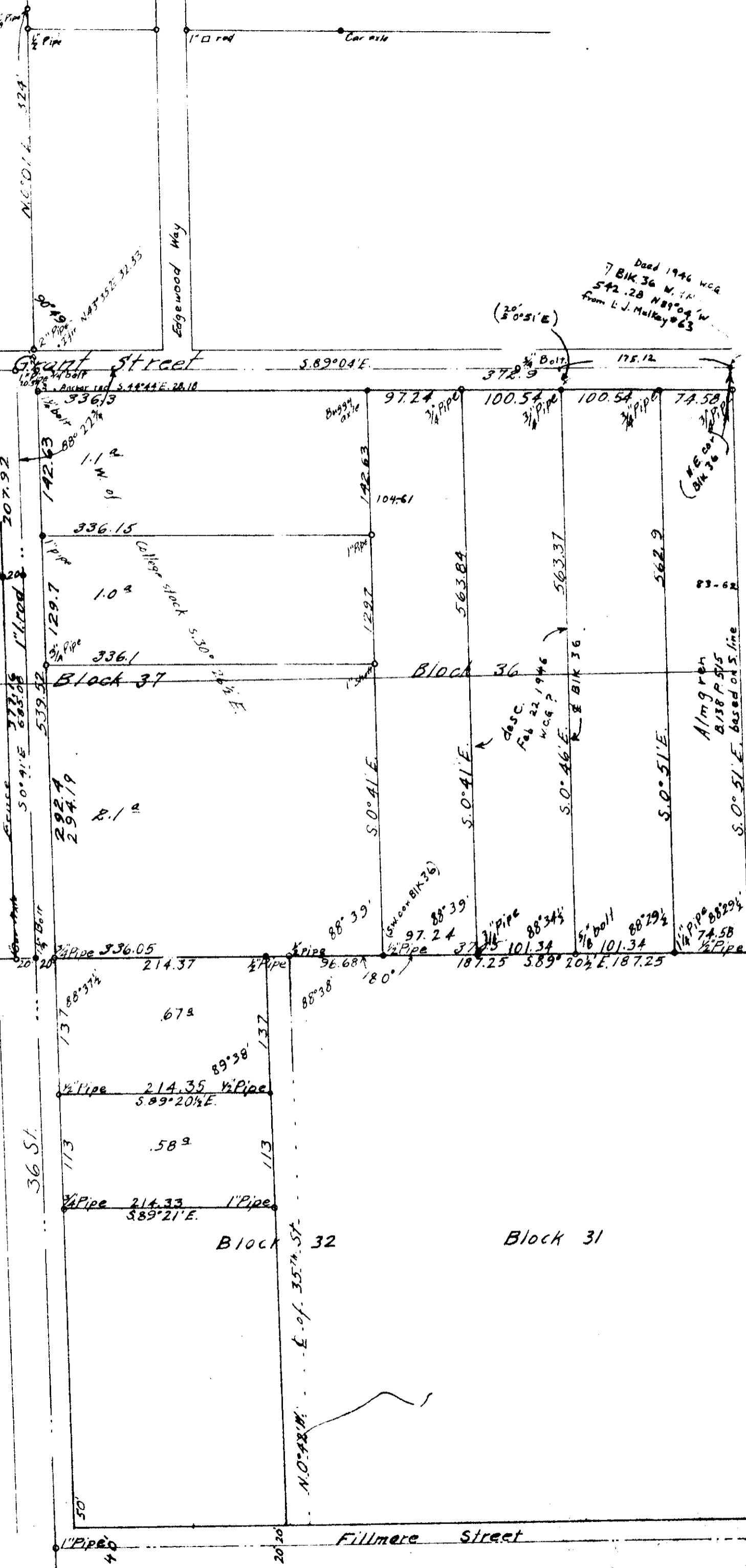
disc
 Feb 22 1946
 WCG P
 88° 39'

Block 32

Block 31

N. 0° 42' W. E. of 35th St.

Fillmore Street



N. 0° 41' W 125.205 to 30' 1 rod

Car axle

N. 0° 41' W
 228.49

Iron E. 13

18.35 Iron rod 3.89° 19' W 832.67 724.32

pipe E. 13

3/4" Pipe N. 89° 19' E 356.45 1 1/2" Pipe

Axe 335.45 N. 89° 19' E.

1 1/2" Pipe

207.92

129.37

127.5

324

1/2" Pipe

3/4" Pipe

1" Pipe

1" Pipe

1" Pipe

1" Pipe

1" Pipe

1" Pipe

1" Pipe

1" Pipe

1" Pipe

1" Pipe

1" Pipe

1" Pipe

1" Pipe

1" Pipe

1" Pipe

1" Pipe

1" Pipe

1" Pipe

1" Pipe

1" Pipe

1" Pipe

1" Pipe

1" Pipe

1" Pipe

1" Pipe

1" Pipe

1" Pipe

1" Pipe

1" Pipe

1" Pipe

1" Pipe

1" Pipe

1" Pipe

1" Pipe

1" Pipe

1" Pipe

1" Pipe

1" Pipe

1" Pipe

1" Pipe

1" Pipe

1" Pipe

1" Pipe

1" Pipe

1" Pipe

1" Pipe

1" Pipe

1" Pipe

1" Pipe

1" Pipe

1" Pipe

1" Pipe

1" Pipe

1" Pipe

1" Pipe

1" Pipe

1" Pipe

1" Pipe

1" Pipe

1" Pipe

1" Pipe

1" Pipe

1" Pipe

1" Pipe

1" Pipe

1" Pipe

1" Pipe

1" Pipe

1" Pipe

1" Pipe

1" Pipe

1" Pipe

1" Pipe

1" Pipe

1" Pipe

1" Pipe

1" Pipe

1" Pipe

1" Pipe

1" Pipe

1" Pipe

1" Pipe

1" Pipe

1" Pipe

1" Pipe

1" Pipe

1" Pipe

1" Pipe

1" Pipe

1" Pipe

1" Pipe

1" Pipe

1" Pipe

1" Pipe

1" Pipe

1" Pipe

1" Pipe

1" Pipe

1" Pipe

1" Pipe

1" Pipe

1" Pipe

1" Pipe

1" Pipe

1" Pipe

1" Pipe

1" Pipe

1" Pipe

1" Pipe

1" Pipe

1" Pipe

1" Pipe

1" Pipe

1" Pipe

1" Pipe

1" Pipe

1" Pipe

1" Pipe

1" Pipe

1" Pipe

1" Pipe

1" Pipe

1" Pipe

1" Pipe

1" Pipe

1" Pipe

1" Pipe

1" Pipe

1" Pipe

1" Pipe

1" Pipe

1" Pipe

1" Pipe

1" Pipe

1" Pipe

1" Pipe

1" Pipe

1" Pipe

1" Pipe

1" Pipe

1" Pipe

1" Pipe

1" Pipe

1" Pipe

1" Pipe

1" Pipe

1" Pipe

1" Pipe

1" Pipe

1" Pipe

1" Pipe

1" Pipe

1" Pipe

1" Pipe

1" Pipe

1" Pipe

1" Pipe

1" Pipe

1" Pipe

1" Pipe

1" Pipe

1" Pipe

1" Pipe

1" Pipe

1" Pipe

1" Pipe

1" Pipe

1" Pipe

1" Pipe

1" Pipe

1" Pipe

1" Pipe

1" Pipe

1" Pipe

1" Pipe

1" Pipe

1" Pipe

1" Pipe

1" Pipe

1" Pipe

1" Pipe

1" Pipe

1" Pipe

1" Pipe

1" Pipe

1" Pipe

1" Pipe

1" Pipe

1" Pipe

1" Pipe

1" Pipe

1" Pipe

1" Pipe

1" Pipe

1" Pipe

1" Pipe

1" Pipe

1" Pipe

1" Pipe

1" Pipe

1" Pipe

1" Pipe

1" Pipe

1" Pipe

1" Pipe

1" Pipe

1" Pipe

1" Pipe

1" Pipe

1" Pipe

1" Pipe

1" Pipe

1" Pipe

1" Pipe

1" Pipe

1" Pipe

1" Pipe

1" Pipe

1" Pipe

1" Pipe

1" Pipe

1" Pipe

1" Pipe

1" Pipe

1" Pipe

1" Pipe

1" Pipe

1" Pipe

1" Pipe

1" Pipe

1" Pipe

1" Pipe

1" Pipe

1" Pipe

1" Pipe

1" Pipe

1" Pipe

1" Pipe

1" Pipe

1" Pipe

1" Pipe

1" Pipe

1" Pipe

1" Pipe

1" Pipe

1" Pipe

1" Pipe

1" Pipe

1" Pipe

1" Pipe

1" Pipe

1" Pipe

1" Pipe

1" Pipe

1" Pipe

1" Pipe

1" Pipe

1" Pipe

1" Pipe

1" Pipe

1" Pipe

1" Pipe

1" Pipe

1" Pipe

1" Pipe

1" Pipe