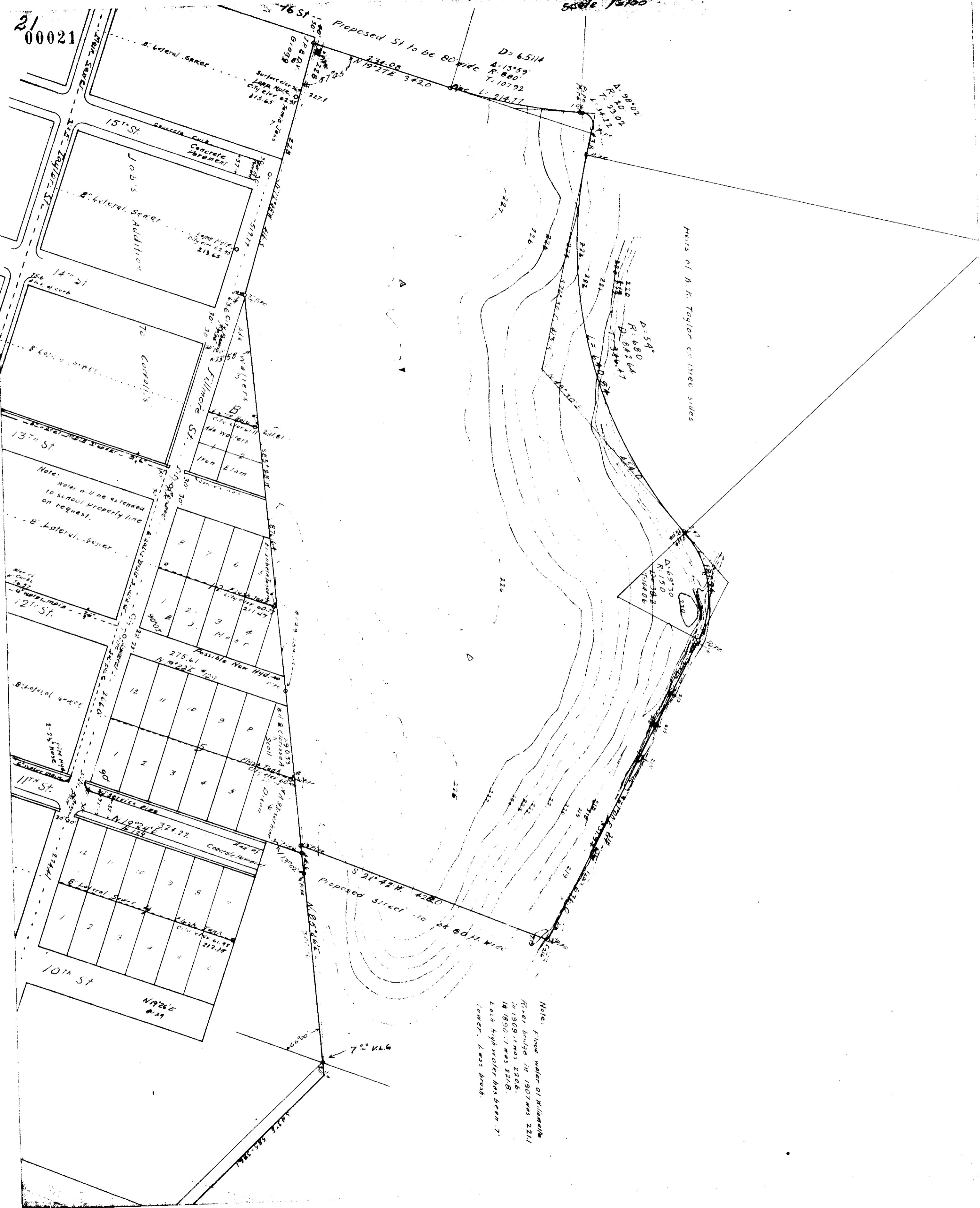


Scale 1/4" = 100'

2100021



15th St
Concrete Pavement
Job's Addition
8" Lateral Sewer
Lump Note
City Enr 6295
213.65

14th St
8" Lateral Sewer
70 Corrollis
11th St
8" Lateral Sewer
12th St
8" Lateral Sewer
13th St
8" Lateral Sewer
14th St
8" Lateral Sewer
15th St
8" Lateral Sewer

Note: Water will be extended to school property line on request.

Assible Non Hydro
275.61
N 19° 21' E 342.0
N 19° 21' E 342.0
N 19° 21' E 342.0

12th St
11th St
10th St
N 19° 21' E 342.0
N 19° 21' E 342.0
N 19° 21' E 342.0

10th St
N 19° 21' E 342.0
N 19° 21' E 342.0
N 19° 21' E 342.0

10th St
N 19° 21' E 342.0
N 19° 21' E 342.0
N 19° 21' E 342.0

Proposed St to be 80' wide
D = 6.5114
A = 13° 59'
R = 800'
T = 107.92
L = 214.77

88° 00'
R = 532.2
D = 5.5114
L = 214.77

D = 5.4'
R = 680'
D = 5.4144
L = 214.77

D = 6.9730
R = 1510'
D = 6.9730
L = 214.77

Heirs of N. H. Taylor on three sides

Note: Flood water of Williams River bridge in 1907 was 2211 in 1909 it was 2206. In 1890 it was 2218. Each high water has been 7' lower. Less brush.

Proposed street to be 80 ft wide
S 21° 42' W 428.0
N 19° 21' E 342.0

7° V.L.6