

CCR #17
11-8-2013

RECORD OF CONTROL NETWORK MONUMENTATION

CORNER: OSU CONTROL POINT No. 501 LOCATED AT THE INTERSECTION OF 35TH STREET AND CAMPUS WAY ON THE OREGON STATE UNIVERSITY CAMPUS. THE REMONUMENTATION OF THIS CONTROL POINT WAS REQUESTED BY OREGON STATE UNIVERSITY. THE ORIGINAL CONTROL POINT WAS REMOVED DURING THE RECONSTRUCTION OF THE INTERSECTION OF CAMPUS WAY.

REMONUMENTATION

DATE: OCTOBER 15, 2013 BY: BRIAN SAILOR, MATT WALKER FIRM: COLE SURVEYING, LLC. EVIDENCE RECOVERED: CONTROL POINT No. 501 WAS RESET IN ITS ORIGINAL POSITION BY USING THE ORIGINAL FIELD TIES THAT WERE PERFORMED DURING THE ESTABLISHMENT OF THE OREGON STATE UNIVERSITY CONTROL NETWORK. THE ELEVATION WAS OBTAINED BY RUNNING A THREE WIRE LEVEL LOOP FROM CONTROL POINT No 506. THE BASIS OF BEARINGS IS BETWEEN CONTROL POINT No. 502 LOCATED AT THE INTERSECTION OF 30TH STREET AND CAMPUS WAY AND CONTROL POINT No. 503 LOCATED AT THE INTERSECTION OF 26TH STREET AND CAMPUS WAY. BOTH CONTROL POINTS ARE PART OF THE CONTROL SURVEY PERFORMED BY COLE SURVEYING IN 2001 FOR OREGON STATE UNIVERSITY.

CORNER SET: SET 3-1/4" ALUMINUM CAP ON 5/8" IRON ROD MARKED AS SHOWN BELOW. NEW ELEVATION = 248.66

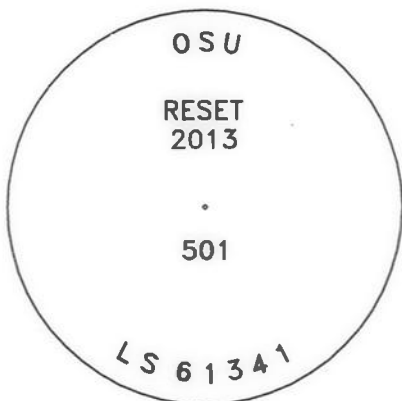
() RECORD INFORMATION FROM ORIGINAL FIELD NOTES OF CONTROL SURVEY

PREPARED BY
COLE SURVEYING, LLC
245 NE CONIFER BLVD.
P.O. BOX 1211
CORVALLIS, OREGON 97339
(541) 929-5500

REGISTERED
PROFESSIONAL
LAND SURVEYOR

OREGON
JANUARY 11, 2005
BRIAN SCOTT SAILOR
61341

EXPIRES 6/30/14



NOT-TO-SCALE

SET 5/8" x 30"
IRON ROD WITH
3-1/4" ALUMINUM
CAP, CAP MARKED
AS SHOWN ABOVE

CAMPUS WAY

35th STREET

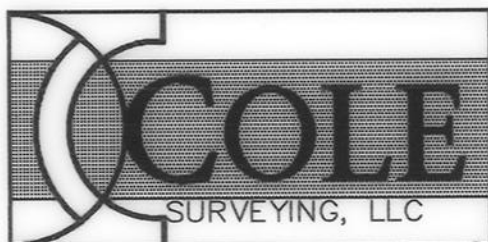
N87°54'53"W 1464.12'
(1464.12')

BASIS OF BEARINGS
BENTON COUNTY CCR #17
S88°24'22"E 1184.32'
(S88°24'22"E 1184.32')

OSU CONTROL
POINT No. 502

OSU CONTROL
POINT No. 503

180°29'29"
(180°29'29")



CCR 17
8-8-12

RECORD OF CONTROL NETWORK MONUMENTATION

CORNER: OSU CONTROL POINT No. 502 LOCATED AT THE INTERSECTION OF 30TH STREET AND CAMPUS WAY ON THE OREGON STATE UNIVERSITY CAMPUS. THE REMONUMENTATION OF THIS CONTROL POINT WAS REQUESTED BY OREGON STATE UNIVERSITY. THE ORIGINAL CONTROL POINT WAS REMOVED DURING THE RECONSTRUCTION OF THE INTERSECTION OF 30TH STREET AND CAMPUS WAY.

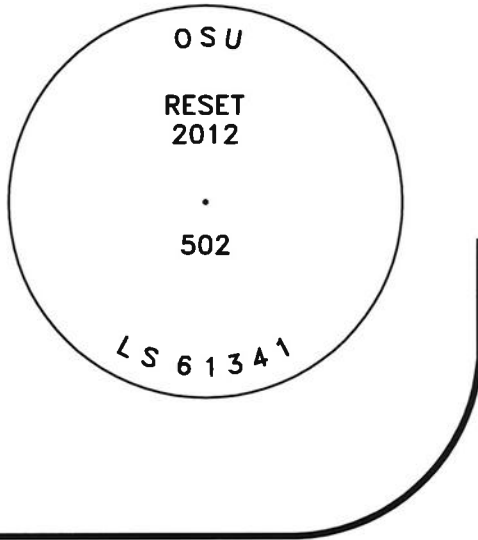
REMONUMENTATION

DATE: JULY 19, 2012 BY: BRIAN SAILOR, MATT WALKER FIRM: COLE SURVEYING, LLC. EVIDENCE RECOVERED: CONTROL POINT No. 502 WAS RESET IN ITS ORIGINAL POSITION BY USING THE ORIGINAL FIELD TIES THAT WERE PERFORMED DURING THE ESTABLISHMENT OF THE OREGON STATE UNIVERSITY CONTROL NETWORK. THE ELEVATION WAS OBTAINED BY RUNNING A THREE WIRE LEVEL LOOP FROM CONTROL POINT No 503. THE BASIS OF BEARINGS IS BETWEEN CONTROL POINT No. 503 LOCATED AT THE INTERSECTION OF 26TH STREET AND CAMPUS WAY AND CONTROL POINT No. 508 LOCATED AT THE INTERSECTION OF 26TH STREET AND JEFFERSON WAY. BOTH CONTROL POINTS ARE PART OF THE CONTROL SURVEY PERFORMED BY COLE SURVEYING IN 2001 FOR OREGON STATE UNIVERSITY.

CORNER SET: SET 3-1/4" ALUMINUM CAP ON 5/8" IRON ROD MARKED AS SHOWN BELOW. NEW ELEVATION = 246.95

() RECORD INFORMATION FROM ORIGINAL FIELD NOTES OF CONTROL SURVEY

PREPARED BY
COLE SURVEYING, LLC
245 NE CONIFER BLVD.
P.O. BOX 1211
CORVALLIS, OREGON 97339
(541) 929-5500



NOT-TO-SCALE

30th STREET

CAMPUS WAY

30th STREET

SET 5/8" x 30"
IRON ROD WITH
3-1/4" ALUMINUM
CAP, CAP MARKED
AS SHOWN ABOVE

N88°24'22"W 1184.32'
(1184.32')

OSU CONTROL
POINT No. 503

(91°02'49")

BASIS OF BEARINGS
BENTON COUNTY CCR #17
N00°32'49"E 823.46'
(823.46')

OSU CONTROL
POINT No. 508

REGISTERED
PROFESSIONAL
LAND SURVEYOR

OREGON
JANUARY 11, 2005
BRIAN SCOTT SAILOR
61341

EXPIRES 6/30/14



CCR 17
10-25-2010

RECORD OF CONTROL NETWORK MONUMENTATION

CORNER: OSU CONTROL POINT No. 508 LOCATED AT THE INTERSECTION OF 26TH STREET AND JEFFERSON WAY ON THE OREGON STATE UNIVERSITY CAMPUS. THE REMONUMENTATION OF THIS CONTROL POINT WAS REQUESTED BY OREGON STATE UNIVERSITY. THE ORIGINAL CONTROL POINT WAS REMOVED DURING THE RECONSTRUCTION OF THE INTERSECTION OF 26TH STREET AND JEFFERSON WAY.

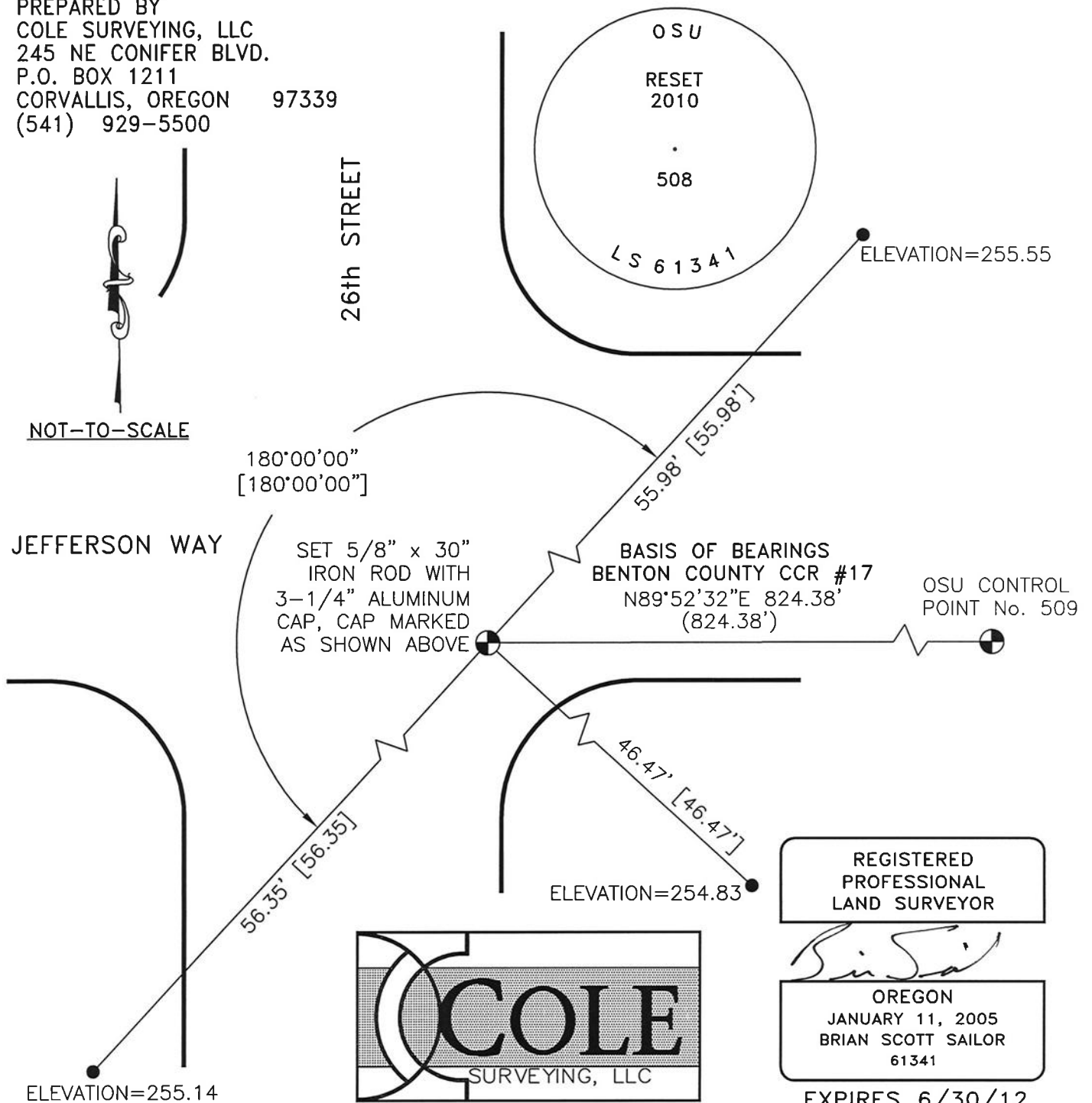
REMONUMENTATION

DATE: SEPTEMBER 29, 2010 BY: BRIAN SAILOR, JED MITCHELL FIRM: COLE SURVEYING, LLC. EVIDENCE RECOVERED: CONTROL POINT No. 508 WAS RESET IN ITS ORIGINAL POSITION BY SETTING REFERENCE MONUMENTS PRIOR TO CONSTRUCTION AS SHOWN. THE ELEVATION WAS OBTAINED BY RUNNING A THREE WIRE LEVEL LOOP FROM THE REFERENCE MONUMENTS. THE BASIS OF BEARINGS IS BETWEEN CONTROL POINT No. 508 AND CONTROL POINT No. 509 LOCATED AT THE NORTHEAST CORNER OF JEFFERSON WAY AND WALDO PLACE. BOTH CONTROL POINTS ARE PART OF THE CONTROL SURVEY PERFORMED BY COLE SURVEYING IN 2001 FOR OREGON STATE UNIVERSITY.

CORNER SET: SET 3-1/4" ALLUMINUM CAP ON 5/8" IRON ROD MARKED AS SHOWN BELOW. NEW ELEVATION = 255.33

- () RECORD INFORMATION FROM ORIGINAL FIELD NOTES OF CONTROL SURVEY
- [] ORIGINAL DISTANCE FROM ESTABLISHMENT OF REFERENCE MONUMENTS (6/22/10)
- SET 5/8" x 30" IRON ROD WITH RED PLASTIC CAP MARKED "COLE SURV REF MON"

PREPARED BY
COLE SURVEYING, LLC
245 NE CONIFER BLVD.
P.O. BOX 1211
CORVALLIS, OREGON 97339
(541) 929-5500



REGISTERED
PROFESSIONAL
LAND SURVEYOR

Brian Sailor
OREGON
JANUARY 11, 2005
BRIAN SCOTT SAILOR
61341

EXPIRES 6/30/12

CCR #17
3-18-05

RECORD OF CONTROL NETWORK MONUMENTATION

CORNER: OSU CONTROL POINT No. 511 LOCATED AT THE NORTHEAST CORNER OF THE INTERSECTION OF 26th STREET AND WASHINGTON WAY.
THE REMONUMENTATION OF THIS CONTROL POINT WAS REQUESTED BY OREGON STATE UNIVERSITY THIS CONTROL POINT WAS REMOVED DURING THE CONSTRUCTION OF NEW SIDEWALKS AND A.D.A. RAMPS

REMONUMENTATION

DATE: JANUARY 3, 2005 BY: MATT WALKER, BRIAN SAILOR FIRM: COLE SURVEYING
EVIDENCE RECOVERED: _____

CONTROL POINT No. 511 WAS RESET IN ITS ORIGINAL POSITION USING FIELD MEASUREMENTS OBTAINED FROM THE ORIGINAL CONTROL SURVEY COLE SURVEYING PERFORMED IN 2001 FOR OREGON STATE UNIVERSITY. A 3-WIRE LEVEL LOOP WAS RUN FROM ADJACENT OSU CONTROL POINTS TO DETERMINE A NEW ELEVATION.

CORNER SET: RÉSET 3" BRASS CAP ON 3/4" IRON PIPE, MARKED AS SHOWN BELOW, RECESSED IN CONCRETE WALK
NEW ELEVATION = 237.34 FEET = 72.343 METERS

() RECORD INFORMATION FROM ORIGINAL FIELD NOTES

REGISTERED
PROFESSIONAL
LAND SURVEYOR

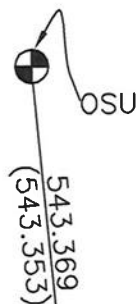
C. Henry Cole

OREGON
JULY 13, 1984
C. HENRY COLE
2088

EXPIRES 12/31/05

26th STREET

SET 3/4" x 30"
IRON PIPE WITH
3" BRASS CAP
IN SIDEWALK;
CAP MARKED AS
SHOWN BELOW



NOT-TO-SCALE

1339.552 (1339.557)
N 89°25'04" E
BASIS OF BEARINGS BENTON COUNTY CCR #17

OSU CONTROL POINT 511
ELEVATION = 237.34 FEET
72.343 METERS

WASHINGTON WAY

OSU CONTROL POINT 510

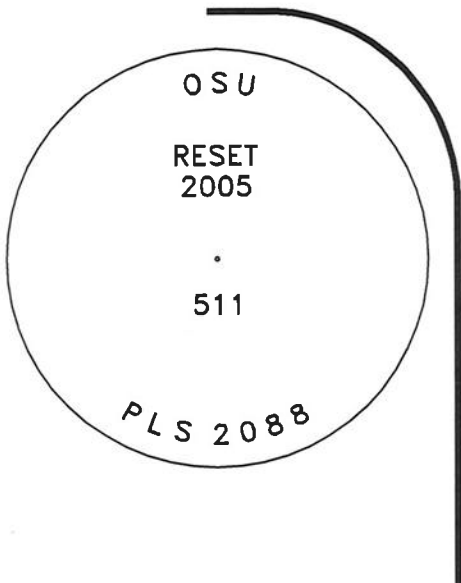
1272.310
(1272.292)



**COLE
SURVEYING, INC.**

C. HENRY COLE, P.L.S.
COLE SURVEYING, INC.
6765 S.W. PHILOMATH BLVD.
CORVALLIS, OREGON 97333
(541) 929-5500

FD PK NAIL W/SHINER COLE
SURVEYING TRAVERSE POINT USED
IN ORIGINAL CONTROL TRAVERSE



CLR 17
2-11-13

RECORD OF CONTROL NETWORK MONUMENTATION

CORNER: OSU CONTROL POINT No. 512 LOCATED AT THE INTERSECTION OF 26TH STREET AND WESTERN BOULEVARD WAY ON THE OREGON STATE UNIVERSITY CAMPUS. THE REMONUMENTATION OF THIS CONTROL POINT WAS REQUESTED BY OREGON STATE UNIVERSITY. THE ORIGINAL CONTROL POINT WAS REMOVED DURING THE RECONSTRUCTION OF THE INTERSECTION OF 26TH STREET AND WESTERN BOULEVARD.

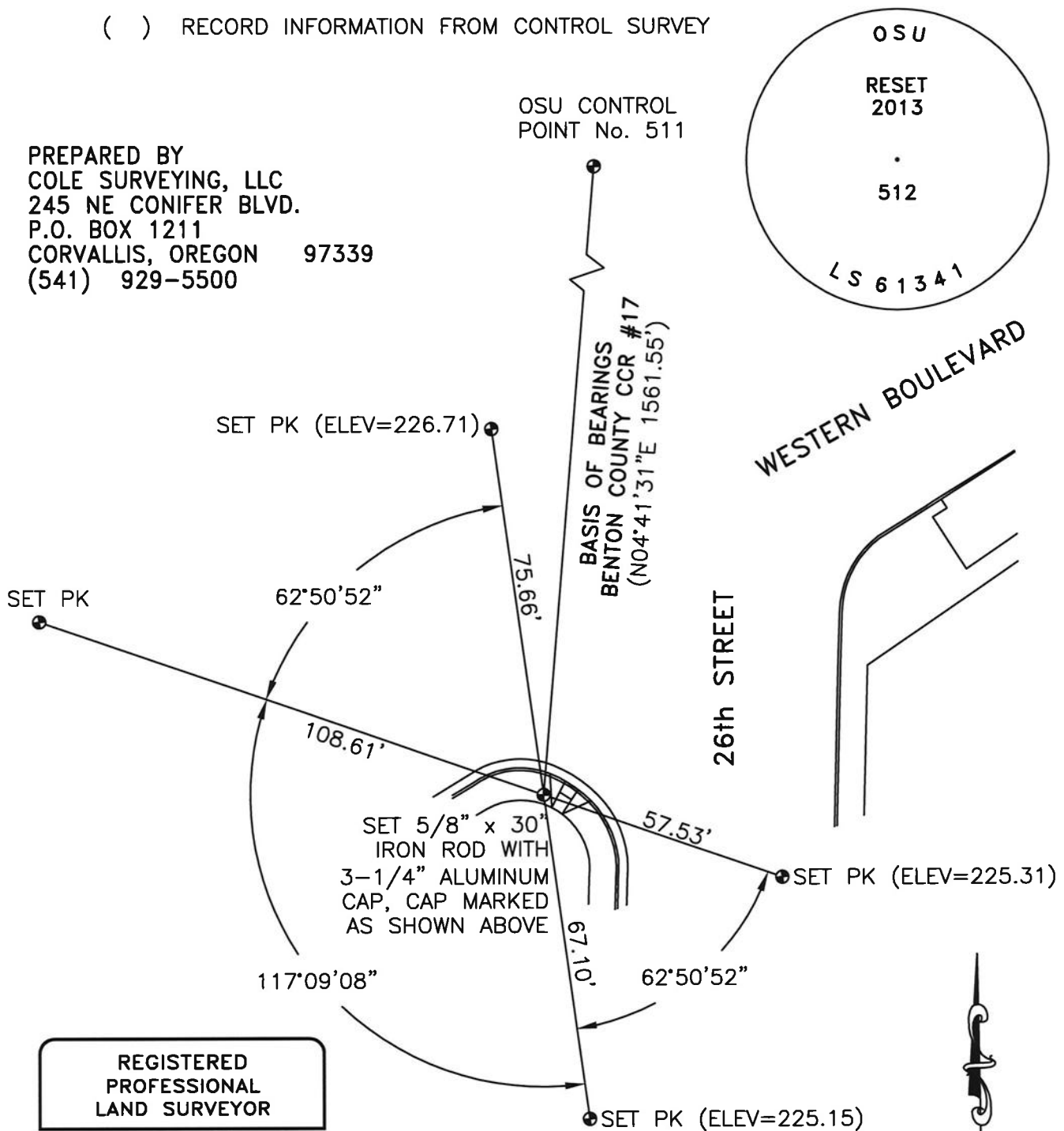
REMONUMENTATION

DATE: FEBRUARY 6, 2013 BY: BRIAN SAILOR, CHRIS SAILOR FIRM: COLE SURVEYING, LLC. EVIDENCE RECOVERED: CONTROL POINT No. 512 WAS RESET IN ITS ORIGINAL POSITION BY SETTING REFERENCE POINTS AS SHOWN BELOW. THE ELEVATION WAS OBTAINED BY RUNNING A THREE WIRE LEVEL LOOP FROM SAID REFERENCE POINTS. THE BASIS OF BEARINGS IS BETWEEN CONTROL POINT No. 511 LOCATED AT THE INTERSECTION OF 26TH STREET AND WASHINGTON WAY AND CONTROL POINT No. 512. BOTH CONTROL POINTS ARE PART OF THE CONTROL SURVEY PERFORMED BY COLE SURVEYING IN 2001 FOR OREGON STATE UNIVERSITY.

CORNER SET: SET 3-1/4" ALUMINUM CAP ON 5/8" IRON ROD MARKED AS SHOWN BELOW. NEW ELEVATION = 226.08.

() RECORD INFORMATION FROM CONTROL SURVEY

PREPARED BY
COLE SURVEYING, LLC
245 NE CONIFER BLVD.
P.O. BOX 1211
CORVALLIS, OREGON 97339
(541) 929-5500



REGISTERED
PROFESSIONAL
LAND SURVEYOR

B. S.
OREGON
JANUARY 11, 2005
BRIAN SCOTT SAILOR
61341

EXPIRES 6/30/14



NOT-TO-SCALE

CCR #17
3-19-07

RECORD OF CONTROL NETWORK MONUMENTATION

OSU CONTROL POINT "VETMED" IS LOCATED IN THE SIDEWALK ON THE WEST SIDE OF 30TH STREET, APPROXIMATELY 300 FEET NORTH OF THE NORTH TOP OF BANK OF OAK CREEK.

THE REMONUMENTATION OF THIS CONTROL POINT WAS REQUESTED BY OREGON STATE UNIVERSITY AS A RESULT OF THE 30TH STREET RECONSTRUCTION PROJECT THAT TOOK PLACE IN THE SUMMER OF 2006. THE CAP WAS ORIGINALLY SET IN A 24" DIAMETER CONCRETE CYLINDER AS PART OF THE OREGON STATE UNIVERSITY CONTROL NETWORK.

REMONUMENTATION PROCEDURE

DATE: AUGUST 31, 2006 BY: DAVID MALONE, BRIAN SAILOR FIRM: COLE SURVEYING
PROCEDURE:

PRIOR TO DEMOLITION OF THE CAP AND THE CONCRETE CYLINDER, WE SET UP THE INSTRUMENT ON THE CAP AND TIED TWO PK NAILS THAT HAD BEEN SET AT AN APPROXIMATELY 90° ANGLE. FOLLOWING EACH TIE, THE GUN WAS THEN "FLOPPED" TO THE REVERSE POSITION AND A SCRIBE WAS MADE ON THE CURB OF THE NEWLY CONSTRUCTED PARKING LOT TO THE WEST. THE CAP WAS THEN PUT BACK IN ITS ORIGINAL POSITION BY SETTING UP ON EACH PK NAIL AND INTERSECTING THE LINES CREATED BY SIGHTING THEIR RESPECTIVE SCRIBE MARKS. A 3-WIRE LEVEL LOOP WAS RUN FROM OSU CONTROL POINT 510, LOCATED AT THE INTERSECTION OF 30TH STREET AND JEFFERSON WAY, TO DETERMINE THE NEW ELEVATION.

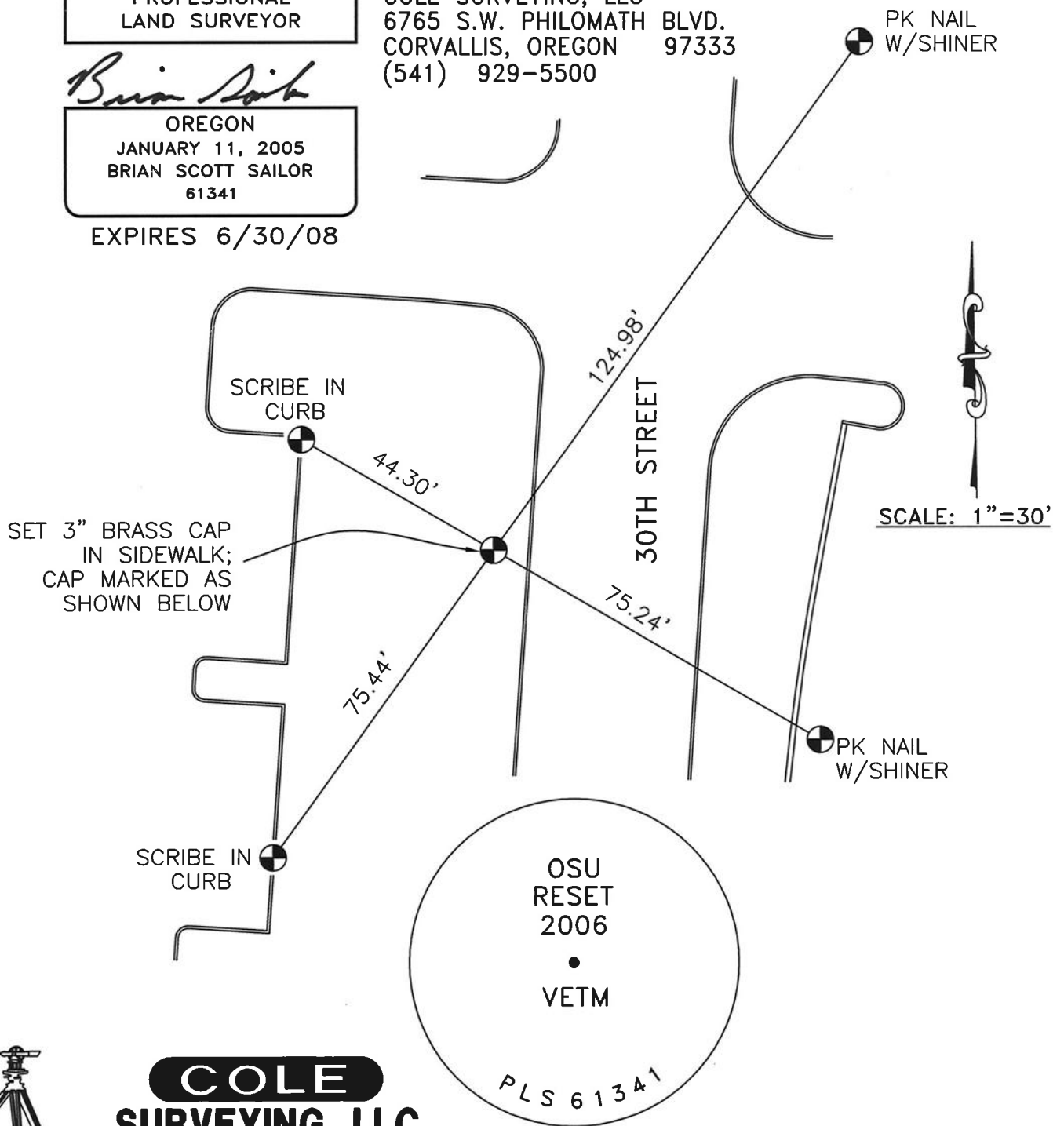
CORNER SET: RESET 3" BRASS CAP ON 3/4" IRON PIPE, MARKED AS SHOWN BELOW, RECESSED IN CONCRETE WALK
NEW ELEVATION = 233.87 FEET = 71.284 METERS (NAVD 88)

REGISTERED
PROFESSIONAL
LAND SURVEYOR

Brian Sailor
OREGON
JANUARY 11, 2005
BRIAN SCOTT SAILOR
61341

EXPIRES 6/30/08

BRIAN SAILOR, P.L.S.
COLE SURVEYING, LLC
6765 S.W. PHILOMATH BLVD.
CORVALLIS, OREGON 97333
(541) 929-5500



**COLE
SURVEYING, LLC**