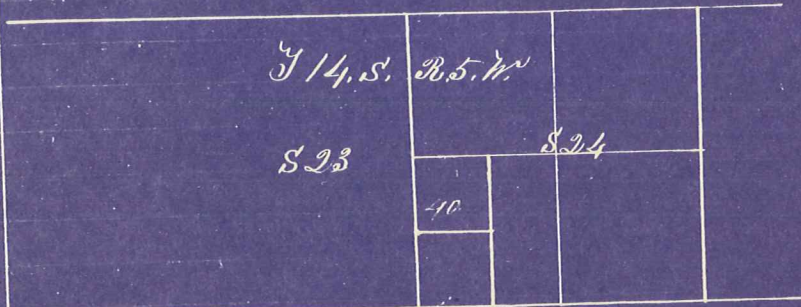


Survey No 3



For A.W. Starr of the N¹/₂ of the W¹/₂ of the S.W.¹/₄ of Section 24 T 14 S R 5 W

Beginning at the ¹/₄ corner on the East boundary of Section 23 T 14 S R 5 W.

- South 20.00 chs. to a post. a Fir Tree 20 inches in dia bears N 45° W 28 Links distant
- East 20.00 chs to a post. a Maple Tree 8 inches in dia bears South 18° 30' W 7 Links distant
- North 20.00 chs to a post an Ash Tree 16 inches in dia bears S 22° 45' W 15 Links distant
- West 20.00 chs to place of beginning containing 40 Acres

Territory of Oregon }
 County of Benton } S J

I hereby certify that on the 13th day of July A.D. 1855 I surveyed the above described tract of land for A.W. Starr assisted by Warren Hinton and S. F. Starr respectively qualified chairman that the above diagram and notes are correct of said survey

L. A. Davis
 County Surveyor