



Book No 3

THE  
LIVING  
LIBRARY

U

6

**#103**

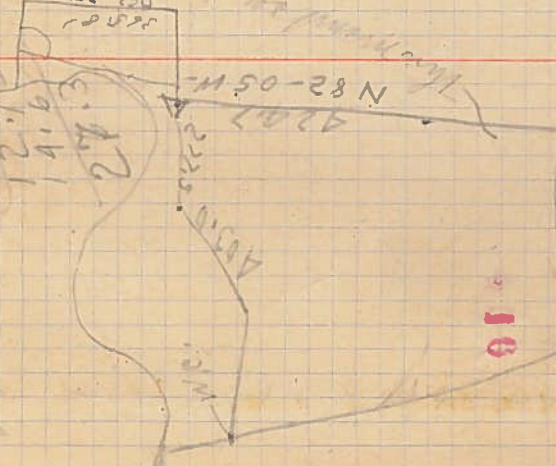
G. J. Rice #17  
 1/2 mi. to S & E corner of tract  
 at sharp S-E 32.1  
 1/2 mi. to S.W. 49.5  
 1/2 mi. to N.E. 39.7  
 Produced Paul has 4 cor grain  
 1/2 mi. to S.W. corner on E bank. 3.1  
 Reference to 1/2 mi. to S.W. 7.3  
 1/2 mi. to N.W. corner 15.5  
 1/2 mi. to S.W. corner N 59-35 E  
 from W.C. S 76-35 E  
 to water edge 14.6 A  
 across 40.1 A  
 distance to N.C. + 27.0 A corner  
**MS**  
 1/2 mi. to N 59-39 W.  
 N side to D. tract. 42.7  
 bearing S 82-25 W. 7.7  
 perpendicular line South. 277.5 A width  
 West Oak Creek 72.0  
 Here, S 31-35 E. 403.0 width  
 distance 618 ft R 87.5 76  
 " + 62. " 133.6 19  
 + 58.9 " 107.5 18  
 + 59.1 " 118.4 18  
 + 60.5 " 194.0 19  
 + 57.0 " 39.5-24

1/2 mi. 225.75

12.75

14.6

27.3



133.0

14.6

27.3

42.02

410.3 = 0.10 A

755.6 = 0.10 A W.C.

14.6 A

91

11.1

12.5

11.1

12.5

11.1

12.5

11.1

12.5

11.1

12.5

11.1

12.5

11.1

12.5

133.0

14.6

27.3

42.02

410.3 = 0.10 A

755.6 = 0.10 A W.C.

14.6 A

91

11.1

12.5

11.1

12.5

11.1

12.5

11.1

12.5

11.1

12.5

11.1

12.5

11.1

12.5

133.0

14.6

27.3

42.02

410.3 = 0.10 A

755.6 = 0.10 A W.C.

14.6 A

91

11.1

12.5

11.1

12.5

11.1

12.5

11.1

12.5

11.1

12.5

11.1

12.5

11.1

12.5

133.0

14.6

27.3

42.02

410.3 = 0.10 A

755.6 = 0.10 A W.C.

14.6 A

91

11.1

12.5

11.1

12.5

11.1

12.5

11.1

12.5

11.1

12.5

11.1

12.5

11.1

12.5

133.0

14.6

27.3

42.02

410.3 = 0.10 A

755.6 = 0.10 A W.C.

14.6 A

91

11.1

12.5

11.1

12.5

11.1

12.5

11.1

12.5

11.1

12.5

11.1

12.5

11.1

12.5

133.0

14.6

27.3

42.02

410.3 = 0.10 A

755.6 = 0.10 A W.C.

14.6 A

91

11.1

12.5

11.1

12.5

11.1

12.5

11.1

12.5

11.1

12.5

11.1

12.5

11.1

12.5



+ 43.8  
 13-38  
 Sat + 52.0  
 + 19.6  
 + 17.7  
 Time  
 705.1  
 6 hrs  
 Plat 501 Rec / 26

From N.W. 303 Hedge  
 From S.E. 303 Hedge  
 N.W.  
 N.S.E. - 11 E  
 " " - 2-30  
 " " - 112.8  
 " + 23.7 = 16.103  
 4-40  
 Time 1/2 @ 500  
 Paid

8-00  
 3.19  
 4.87  
 4.50  
 9.37  
 8.00  
 1.38  
 9.38  
 4.81  
 4.56  
 9.37  
 1.50  
 5.16  
 5.66

28.0 18.0  
 205.3 h.u.c.  
 9.0 25  
 23.3 cur 16  
 27.0 18  
 705.1 h.u.c.

#104  
 30  
 297.5 = 450  
 446.7  
 500  
 11.079  
 456  
 11.537  
 3.092  
 466.6  
 30.0  
 360  
 330  
 5.533 Sand  
 2.1072 Sand  
 3.1461 Sand

10.44  
 10.219  
 226  
 8.00  
 2.719  
 10.219  
 226

17.0950  
 1.0190  
 1.0610  
 24.0150  
 3.55170  
 481170  
 739800  
 23.69

4.507  
 297.5  
 324  
 333  
 3350  
 108216.3  
 482  
 226  
 164  
 200  
 117.60  
 1944  
 1737

446.7  
 499.5  
 12.7  
 23.7  
 7082.6  
 498.2  
 140.9  
 639.1  
 574  
 451  
 3450  
 52.20  
 2.14  
 3.115  
 5.105  
 8.105  
 9.68  
 11.65  
 31.53  
 5.71  
 44  
 11.079  
 456  
 11.537  
 3.092  
 466.6  
 30.0  
 360  
 330

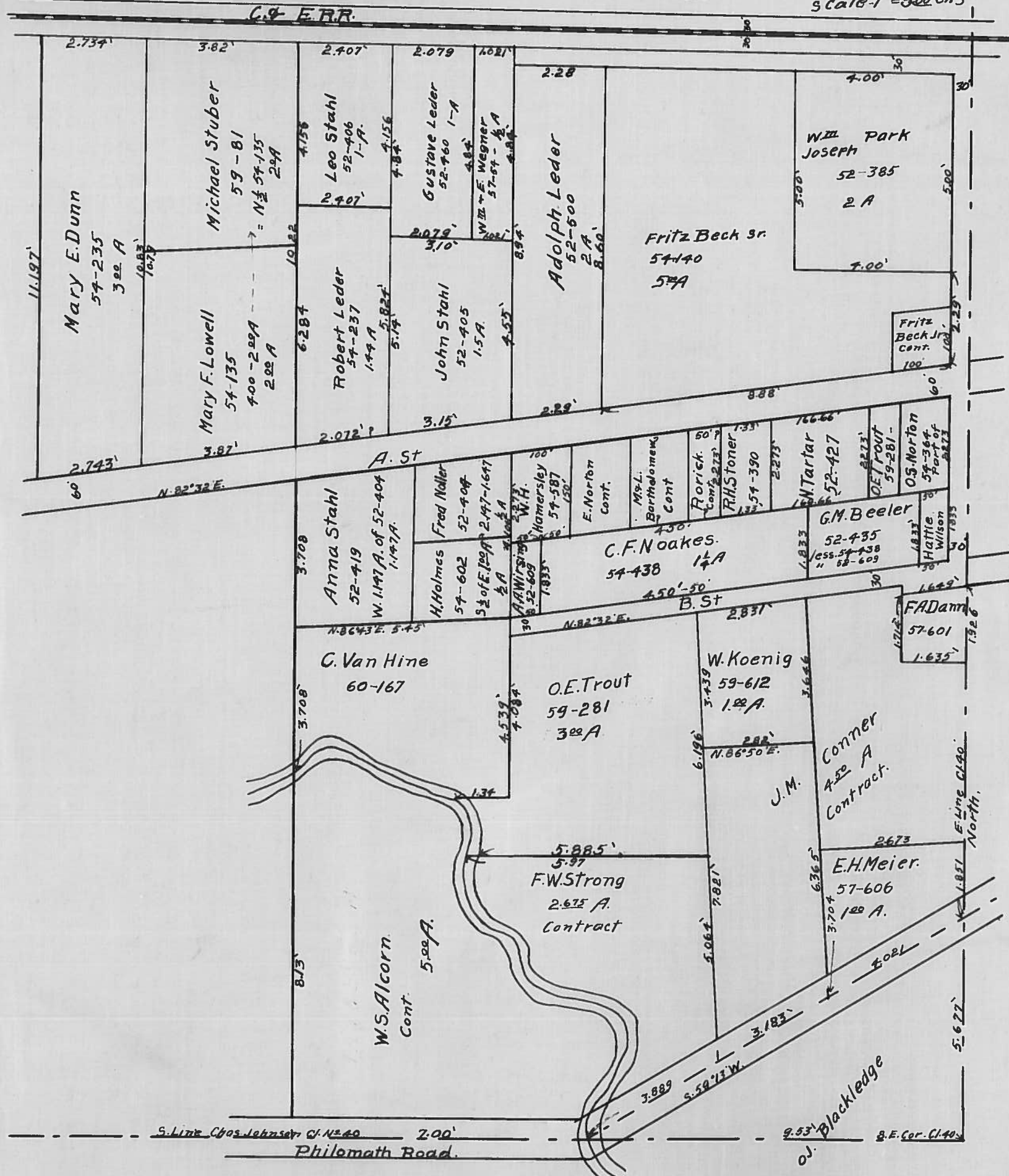
10.44  
 10.219  
 226  
 8.00  
 2.719  
 10.219  
 226

C5103

# RICE TRACTS

Chas. Johnson Cl. No. 40, T.12S, R.5W.

Scale - 1" = 300 Chs



Mary E. Dunn  
54-235  
3.02 A

Michael Stuber  
59-81  
N 1/2 54-135  
2.9 A

Leo Stahl  
52-406  
1-A  
2.407'

Gustave Leder  
52-460  
1-A  
2.079'

Adolph Leder  
52-500  
2 A  
8.60'

Fritz Beck Sr.  
54-140  
5.9 A

W.M. Park Joseph  
52-385  
2 A

Mary F. Lowell  
54-135  
4.00 - 2.00 A  
2.02 A

Robert Leder  
54-237  
1.49 A  
5.82 A

John Stahl  
52-405  
1.5 A

A. St

Anna Stahl  
52-419  
W. 1/2 of E. 1/2 of 52-404  
1.147 A

Fred Noller  
52-404  
2.47 - 1.647  
1/2 A

H. Holmes  
54-602  
1/2 of E. 1/2 of 52-404  
1/2 A

C.F. Noakes  
54-438  
1.4 A

G.M. Beeler  
52-435  
less 54-438  
" 52-609

C. Van Hine  
60-167

O.E. Trout  
59-281  
3.02 A

W. Koenig  
59-612  
1.02 A

W.S. Alcorn  
Cont.  
5.00 A

F.W. Strong  
2.675 A  
Contract

J.M. Conner  
4.50 A  
Contract

E.H. Meier  
57-606  
1.00 A

S. Line Chas. Johnson Cl. No. 40  
Philomath Road

Blackledge

S.E. Cor. Cl. 40



# RICE TRACTS

103

Chas. Johnson C. No. 40, T. 12S, R. 5W.

scale - 1" = 300 Chs

