

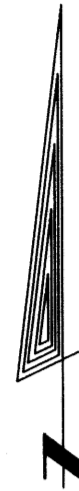
PROPERTY LINE ADJUSTMENT FOR
BRIAN & DARLA WEEKLY

IN THE SOUTHEAST 1/4 OF SECTION 30,
 TOWNSHIP 10 SOUTH, RANGE 4 WEST, W.M.
 BENTON COUNTY, OREGON
 JANUARY 27, 2005

LU-04-083

Benton County
 Surveyor's Office

C.S. FILE NO. 10028
 FILING DATE 6-16-05
 FILE SIZE 18x24

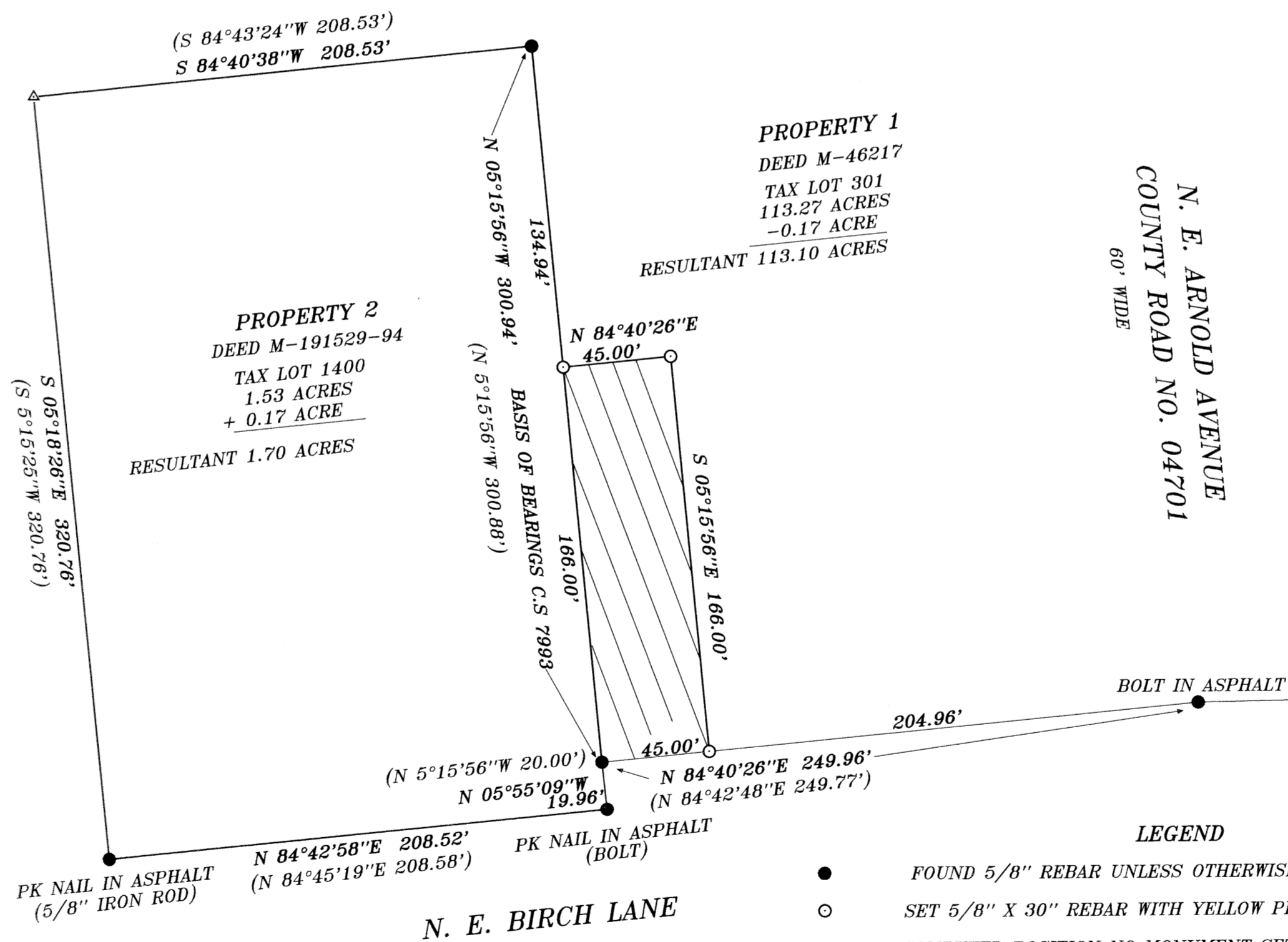


NARRATIVE

Purpose
 The purpose of this property line adjustment is to adjust the line between Tax lot 1400 and Tax Lot 301 as per Benton County Property Line Adjustment File Number LU-04-083

Control
 The control for this Survey is C.S. File No. 7993, Partition Plat 97-37, and deeds M-191529-94 and M-46217

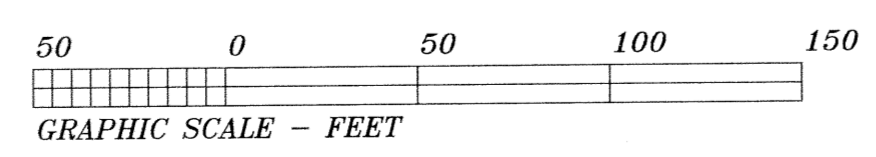
Procedure
 All monuments found were held as control for this project. The monument marking the Northwest corner was not recovered, the location falls under concrete. The computed position was determined using a distance-distance intersect from the monuments found at the Northeast and Southwest corners.



PROPERTY LINE ADJUSTMENT APPROVED
 LU-04-083
 Peter J. Demma
 PLANNING OFFICIAL
 DATE 6-14-05

S.W. CORNER PARCEL 2
 PARTITION PLAT NO. 97-37
 1474.61'
 RED PLASTIC CAP ON
 5/8" REBAR, STAMPED
 "NORTHSTAR PLS 1823"

- LEGEND**
- FOUND 5/8" REBAR UNLESS OTHERWISE NOTED, FOUND C.S. 7993
 - SET 5/8" X 30" REBAR WITH YELLOW PLASTIC CAP STAMPED "PLS 1050"
 - △ COMPUTED POSITION NO MONUMENT SET
 - () RECORD DATA C.S. 7993
 - PROPERTY 1 TO PROPERTY 2



SURVEYED BY:
 L. W. HUNNEMULLER
 3055 N.E. LANCASTER
 CORVALLIS, OR 97330
 PHONE: (541) 757-7614

REGISTERED
 PROFESSIONAL
 LAND SURVEYOR
 OREGON
 AUGUST 22, 1975
 L. W. HUNNEMULLER
 1050
 Renewal Date 6/30/2005