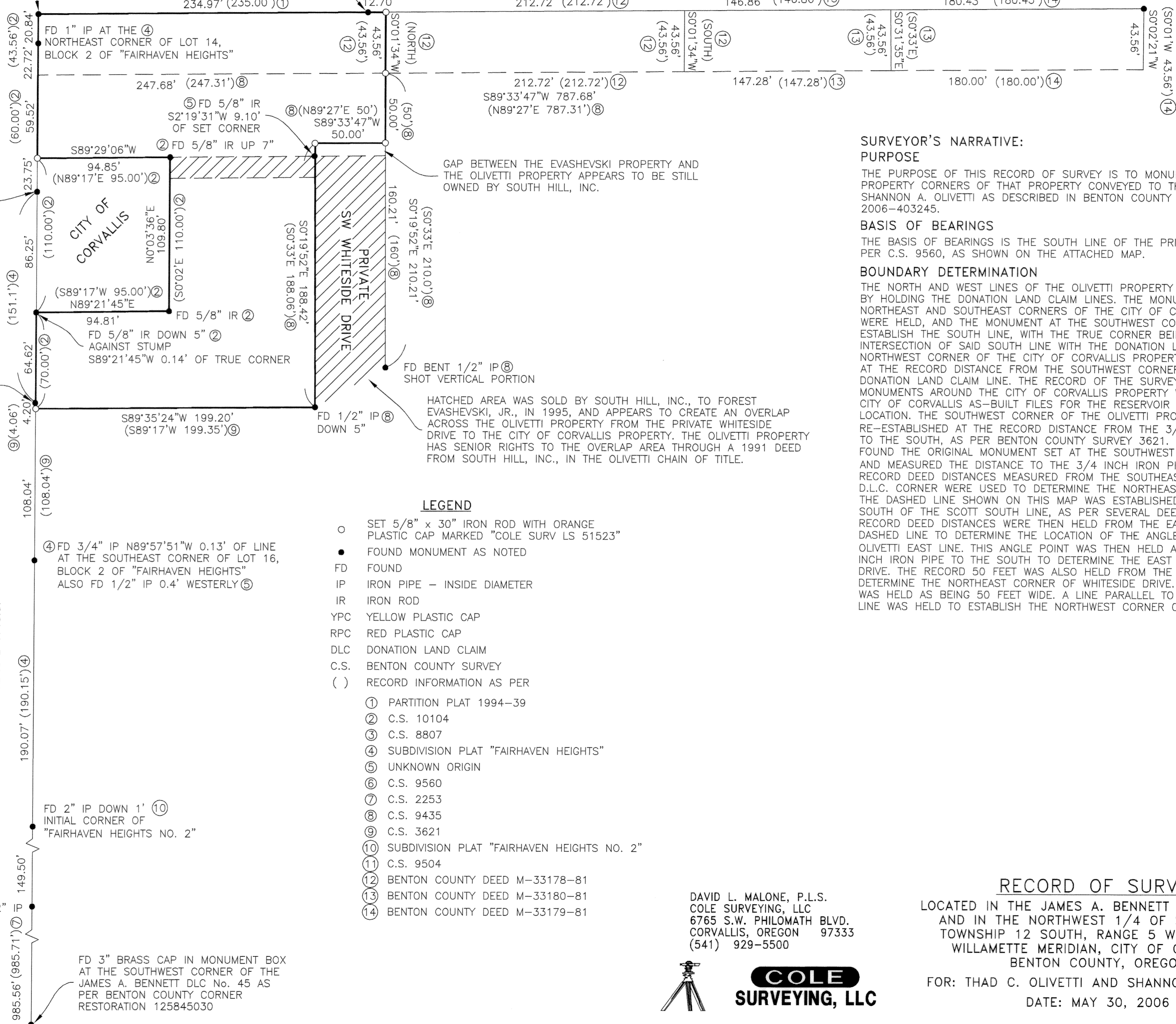


FD 3-1/4" BRASS CAP AT THE SOUTHERLY-SOUTHWEST CORNER OF THE PRIOR SCOTT DLC No. 44 AS PER BENTON COUNTY CORNER RESTORATION 125844030

① FD 5/8" IR WITH RPC MARKED "DW HARMS PLS 1079" AT THE SOUTHEAST CORNER OF PARCEL 8 OF PARTITION PLAT 1994-39

BASIS OF BEARINGS
(S89°33'47"W 787.71')⑥
N89°33'47"E 787.68'

FD 3-1/4" BRASS CAP AT THE SOUTHEAST CORNER OF THE PRIOR SCOTT DLC No. 44 AS PER BENTON COUNTY CORNER RESTORATION 3576



SURVEYOR'S NARRATIVE:
PURPOSE

THE PURPOSE OF THIS RECORD OF SURVEY IS TO MONUMENT THE MISSING PROPERTY CORNERS OF THAT PROPERTY CONVEYED TO THAD C. OLIVETTI AND SHANNON A. OLIVETTI AS DESCRIBED IN BENTON COUNTY RECORDS DOCUMENT 2006-403245.

BASIS OF BEARINGS

THE BASIS OF BEARINGS IS THE SOUTH LINE OF THE PRIOR SCOTT DLC AS PER C.S. 9560, AS SHOWN ON THE ATTACHED MAP.

BOUNDARY DETERMINATION

THE NORTH AND WEST LINES OF THE OLIVETTI PROPERTY WERE DETERMINED BY HOLDING THE DONATION LAND CLAIM LINES. THE MONUMENTS AT THE NORTHEAST AND SOUTHEAST CORNERS OF THE CITY OF CORVALLIS PROPERTY WERE HELD, AND THE MONUMENT AT THE SOUTHWEST CORNER WAS HELD TO ESTABLISH THE SOUTH LINE, WITH THE TRUE CORNER BEING AT THE INTERSECTION OF SAID SOUTH LINE WITH THE DONATION LAND CLAIM LINE. THE NORTHWEST CORNER OF THE CITY OF CORVALLIS PROPERTY WAS ESTABLISHED AT THE RECORD DISTANCE FROM THE SOUTHWEST CORNER ALONG THE DONATION LAND CLAIM LINE. THE RECORD OF THE SURVEY SETTING THE MONUMENTS AROUND THE CITY OF CORVALLIS PROPERTY WAS FOUND IN THE CITY OF CORVALLIS AS-BUILT FILES FOR THE RESERVOIR PROJECT AT THIS LOCATION. THE SOUTHWEST CORNER OF THE OLIVETTI PROPERTY WAS RE-ESTABLISHED AT THE RECORD DISTANCE FROM THE 3/4 INCH IRON PIPE TO THE SOUTH, AS PER BENTON COUNTY SURVEY 3621. C.S. 3621 HAD FOUND THE ORIGINAL MONUMENT SET AT THE SOUTHWEST OLIVETTI CORNER AND MEASURED THE DISTANCE TO THE 3/4 INCH IRON PIPE TO THE SOUTH. RECORD DEED DISTANCES MEASURED FROM THE SOUTHEAST PRIOR SCOTT D.L.C. CORNER WERE USED TO DETERMINE THE NORTHEAST OLIVETTI CORNER. THE DASHED LINE SHOWN ON THIS MAP WAS ESTABLISHED AT 43.56 FEET SOUTH OF THE SCOTT SOUTH LINE, AS PER SEVERAL DEEDS AND SURVEYS. RECORD DEED DISTANCES WERE THEN HELD FROM THE EAST END OF THIS DASHED LINE TO DETERMINE THE LOCATION OF THE ANGLE POINT IN THE OLIVETTI EAST LINE. THIS ANGLE POINT WAS THEN HELD ALONG WITH THE 1/2 INCH IRON PIPE TO THE SOUTH TO DETERMINE THE EAST LINE OF WHITESIDE DRIVE. THE RECORD 50 FEET WAS ALSO HELD FROM THE ANGLE POINT TO DETERMINE THE NORTHEAST CORNER OF WHITESIDE DRIVE. WHITESIDE DRIVE WAS HELD AS BEING 50 FEET WIDE. A LINE PARALLEL TO THE OLIVETTI NORTH LINE WAS HELD TO ESTABLISH THE NORTHWEST CORNER OF WHITESIDE DRIVE.

LEGEND

- SET 5/8" x 30" IRON ROD WITH ORANGE PLASTIC CAP MARKED "COLE SURV LS 51523"
- FOUND MONUMENT AS NOTED
- FD FOUND
- IP IRON PIPE - INSIDE DIAMETER
- IR IRON ROD
- YPC YELLOW PLASTIC CAP
- RPC RED PLASTIC CAP
- DLC DONATION LAND CLAIM
- C.S. BENTON COUNTY SURVEY
- () RECORD INFORMATION AS PER
- ① PARTITION PLAT 1994-39
- ② C.S. 10104
- ③ C.S. 8807
- ④ SUBDIVISION PLAT "FAIRHAVEN HEIGHTS"
- ⑤ UNKNOWN ORIGIN
- ⑥ C.S. 9560
- ⑦ C.S. 2253
- ⑧ C.S. 9435
- ⑨ C.S. 3621
- ⑩ SUBDIVISION PLAT "FAIRHAVEN HEIGHTS NO. 2"
- ⑪ C.S. 9504
- ⑫ BENTON COUNTY DEED M-33178-81
- ⑬ BENTON COUNTY DEED M-33180-81
- ⑭ BENTON COUNTY DEED M-33179-81

DAVID L. MALONE, P.L.S.
COLE SURVEYING, LLC
6765 S.W. PHILOMATH BLVD.
CORVALLIS, OREGON 97333
(541) 929-5500



COLE SURVEYING, LLC

RECORD OF SURVEY

LOCATED IN THE JAMES A. BENNETT D.L.C. No. 45, AND IN THE NORTHWEST 1/4 OF SECTION 10, TOWNSHIP 12 SOUTH, RANGE 5 WEST OF THE WILLAMETTE MERIDIAN, CITY OF CORVALLIS, BENTON COUNTY, OREGON

FOR: THAD C. OLIVETTI AND SHANNON A. OLIVETTI

DATE: MAY 30, 2006

SCALE: 1" = 50'

Benton County Surveyor's Office

C.S. FILE NO. 10107
FILING DATE 6-27-06
FILE SIZE 18x24

REGISTERED PROFESSIONAL LAND SURVEYOR

DAVID L. MALONE
JANUARY 12, 1999
51523

EXPIRES 12/31/2006

6648CS01