

C.S. 1014

SEE NOTES IN FILE

FIELD BOOK 36, PAGE 25

25

1014  
C.S. #206

Re-Survey { For Marvin Coon  
Nov. 21, 1946  
Wet

Came to S.E. Cor. David Butterfield  
Cl. 47 T12-5, offset N. L<sub>5</sub> 1635  
N. 89° 32' W.

1 Set 1/2" pipe

37.820  
+0.002

2 From 1/2" pipe S. of Δ 1

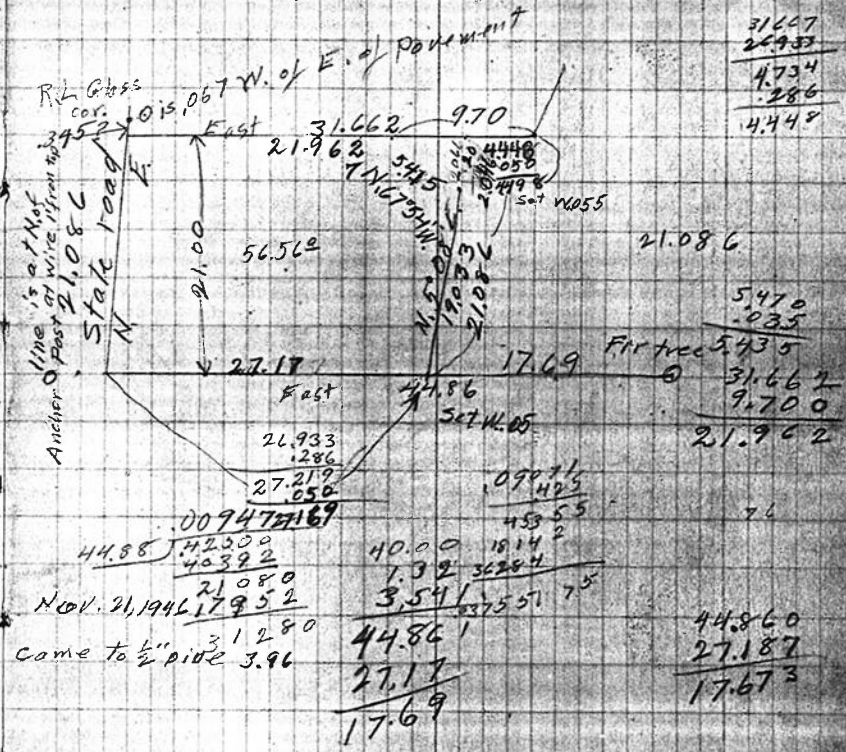
3.079 to 1635 N.  
of 1/2" pipe  
Set by B.W.

3 N. 5° 39' E.  
Set  
N. 89° 32' W.

8.561  
7037

For Marvin Coon  
Nov. 21, 1946

Division For Virgil Avery  
Dec. 8, 1926.



31667  
26933  
4734  
286  
4.448

5470  
-035  
5435  
Fir tree  
31.667  
9.700  
21.962

21.933  
-286  
27.219  
-050  
009477169  
44.88  
42300  
40392  
21080  
Nov. 21, 1946 17952  
31280  
Came to 1/2" pipe 3.96  
44.861  
27.17  
17.69

44.860  
27.187  
17.673

21086  
-345  
21431

37.819  
3.080  
3.960  
44.859