

RECORD OF SURVEY

for

GARY TABOR

on

TRACT 36, ALPINE ORCHARD TRACTS  
SE 1/4 SECTION 23  
T 14 S, R 6 W, W.M.  
BENTON COUNTY, OREGON

NOVEMBER 9, 2005

Benton County  
Surveyor's Office

C.S. FILE NO. 10155

FILING DATE 12-15-06

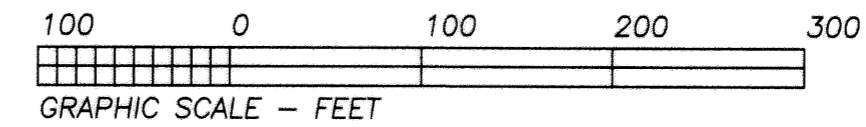
FILE SIZE 18x24

LEGEND

- .....Found Monument as noted.
  - .....Set Monument: N\*MON = 5/8" x 30" rebar with a red plastic cap stamped " NORTHSTAR PLS 1823 "
  - + .....Computed Position, nothing found or set.
- Data of, or computed from, the following:  
( ) ..CS 7075            { } ..CS 7026  
< > ..CS 9323  
[ ] ..Alpine Orchard Tracts

NARRATIVE

The purpose of this survey was to set the corners of my client's property, Tract 36, Alpine Orchard Tracts. Previous Surveys consulted were CS's 6696, 7026, 7075 and 9323. On my survey, CS 7075, I showed the centerline of the 60 foot Larkin Road and the southeast corner of Tract 36 to be 37.41 feet from the 3/4" rod on the west R/W line. I calculated this Tract corner by extending the line through this rod from the rod I tied at the southwest corner of Tract 31, 37.41 feet. I held the rod found per CS 6124A at the northwest corner of Tract 37 and gave Larkin Road its 60 feet for R/W. I then calculate the northeast corner of Tract 36 at 37.41 feet from the west R/W. The west corners of Tract 36 were calculated by proportion as shown.

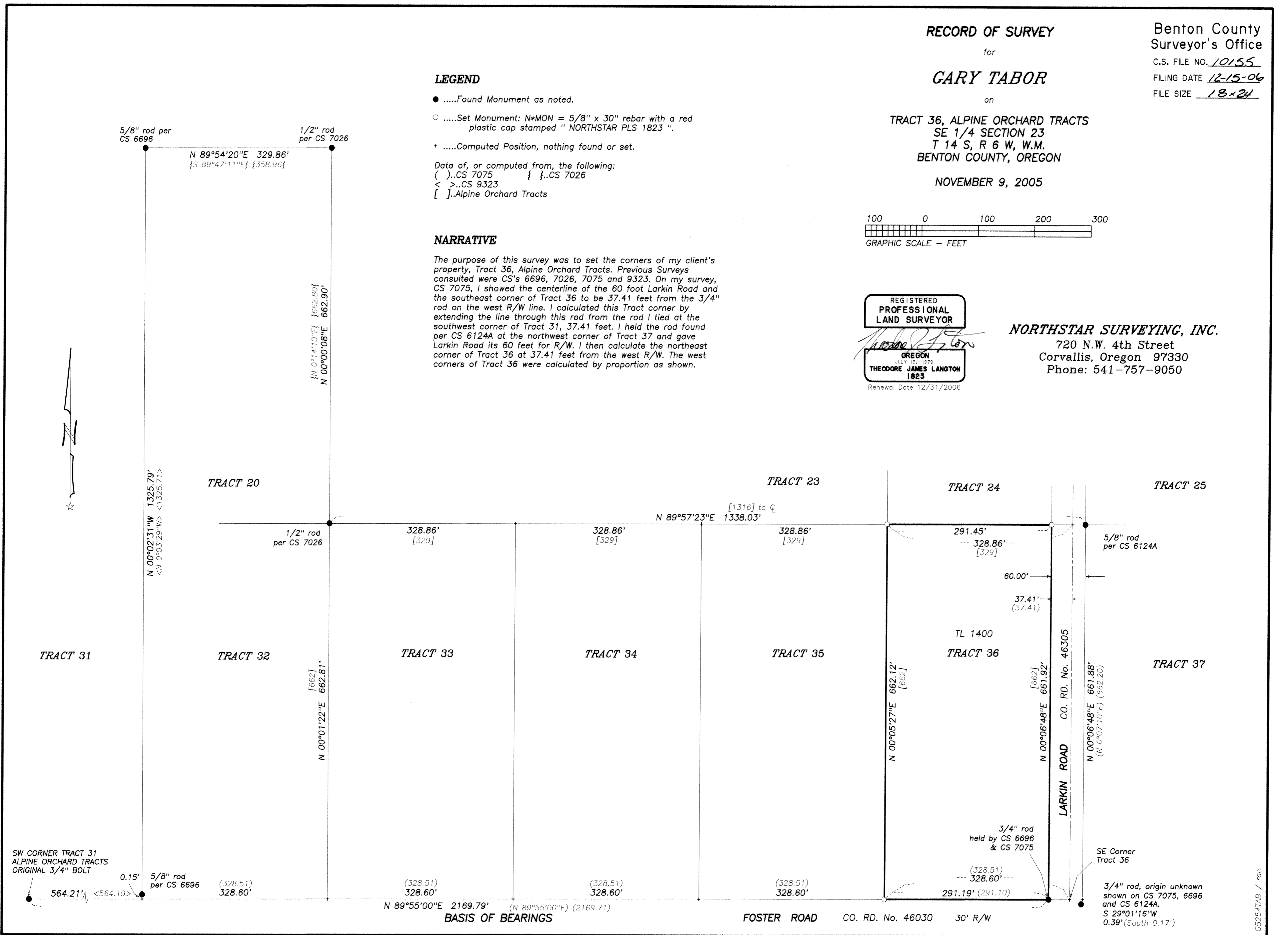


REGISTERED  
PROFESSIONAL  
LAND SURVEYOR

THEODORE JAMES LANGTON  
1823  
RENEWAL DATE 12/31/2006

NORTHSTAR SURVEYING, INC.

720 N.W. 4th Street  
Corvallis, Oregon 97330  
Phone: 541-757-9050



05254TAB / rac